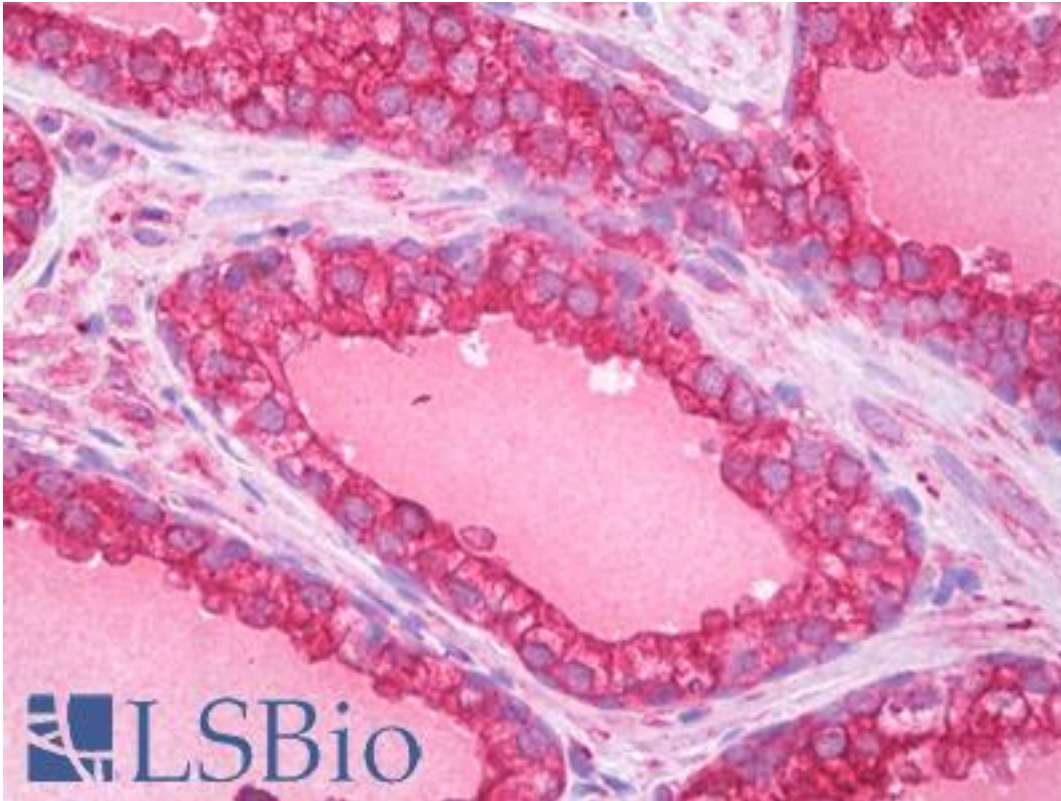


APG5 / ATG5 Mouse anti-Human Monoclonal (aa8-318) Antibody - LS-B7518 - LSBio

CatalogID:	LS-B7518
Validation:	This antibody replaces catalog number LS-C125095. It has been validated for use in the following assays: IHC-P.
Target:	autophagy related 5 (ATG5)
Synonyms:	ATG5 Antibody, APG5 Antibody, APG5-LIKE Antibody, APG5L Antibody, Apoptosis specific protein Antibody, Apoptosis-specific protein Antibody, Autophagy related 5 Antibody, HAPG5 Antibody, ASP Antibody, Autophagy protein 5 Antibody
Host	ATG5 antibody was produced in Mouse
Clonality:	Monoclonal
Isotype:	IgG2b,k
Immunogen Species:	APG5 / ATG5 antibody was raised against Human
Immunogen:	APG5 / ATG5 antibody was raised against peptide corresponding to aa218-318 of human
Specificity:	Recognizes the 50kD human ATG5 protein.
Epitope:	aa8-318
Reactivity:	Human
Purification:	Protein G purified
Presentation:	0.1 M Tris-glycine, pH 7.4, 150 mM sodium chloride, 0.05% sodium azide
Recommended Storage:	Short term 4°C, long term aliquot and store at -20°C, avoid freeze thaw cycles.
Usage Summary:	Suitable for use in Western Blot and Immunoprecipitation. Western Blot: 0.5 ug/ml.
Uses:	IHC - Paraffin (10 µg/ml), Western blot (0.5 µg/ml), Immunoprecipitation (Optimal dilution to be determined by the researcher)
Size:	50 µg
Concentration:	1 mg/ml

Immunohistochemistry Image:



Anti-ATG5 antibody IHC of human prostate. Immunohistochemistry of formalin-fixed, paraffin-embedded tissue after heat-induced antigen retrieval. Antibody LS-B7518 concentration 10 ug/ml.

Requested From:

Japan

Laboratory Reagent For In Vitro Research Use Only

Not for resale without prior written consent from LifeSpan BioSciences, Inc.

Created on 9/24/2014

© 2014 LifeSpan BioSciences