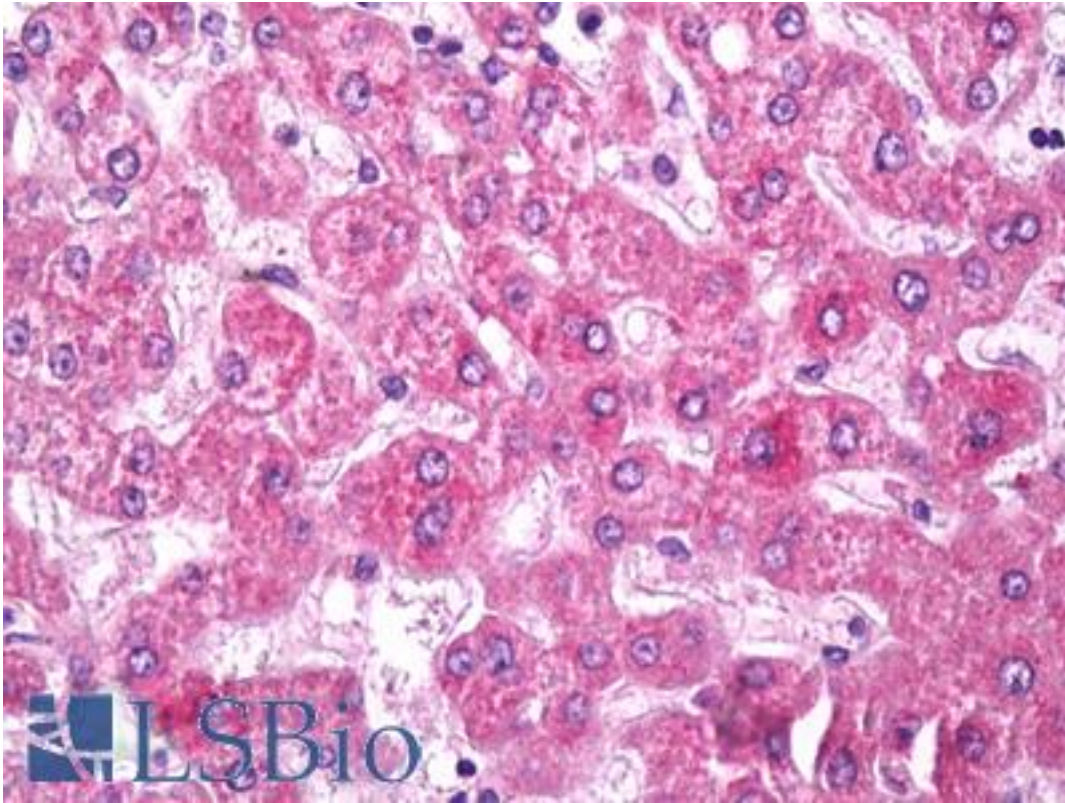


PLXNB1 / Plexin-B1 Rabbit anti-Human Polyclonal Antibody - LS-B7516 - LSBio	
CatalogID:	LS-B7516
Validation:	This antibody replaces catalog number LS-C136872. It has been validated for use in the following assays: IHC-P.
Target:	plexin B1 (PLXNB1)
Synonyms:	PLXNB1 Antibody, KIAA0407 Antibody, Plexin 5 Antibody, Plexin B1 Antibody, Semaphorin receptor SEP Antibody, PLXN5 Antibody, SEP Antibody, Plexin-B1 Antibody
Host	PLXNB1 antibody was produced in Rabbit
Clonality:	Polyclonal
Isotype:	IgG
Immunogen Species:	PLXNB1 / Plexin-B1 antibody was raised against Human
Antigen Type:	Synthetic peptide
Immunogen:	PLXNB1 / Plexin-B1 antibody was raised against synthetic peptide
Specificity:	Plexin B1 antibody detects endogenous levels of Plexin B1 protein. Not tested with other proteins.
Reactivity:	Human, Mouse
Purification:	Protein A purified
Presentation:	PBS, pH 7.4, 0.05% sodium azide
Recommended Storage:	Short term 4°C, long term aliquot and store at -20°C, avoid freeze thaw cycles.
Uses:	IHC - Paraffin (5 µg/ml), Western blot (1:200), ELISA (1:10000) (Optimal dilution to be determined by the researcher)
Size:	50 µl
Concentration:	1 mg/ml

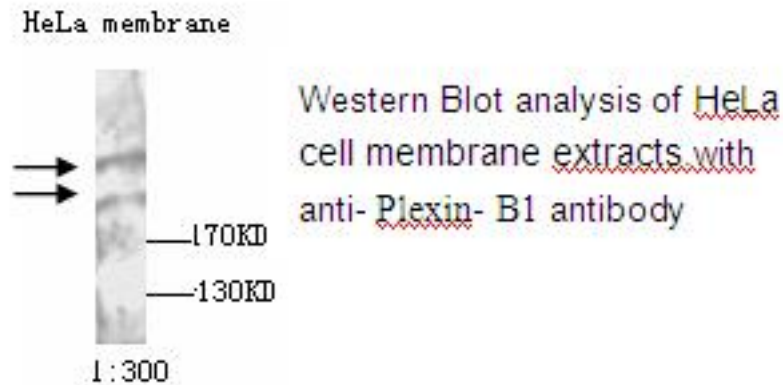
Immunohistochemistry Image:



Anti-PLXNB1 / Plexin B1 antibody IHC of human liver. Immunohistochemistry of formalin-fixed, paraffin-embedded tissue after heat-induced antigen retrieval. Antibody LS-B7516 concentration 5 ug/ml.

Western Blot Image:

This antibody identifies two bands of approximately 200 and 250 kDa in HeLa cell membrane extracts in SDS-PAGE. The above band represents Plexin-B1 precursor and the lower band represents Plexin-B1 cleavage product



Requested From:

Japan

Laboratory Reagent For In Vitro Research Use Only

Not for resale without prior written consent from LifeSpan BioSciences, Inc.

Created on 9/24/2014

© 2014 LifeSpan BioSciences