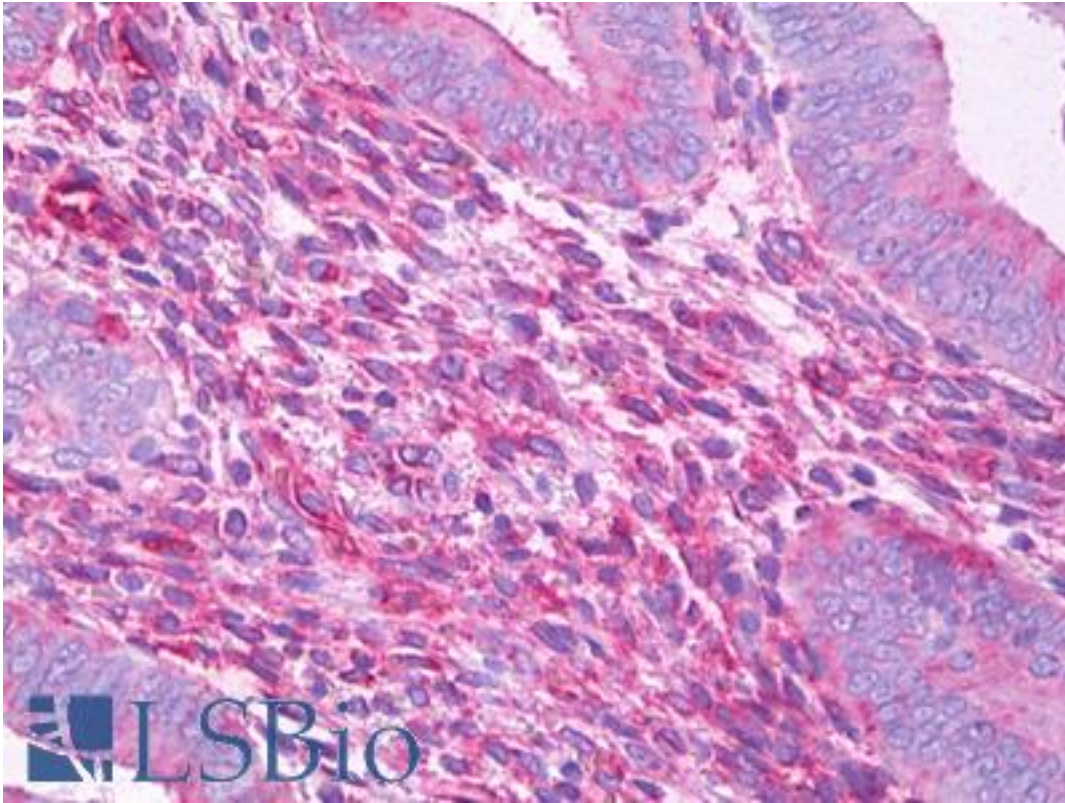


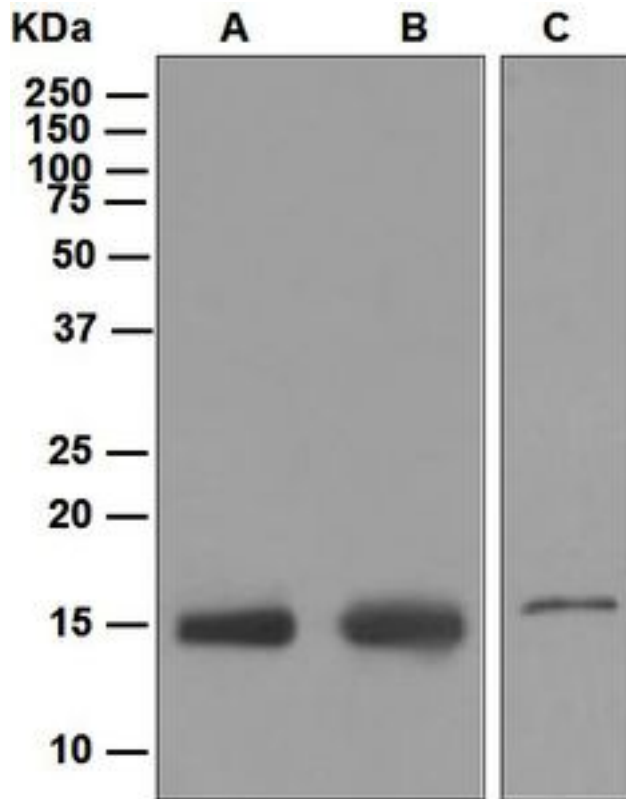
Fragilis / IFITM3 Rabbit anti-Human Monoclonal (Internal) (EPR5242) Antibody - LS-B7510 - LSBio	
<b>CatalogID:</b>	LS-B7510
<b>Validation:</b>	This antibody replaces catalog number LS-C138534. It has been validated for use in the following assays: IHC-P.
<b>Target:</b>	interferon induced transmembrane protein 3 (IFITM3)
<b>Synonyms:</b>	IFITM3 Antibody, 1-8U Antibody, Dispanin subfamily A member 2b Antibody, DSPA2b Antibody, Fragilis Antibody, IP15 Antibody
<b>Host</b>	IFITM3 antibody was produced in Rabbit
<b>Clonality:</b>	Monoclonal
<b>Clone Name:</b>	EPR5242
<b>Immunogen Species:</b>	Fragilis / IFITM3 antibody was raised against Human
<b>Antigen Type:</b>	Synthetic peptide
<b>Immunogen:</b>	Fragilis / IFITM3 antibody was raised against synthetic peptide
<b>Specificity:</b>	Human IFITM3.
<b>Epitope:</b>	Internal
<b>Reactivity:</b>	Human
<b>Purification:</b>	Tissue culture supernatant
<b>Presentation:</b>	Tris-Glycine-NaCl or PBS, pH 7.2-7.4, 40-50% Glycerol, 0.01% sodium azide, 0.05% BSA
<b>Recommended Storage:</b>	Short term 4°C, long term aliquot and store at -20°C, avoid freeze thaw cycles.
<b>Uses:</b>	IHC - Paraffin (1:50), ICC (1:100 - 1:250), Western blot (1:1000 - 1:10000) (Optimal dilution to be determined by the researcher)
<b>Size:</b>	50 µl
<b>Concentration:</b>	0.52 mg/ml

**Immunohistochemistry Image:**



Anti-IFITM3 antibody IHC of human uterus. Immunohistochemistry of formalin-fixed, paraffin-embedded tissue after heat-induced antigen retrieval. Antibody LS-B7510 dilution 1:50.

Western Blot Image:



Western blot analysis on (A) HeLa, (B) 293T, and (C) human placenta lysates using anti-IFITM3 antibody.

Requested From:

Japan

Laboratory Reagent For In Vitro Research Use Only

Not for resale without prior written consent from LifeSpan BioSciences, Inc.

Created on 9/24/2014

© 2014 LifeSpan BioSciences