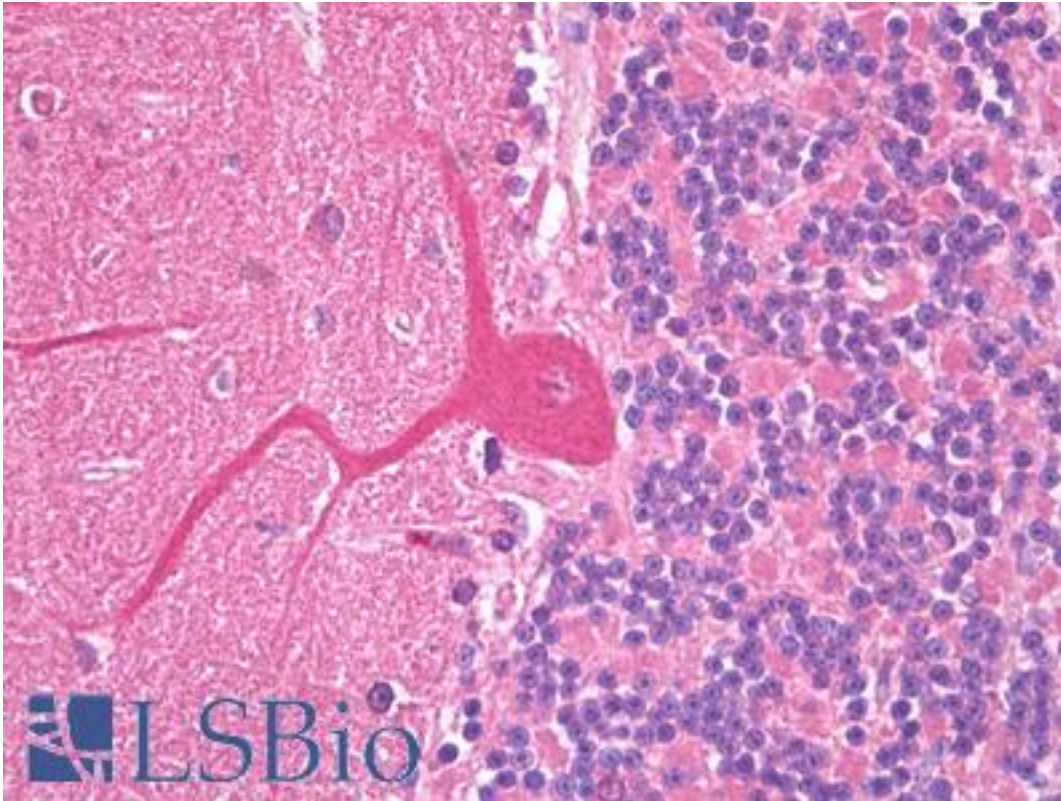


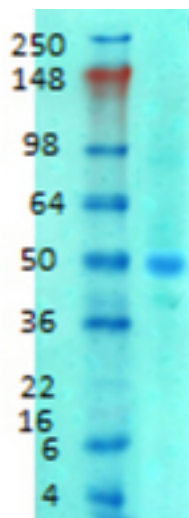
SLC38A1 / NaT2 Mouse Monoclonal (S104-32) Antibody - LS-B7509 - LSBio	
<b>CatalogID:</b>	LS-B7509
<b>Validation:</b>	This antibody replaces catalog number LS-C150475. It has been validated for use in the following assays: IHC-P.
<b>Target:</b>	solute carrier family 38, member 1 (SLC38A1)
<b>Synonyms:</b>	SLC38A1 Antibody, Amino acid transporter A1 Antibody, ATA1 Antibody, MNAT2 Antibody, SNAT1 Antibody
<b>Family / Subfamily:</b>	Transporter / Amino acid transporter
<b>Host</b>	SLC38A1 antibody was produced in Mouse
<b>Clonality:</b>	Monoclonal
<b>Isotype:</b>	IgG1
<b>Clone Name:</b>	S104-32
<b>Antigen Type:</b>	Fusion protein
<b>Immunogen:</b>	SLC38A1 / NaT2 antibody was raised against fusion protein amino acids 1-63 of rat SNAT1
<b>Specificity:</b>	Detects ~50kDa.
<b>Reactivity:</b>	Human, Mouse, Rat
<b>Purification:</b>	Protein G purified
<b>Presentation:</b>	PBS pH7.4, 50% glycerol and 0.09% sodium azide. Sourced in Ascites.
<b>Recommended Storage:</b>	Short term 4°C, long term aliquot and store at -20°C, avoid freeze thaw cycles.
<b>Uses:</b>	IHC - Paraffin (10 µg/ml), ICC, Western blot (Optimal dilution to be determined by the researcher)
<b>Size:</b>	50 µg
<b>Concentration:</b>	1 mg/ml

**Immunohistochemistry Image:**



Anti-SLC38A1 antibody IHC of human brain, cerebellum, Purkinje. Immunohistochemistry of formalin-fixed, paraffin-embedded tissue after heat-induced antigen retrieval. Antibody LS-B7509 concentration 10 ug/ml.

**Western Blot Image:**



Western blot analysis of SNAT1 in rat brain membrane tissues, using a 1:1000 dilution of SLC38A1 / NaT2 antibody.

**Requested From:**

Japan

Laboratory Reagent For In Vitro Research Use Only

Not for resale without prior written consent from LifeSpan BioSciences, Inc.

Created on 9/24/2014

© 2014 LifeSpan BioSciences