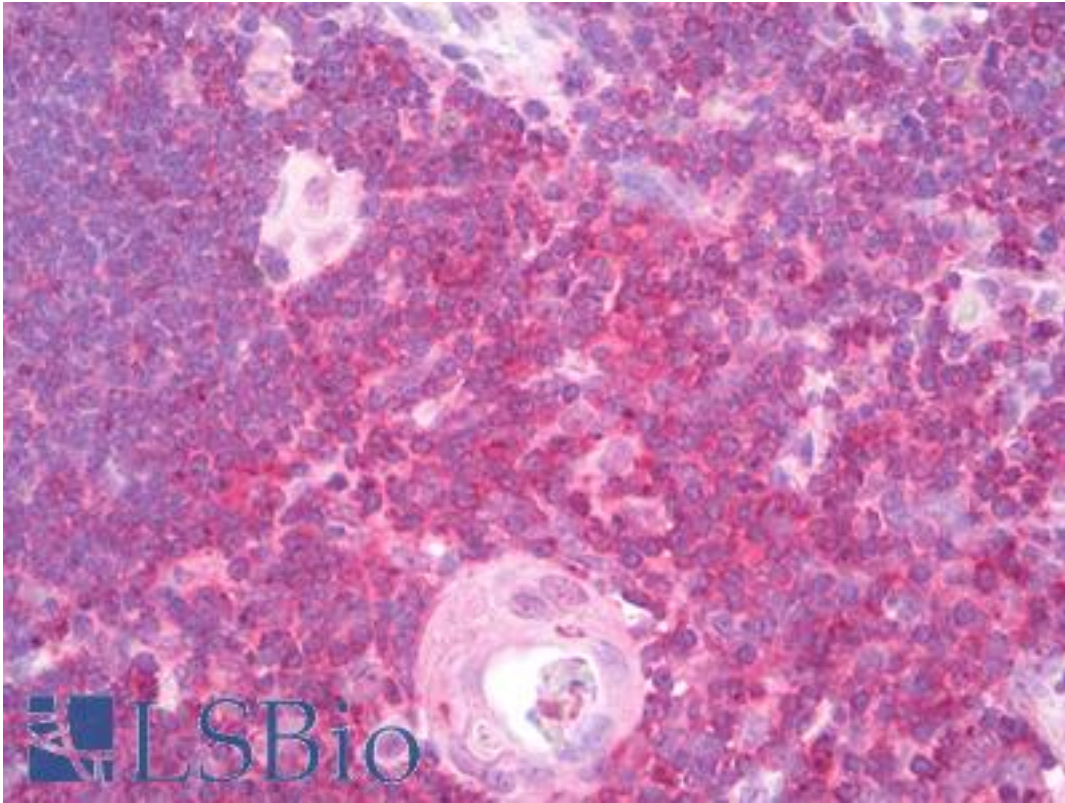


PTPN6 / SHP-1 Goat anti-Human Polyclonal (Internal) Antibody - LS-B7506 - LSBio

<b>CatalogID:</b>	LS-B7506
<b>Validation:</b>	This antibody replaces catalog number LS-C34688. It has been validated for use in the following assays: IHC-P.
<b>Target:</b>	protein tyrosine phosphatase, non-receptor type 6 (PTPN6)
<b>Synonyms:</b>	PTPN6 Antibody, HCP Antibody, HPTP1C Antibody, Hematopoietic cell phosphatase Antibody, PTP-1C Antibody, SH-PTP1 Antibody, SHP-1L Antibody, SHP-1 Antibody, Shptp1 Antibody, HCPH Antibody, PTP1C Antibody, SHP1 Antibody
<b>Family / Subfamily:</b>	Protein Phosphatase / NT2
<b>Host</b>	PTPN6 antibody was produced in Goat
<b>Clonality:</b>	Polyclonal
<b>Immunogen Species:</b>	PTPN6 / SHP-1 antibody was raised against Human
<b>Antigen Type:</b>	Synthetic peptide
<b>Immunogen:</b>	PTPN6 / SHP-1 antibody was raised against synthetic peptide C-KASRTSSKHKEE from an internal region of mouse PTPN6 (NP_536858.1; NP_002822.2). Percent identity by BLAST analysis: Mouse, Rat, Hamster (100%); Human, Gorilla, Monkey, Marmoset, Panda, Dog, Horse, Pig (92%); Elephant, Opossum (83%).
<b>Specificity:</b>	Mouse PTPN6. This antibody is expected to recognise both reported isoforms (NP_536858.1 and NP_002822.2).
<b>Epitope:</b>	Internal
<b>Reactivity:</b>	Human, Mouse, Rat, Hamster
<b>Predicted Reactivity:</b>	Gorilla, Monkey, Dog, Horse, Pig
<b>Purification:</b>	Immunoaffinity purified
<b>Presentation:</b>	Tris-buffered saline, pH 7.3, 0.5% BSA, 0.02% sodium azide
<b>Recommended Storage:</b>	Short term 4°C, long term aliquot and store at -20°C, avoid freeze thaw cycles.
<b>Usage Summary:</b>	Peptide ELISA: antibody detection limit dilution 1:128000. Western blot: Approx 60-70 kDa band observed in Human Bone Marrow and Liver lysates (calculated MW of 67.6 kDa according to NP_536858.1 and NP_002822.2). Recommended concentration: 0.1-0.3 ug/ml. Tested in IHC-P using FFPE human tissues, has not been tested in IHC with mouse samples.
<b>Uses:</b>	IHC - Paraffin (5 µg/ml), Western blot (0.1 - 0.3 µg/ml), ELISA (1:128000) (Optimal dilution to be determined by the researcher)
<b>Size:</b>	50 µg
<b>Concentration:</b>	0.5 mg/ml

**Immunohistochemistry Image:**



Anti-PTPN6 antibody IHC of human thyroid. Immunohistochemistry of formalin-fixed, paraffin-embedded tissue after heat-induced antigen retrieval. Antibody LS-B7506 concentration 5 ug/ml.

**Western Blot Image:**



PTPN6 antibody (0.1 ug/ml) staining of Human Liver lysate (35 ug protein/ml in RIPA buffer). Primary incubation was 1 hour. Detected by chemiluminescence.

**Requested From:**

Japan

Laboratory Reagent For In Vitro Research Use Only

Not for resale without prior written consent from LifeSpan BioSciences, Inc.

Created on 9/24/2014

© 2014 LifeSpan BioSciences