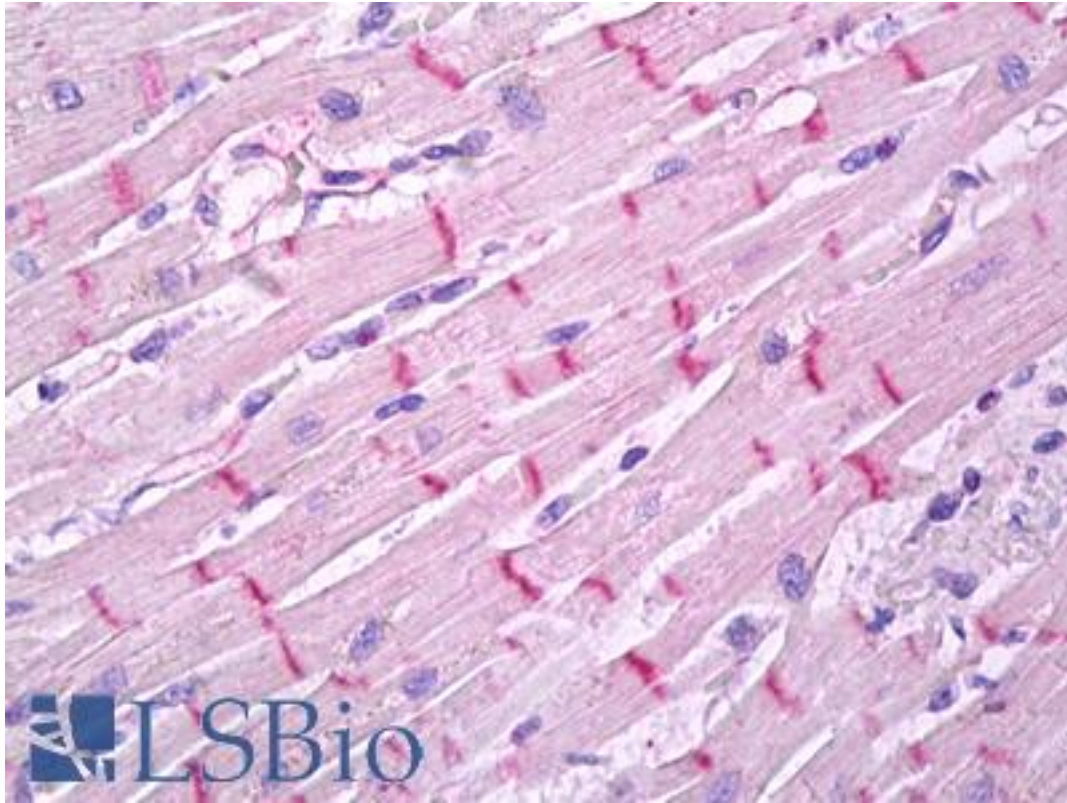


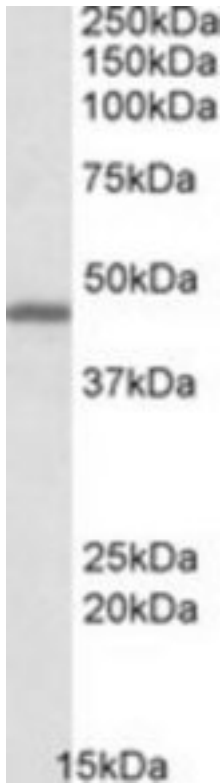
GPR17 Goat anti-Human Polyclonal (C-Terminus) Antibody - LS-B7505 - LSBio	
CatalogID:	LS-B7505
Validation:	This antibody replaces catalog number LS-C112895. It has been validated for use in the following assays: IHC-P.
Target:	G protein-coupled receptor 17 (GPR17)
Synonyms:	GPR17 Antibody, G protein-coupled receptor 17 Antibody, G-protein coupled receptor 17 Antibody, p2Y-like receptor Antibody, Y12546 Antibody, Z94155 Antibody, R12 Antibody, UDP/CysLT receptor Antibody
Family / Subfamily:	GPCR / Orphan-A
Host	GPR17 antibody was produced in Goat
Clonality:	Polyclonal
Immunogen Species:	GPR17 antibody was raised against Human
Antigen Type:	Synthetic peptide
Immunogen:	GPR17 antibody was raised against synthetic peptide C-EGKTNESSLSAKSE from the C-terminus of human GPR17 (NP_005282.1). Percent identity by BLAST analysis: Human, Gorilla, Gibbon, Monkey, Opossum, Turkey, Chicken (100%); Marmoset, Mouse, Rat, Hamster, Elephant, Panda, Rabbit (93%); Horse, Pig, Lizard (86%).
Specificity:	Human GPR17.
Epitope:	C-Terminus
Reactivity:	Human, Gorilla, Gibbon, Chicken
Predicted Reactivity:	Monkey, Mouse, Rat, Hamster, Rabbit
Purification:	Immunoaffinity purified
Presentation:	Tris-buffered saline, pH 7.3, 0.5% BSA, 0.02% sodium azide
Recommended Storage:	Short term 4°C, long term aliquot and store at -20°C, avoid freeze thaw cycles.
Usage Summary:	Peptide ELISA: antibody detection limit dilution 1:1000. Western blot: Approx 45kDa band observed in Human Brain (Cerebellum), and in Mouse Brain and Rat Brain lysates (calculated MW of 41.0kDa according to Human NP_005282.1). Recommended concentration: 0.1-0.3 ug/ml.
Uses:	IHC - Paraffin (10 µg/ml), Western blot (0.1 - 0.3 µg/ml), ELISA (1:1000) (Optimal dilution to be determined by the researcher)
Size:	50 µg
Concentration:	0.5 mg/ml

Immunohistochemistry Image:



Anti-GPR17 antibody IHC of human heart, desmosomes. Immunohistochemistry of formalin-fixed, paraffin-embedded tissue after heat-induced antigen retrieval. Antibody LS-B7505 concentration 10 ug/ml.

Western Blot Image:



GPR17 antibody (0.1 ug/ml) staining of Human Cerebellum lysate (35 ug protein/ml in RIPA buffer). Primary incubation was 1 hour. Detected by chemiluminescence.

Requested From:

Japan

Laboratory Reagent For In Vitro Research Use Only

Not for resale without prior written consent from LifeSpan BioSciences, Inc.

Created on 9/24/2014

© 2014 LifeSpan BioSciences