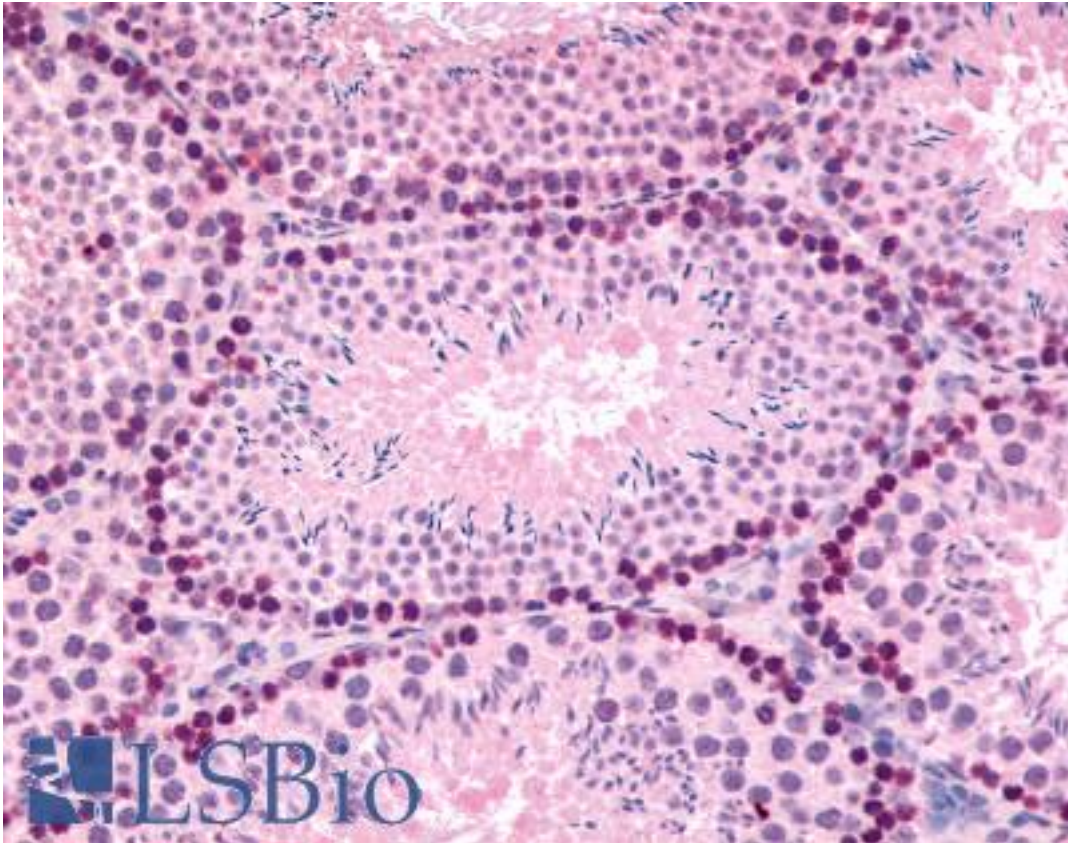


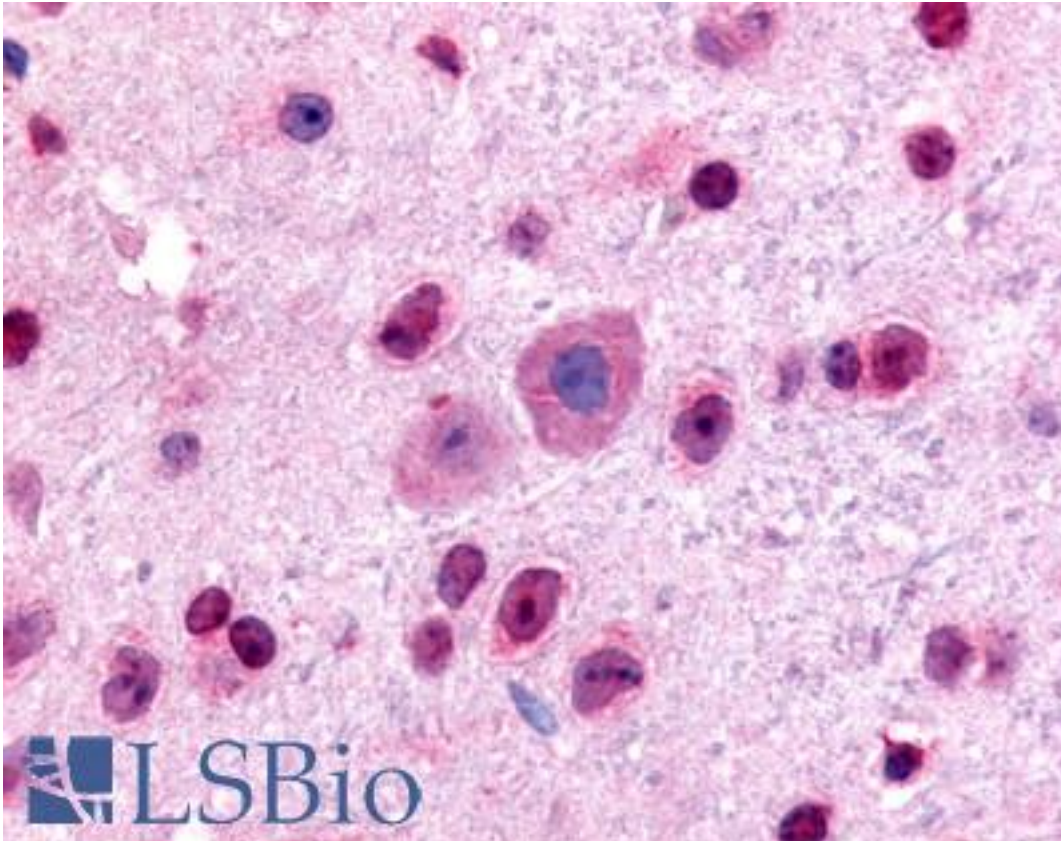
GLI2 Rabbit anti-Mouse Polyclonal (Internal) Antibody - LS-B75 - LSBio	
<b>CatalogID:</b>	LS-B75
<b>Validation:</b>	This antibody replaces catalog number LS-C19039. It has been validated for use in the following assays: IHC.
<b>Target:</b>	GLI family zinc finger 2 (GLI2)
<b>Synonyms:</b>	GLI2 Antibody, GLI-Kruppel family member GLI2 Antibody, HPE9 Antibody, Gli-2 Antibody, Oncogene GLI2 Antibody, Tax helper protein 2 Antibody, THP Antibody, Zinc finger protein GLI2 Antibody, Tax helper protein Antibody, THP2 Antibody, GLI family zinc finger 2 Antibody, Tax helper protein 1 Antibody, THP1 Antibody
<b>Host</b>	GLI2 antibody was produced in Rabbit
<b>Clonality:</b>	Polyclonal
<b>Immunogen Species:</b>	GLI2 antibody was raised against Mouse
<b>Antigen Type:</b>	Synthetic peptide
<b>Immunogen:</b>	GLI2 antibody was raised against synthetic peptide from mouse GLI2.
<b>Specificity:</b>	Amino acids from an internal region of Mouse Gli-2.
<b>Epitope:</b>	Internal
<b>Reactivity:</b>	Mouse
<b>Purification:</b>	Immunoaffinity purified
<b>Presentation:</b>	0.02 M potassium phosphate, 0.15 M sodium chloride, pH 7.2, 0.01% sodium azide.
<b>Recommended Storage:</b>	Long term: -20°C; Short term: +4°C. Avoid repeat freeze-thaw cycles.
<b>Usage Summary:</b>	Immunohistochemistry: LS-B75 was validated for use in immunohistochemistry on a panel of 21 formalin-fixed, paraffin-embedded (FFPE) human tissues after heat induced antigen retrieval in pH 6.0 citrate buffer. After incubation with the primary antibody, slides were incubated with biotinylated secondary antibody, followed by alkaline phosphatase-streptavidin and chromogen. The stained slides were evaluated by a pathologist to confirm staining specificity. The optimal working concentration for LS-B75 was determined to be 5 ug/ml.
<b>Uses:</b>	IHC - Paraffin (5 µg/ml), Western blot (1:500 - 1:2000), ELISA (1:15000 - 1:60000) (Optimal dilution to be determined by the researcher)
<b>Size:</b>	50 µg
<b>Concentration:</b>	1 mg/ml

**Immunohistochemistry Image:**



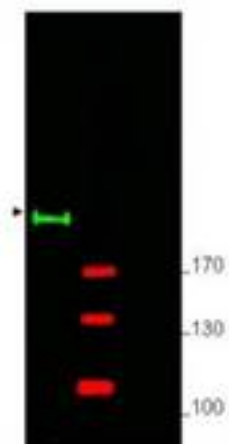
Anti-GLI2 antibody IHC of mouse, testis. Immunohistochemistry of formalin-fixed, paraffin-embedded tissue after heat-induced antigen retrieval. Antibody LS-B75 concentration 5 ug/ml.

**Immunohistochemistry Image:**



Anti-GLI2 antibody IHC of mouse, brain. Immunohistochemistry of formalin-fixed, paraffin-embedded tissue after heat-induced antigen retrieval. Antibody LS-B75 concentration 5 ug/ml.

**Western Blot Image:**



Western analysis of mouse brain whole lysate.

**Requested From:**

Japan

Laboratory Reagent For In Vitro Research Use Only

Not for resale without prior written consent from LifeSpan BioSciences, Inc.

Created on 9/24/2014

© 2014 LifeSpan BioSciences