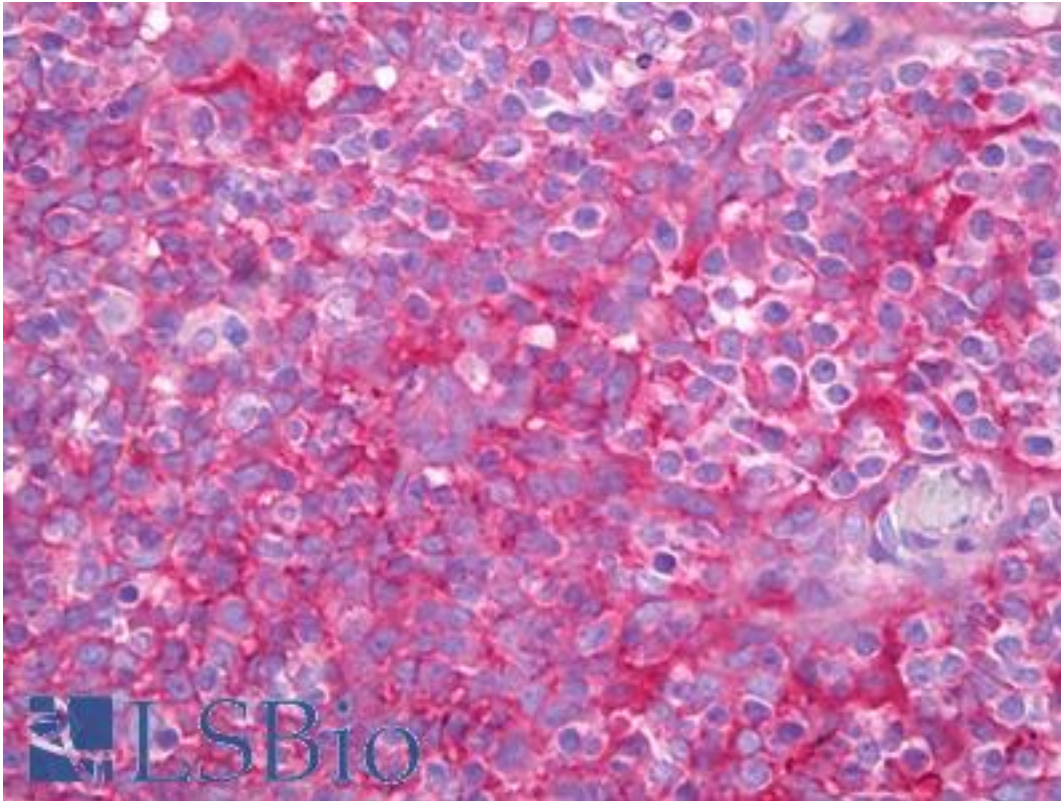


B2M / Beta 2 Microglobulin Mouse anti-Human Polyclonal Antibody - LS-B7493 - LSBio

CatalogID:	LS-B7493
Validation:	This antibody replaces catalog number LS-C150601. It has been validated for use in the following assays: IHC-P.
Target:	beta-2-microglobulin (B2M)
Synonyms:	B2M Antibody, Beta 2 Microglobulin Antibody, Beta-2-microglobulin Antibody, Beta -2-microglobin Antibody
Host	B2M antibody was produced in Mouse
Clonality:	Polyclonal
Isotype:	IgG1
Immunogen Species:	B2M / Beta 2 Microglobulin antibody was raised against Human
Antigen Type:	Purified protein
Immunogen:	B2M / Beta 2 Microglobulin antibody was raised against human beta-2 microglobulin
Specificity:	detects specifically target derived from human recombinant protein as well as Conditioned medium from LNCaP cells of at various concentrations.
Reactivity:	Human
Purification:	Protein G purified
Reconstitution:	Reconstitute in 500 ul of Sterile PBS per tube. Possible additional volumes for resuspension: 200 µl
Presentation:	Lyophilized.
Recommended Storage:	Long term: -20°C; Short term: +4°C; Avoid freeze-thaw cycles.
Uses:	IHC - Paraffin (10 µg/ml), IHC - Frozen, Western blot (1:1000 - 1:2000), ELISA (1:1000000) (Optimal dilution to be determined by the researcher)
Size:	200 µg

Immunohistochemistry Image:



Anti-B2M antibody IHC of human tonsil. Immunohistochemistry of formalin-fixed, paraffin-embedded tissue after heat-induced antigen retrieval. Antibody LS-B7493 concentration 10 ug/ml.

Requested From:

Japan

Laboratory Reagent For In Vitro Research Use Only

Not for resale without prior written consent from LifeSpan BioSciences, Inc.

Created on 9/24/2014

© 2014 LifeSpan BioSciences