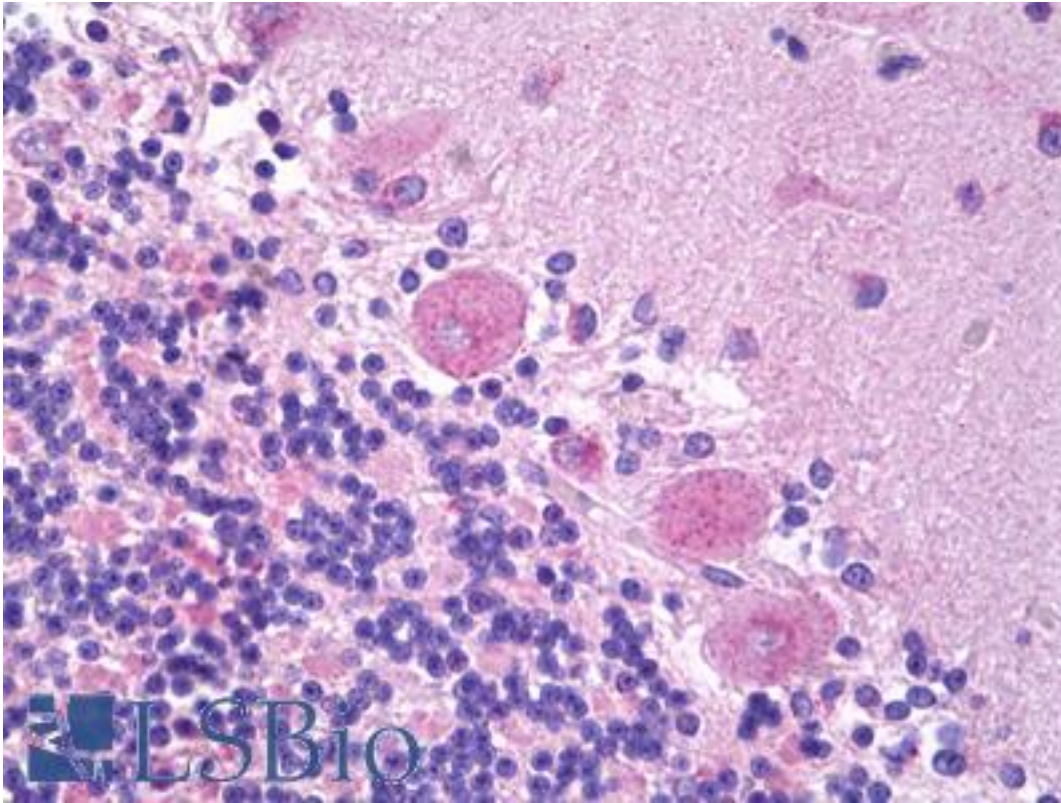


**Brain Natriuretic Peptide 32 Rabbit anti-Human Polyclonal Antibody - LS-B7491 - LSBio**

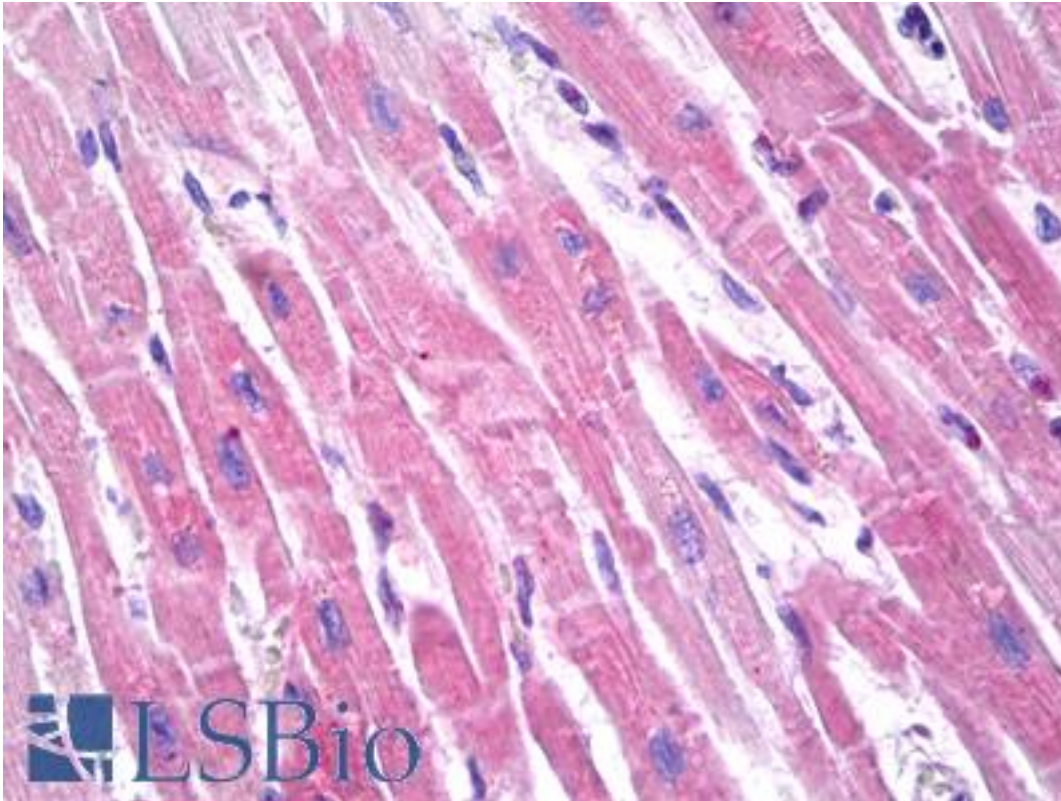
<b>CatalogID:</b>	LS-B7491
<b>Validation:</b>	This antibody replaces catalog number LS-C149255. It has been validated for use in the following assays: IHC-P.
<b>Target:</b>	Brain Natriuretic Peptide 32
<b>Host</b>	Rabbit
<b>Clonality:</b>	Polyclonal
<b>Isotype:</b>	IgG
<b>Immunogen Species:</b>	Human
<b>Antigen Type:</b>	Synthetic peptide - KLH conjugated
<b>Immunogen:</b>	Synthetic peptide (Human BNP: NH <sub>2</sub> -CSPKMQGSGCFGRKMDRISSSSGLGCKVLRH) conjugated with KLH
<b>Reactivity:</b>	Human
<b>Purification:</b>	Protein G purified
<b>Reconstitution:</b>	Reconstitute at 1 mg/ml in PBS
<b>Presentation:</b>	Lyophilized from PBS. No preservative added
<b>Uses:</b>	IHC - Paraffin (10 µg/ml), ELISA (1:40000), Dot Blot (Optimal dilution to be determined by the researcher)
<b>Size:</b>	200 µg

**Immunohistochemistry Image:**



Anti-Brain Natriuretic Peptide 32 antibody IHC of human brain cerebellum.  
Immunohistochemistry of formalin-fixed, paraffin-embedded tissue after heat-induced antigen retrieval. Antibody LS-B7491 concentration 10 ug/ml.

**Immunohistochemistry Image:**



Anti-Brain Natriuretic Peptide 32 antibody IHC of human heart. Immunohistochemistry of formalin-fixed, paraffin-embedded tissue after heat-induced antigen retrieval. Antibody LS-B7491 concentration 10 ug/ml.

**Requested From:**

Japan

Laboratory Reagent For In Vitro Research Use Only

Not for resale without prior written consent from LifeSpan BioSciences, Inc.

Created on 9/24/2014

© 2014 LifeSpan BioSciences