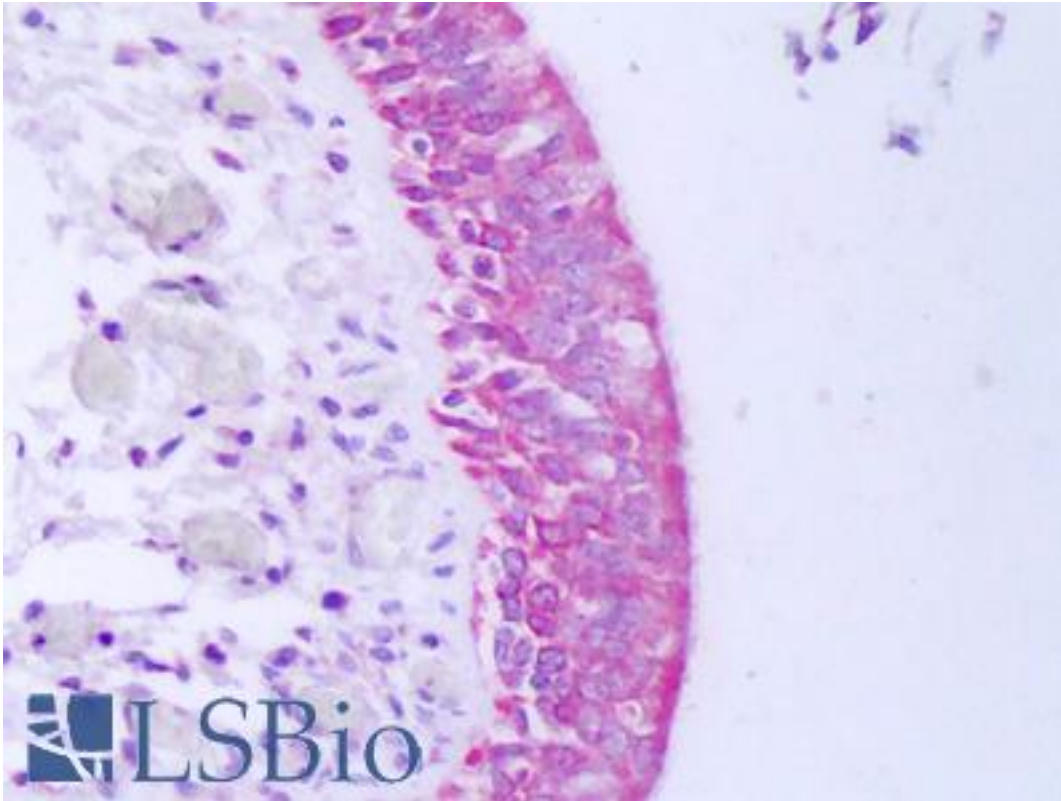


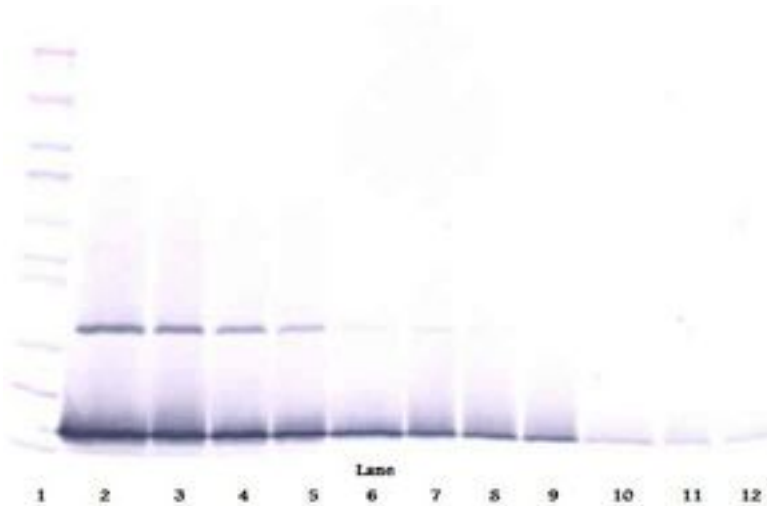
IFN Gamma / Interferon Gamma Rabbit anti-Human Polyclonal Antibody - LS-B7487 - LSBio	
CatalogID:	LS-B7487
Validation:	This antibody replaces catalog number LS-C104380. It has been validated for use in the following assays: IHC-P.
Target:	interferon, gamma (IFNG)
Synonyms:	IFNG Antibody, IFG Antibody, Immune interferon Antibody, IFI Antibody, Interferon gamma Antibody, IFN-gamma Antibody, Interferon, gamma Antibody
Family / Subfamily:	Interferon / not assigned-Interferon
Host	IFNG antibody was produced in Rabbit
Clonality:	Polyclonal
Isotype:	IgG
Immunogen Species:	IFN Gamma / Interferon Gamma antibody was raised against Human
Antigen Type:	Cell extract
Immunogen:	IFN Gamma / Interferon Gamma antibody was raised against e.coli derived recombinant Human IFN-gamma.
Specificity:	Human IFN-gamma
Reactivity:	Human
Purification:	Immunoaffinity purified
Reconstitution:	Sterile water. Possible additional volumes for resuspension: 50 µl
Presentation:	Lyophilized from PBS, pH 7.2
Recommended Storage:	Store Lyophilized at room temperature up to 1 month; Reconstituted for up to two weeks at 2-8°C. Aliquot and freeze at -20°C for long term storage. Avoid freeze/thaw cycles.
Usage Summary:	Immunohistochemistry: LS-B7487 in an IHC-plus antibody, validated by our pathologists for use in IHC against formalin-fixed, paraffin-embedded human tissues (IHC validation procedure). A concentration of 5 ug/ml is recommended. Neutralization: To yield one-half maximal inhibition [ND] of the biological activity of Human IFN-gamma (10 ng/ml), a concentration of 0.13-0.20 ug/ml of this antibody is required. ELISA: To detect Human IFN-gamma by sandwich ELISA (using 100 ul/well antibody solution) a concentration of 0.5-2 ug/ml of this antibody is required. This antigen affinity purified antibody, in conjunction with Biotinylated Anti-Human IFN-gamma (LS-C104708) as a detection antibody, allows the detection of at least 0.2-0.4 ng/well of recombinant Human IFN-gamma. Western Blot: To detect Human IFN-gamma by Western Blot analysis this antibody can be used at a concentration of 0.1-0.2 ug/ml. When used in conjunction with compatible secondary reagents, the detection limit for recombinant Human IFN-gamma is 1.5-3 ng/lane, under either reducing or non-reducing conditions.
Uses:	IHC - Paraffin (5 µg/ml), Western blot, ELISA (0.5 - 2 µg/ml), Neutralization (Optimal dilution to be determined by the researcher)
Size:	50 µg
Concentration:	1 mg/ml (after resuspension)

Immunohistochemistry Image:



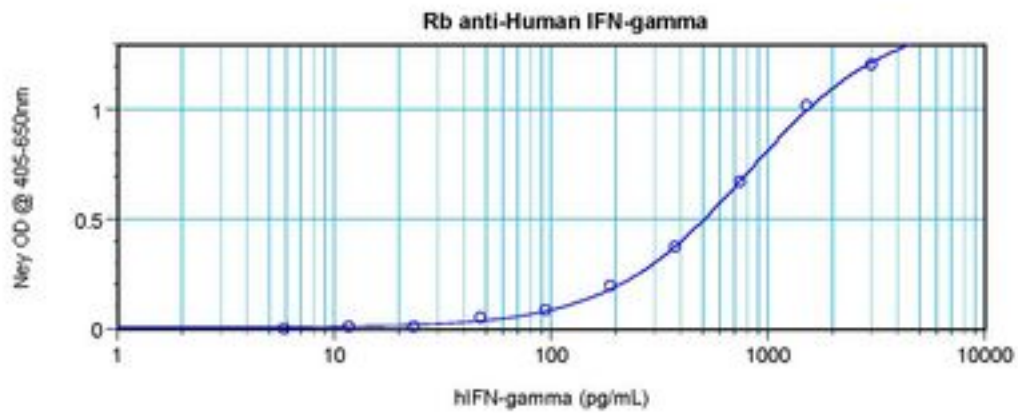
Anti-Interferon Gamma antibody IHC of human lung, respiratory epithelium. Immunohistochemistry of formalin-fixed, paraffin-embedded tissue after heat-induced antigen retrieval. Antibody LS-B7487 concentration 5 ug/ml.

Western Blot Image:



Western Blot (non-reducing) of IFN-Gamma / Interferon Gamma antibody LS-B7487

ELISA Image:



Sandwich ELISA of IFN-Gamma / Interferon Gamma antibody LS-B7487

Requested From:

Japan

Laboratory Reagent For In Vitro Research Use Only

Not for resale without prior written consent from LifeSpan BioSciences, Inc.

Created on 9/24/2014

© 2014 LifeSpan BioSciences