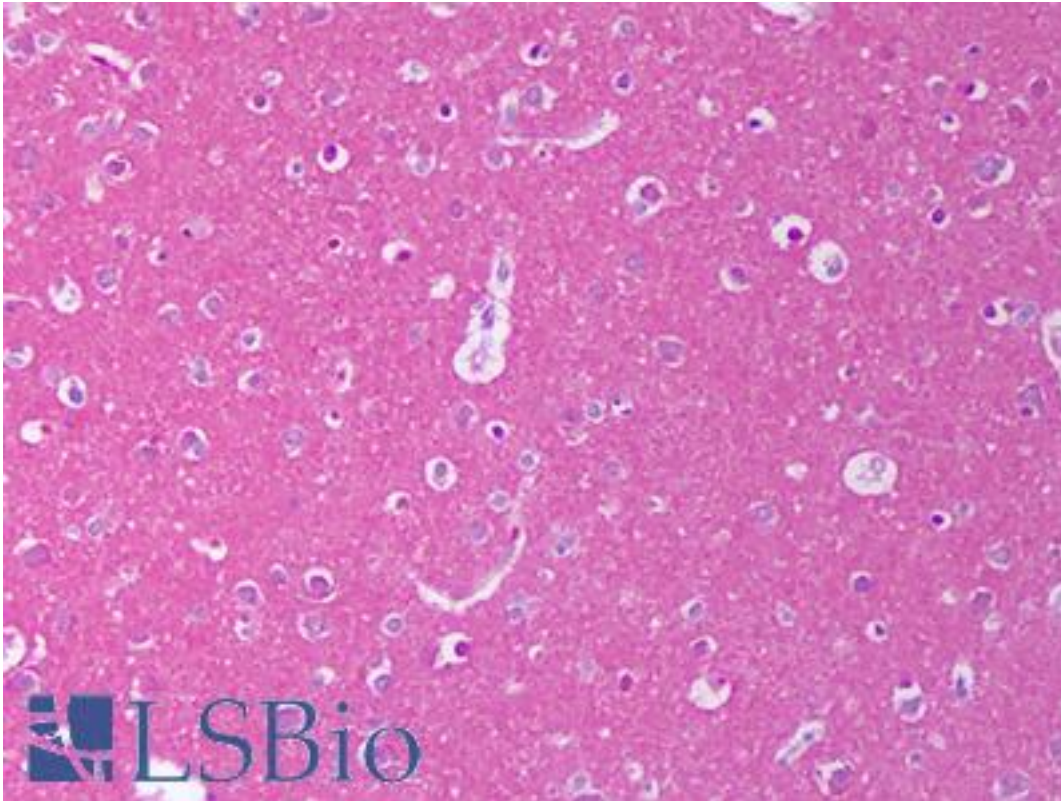


NRG1 / Heregulin / Neuregulin Rabbit anti-Human Polyclonal Antibody - LS-B7486 - LSBio	
CatalogID:	LS-B7486
Validation:	This antibody replaces catalog number LS-C104715. It has been validated for use in the following assays: IHC-P.
Target:	neuregulin 1 (NRG1)
Synonyms:	NRG1 Antibody, ARIA Antibody, GGF Antibody, GGF2 Antibody, Glial growth factor Antibody, Heregulin Antibody, HRGA Antibody, MSTP131 Antibody, NDF Antibody, Neu differentiation factor Antibody, Neuregulin 1 type IV beta 3 Antibody, Neuregulin 1 type IV beta 1a Antibody, HRG1 Antibody, NRG-1 Antibody, SMDF Antibody, Neuregulin 1 Antibody, Pro-NRG1 Antibody, HGL Antibody, MST131 Antibody
Host	NRG1 antibody was produced in Rabbit
Clonality:	Polyclonal
Isotype:	IgG
Immunogen Species:	NRG1 / Heregulin / Neuregulin antibody was raised against Human
Antigen Type:	Cell extract
Immunogen:	NRG1 / Heregulin / Neuregulin antibody was raised against e.coli derived recombinant Human Heregulin-beta1.
Specificity:	Human Heregulin-beta1
Reactivity:	Human
Purification:	Immunoaffinity purified
Reconstitution:	Sterile water. Possible additional volumes for resuspension: 50 µl
Presentation:	Lyophilized from PBS, pH 7.2
Recommended Storage:	Store Lyophilized at room temperature up to 1 month; Reconstituted for up to two weeks at 2-8°C. Aliquot and freeze at -20°C for long term storage. Avoid freeze/thaw cycles.
Usage Summary:	<p>Immunohistochemistry: LS-B7486 in an IHC-plus antibody, validated by our pathologists for use in IHC against formalin-fixed, paraffin-embedded human tissues (IHC validation procedure). A concentration of 5 ug/ml is recommended.</p> <p>Neutralization: To yield one-half maximal inhibition [ND] of the biological activity of Human Heregulin-beta1 (1 ng/ml), a concentration of 0.7-1.1 ug/ml of this antibody is required.</p> <p>ELISA: To detect Human Heregulin-beta1 by sandwich ELISA (using 100 ul/well antibody solution) a concentration of 0.5-2 ug/ml of this antibody is required. This antigen affinity purified antibody, in conjunction with Biotinylated Anti-Human Heregulin-beta1(LS-C104552) as a detection antibody, allows the detection of at least 0.2-0.4 ng/well of recombinant Human Heregulin-beta1.</p> <p>Western Blot: To detect Human Heregulin-beta1 by Western Blot analysis this antibody can be used at a concentration of 0.1-0.2 ug/ml. When used in conjunction with compatible secondary reagents, the detection limit for recombinant Human Heregulin-beta1 is 1.5-3 ng/lane, under either reducing or non-reducing conditions.</p>
Uses:	IHC - Paraffin (5 µg/ml), Western blot, ELISA, Neutralization (Optimal dilution to be determined by the researcher)
Size:	50 µg

Concentration:

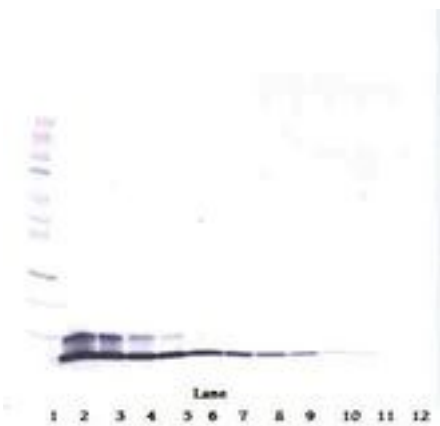
1 mg/ml (after resuspension)

Immunohistochemistry Image:



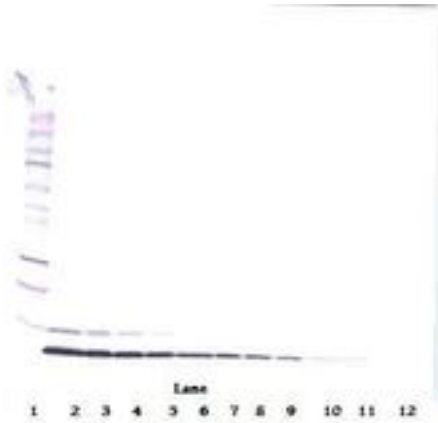
Anti-NGR1 antibody IHC of human brain, cortex. Immunohistochemistry of formalin-fixed, paraffin-embedded tissue after heat-induced antigen retrieval. Antibody LS-B7486 concentration 5 ug/ml.

Western Blot Image:



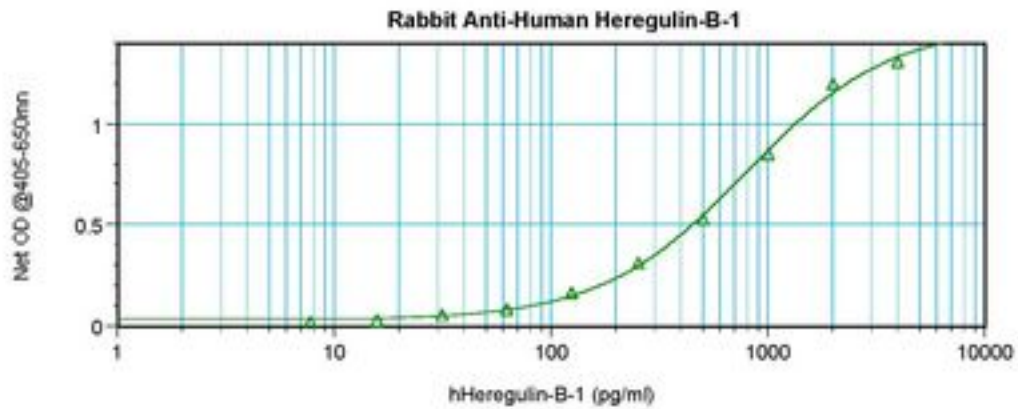
Western Blot (reducing) of Heregulin / NRG1 antibody LS-B7486

Western Blot Image:



Western Blot (non-reducing) of Heregulin / NRG1 antibody LS-B7486

ELISA Image:



Sandwich ELISA of Heregulin / NRG1 antibody LS-B7486

Requested From:

Japan

Laboratory Reagent For In Vitro Research Use Only

Not for resale without prior written consent from LifeSpan BioSciences, Inc.

Created on 9/24/2014

© 2014 LifeSpan BioSciences