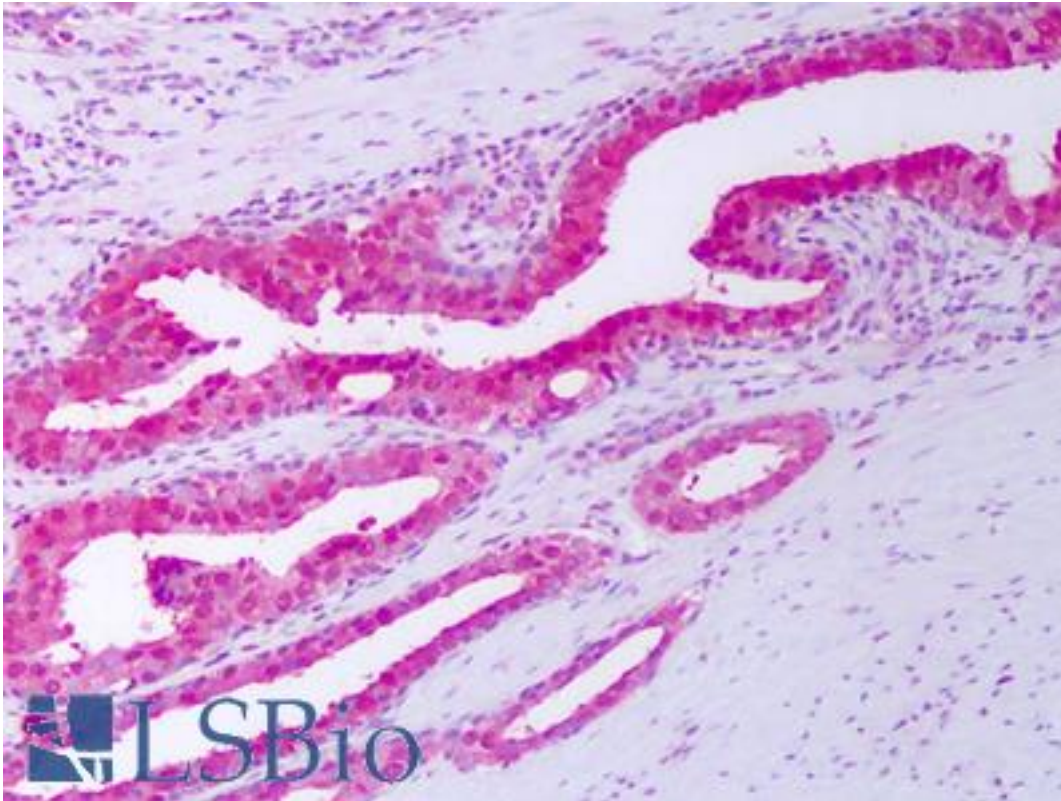


TIMP1 Rabbit anti-Human Polyclonal Antibody - LS-B7485 - LSBio

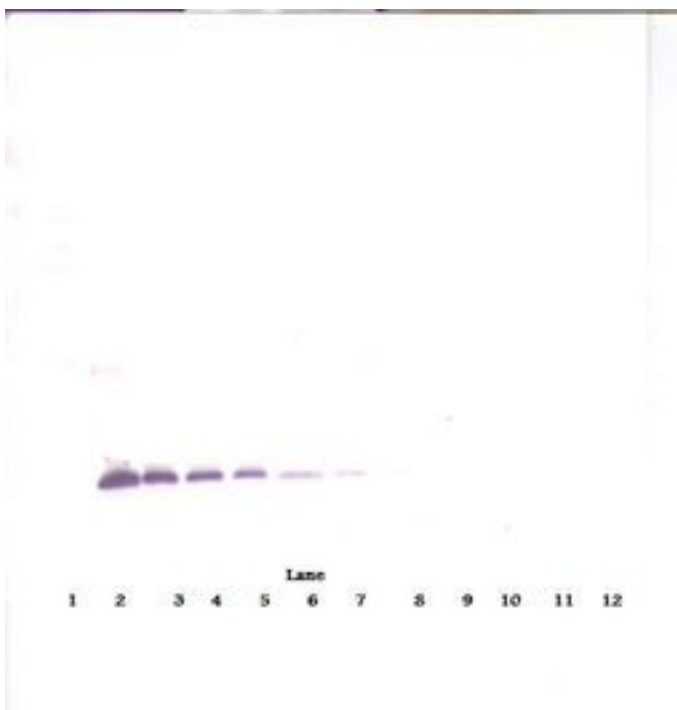
CatalogID:	LS-B7485
Validation:	This antibody replaces catalog number LS-C104830. It has been validated for use in the following assays: IHC-P.
Target:	TIMP metalloproteinase inhibitor 1 (TIMP1)
Synonyms:	TIMP1 Antibody, CLGI Antibody, EPA Antibody, HCI Antibody, Metalloproteinase inhibitor 1 Antibody, TIMP-1 Antibody, Collagenase inhibitor Antibody
Host	TIMP1 antibody was produced in Rabbit
Clonality:	Polyclonal
Isotype:	IgG
Immunogen Species:	TIMP1 antibody was raised against Human
Antigen Type:	Cell extract
Immunogen:	TIMP1 antibody was raised against e.coli derived recombinant Human TIMP-1.
Specificity:	Human TIMP-1
Reactivity:	Human
Purification:	Immunoaffinity purified
Reconstitution:	Sterile water. Possible additional volumes for resuspension: 50 µl
Presentation:	Lyophilized from PBS, pH 7.2
Recommended Storage:	Store Lyophilized at room temperature up to 1 month; Reconstituted for up to two weeks at 2-8°C. Aliquot and freeze at -20°C for long term storage. Avoid freeze/thaw cycles.
Usage Summary:	<p>Immunohistochemistry: LS-B7485 in an IHC-plus antibody, validated by our pathologists for use in IHC against formalin-fixed, paraffin-embedded human tissues (IHC validation procedure). A concentration of 5 ug/ml is recommended.</p> <p>Neutralization: To yield one-half maximal inhibition [ND] of the biological activity of Human TIMP-1 (3 ug/ml), a concentration of 5 ug/ml of this antibody is required.</p> <p>ELISA: To detect hTIMP-1 by sandwich ELISA (using 100 ul/well antibody solution) a concentration of 0.5-2 ug/ml of this antibody is required. This antigen affinity purified antibody, in conjunction with Biotinylated Anti-Human TIMP-1 (LS-C104724) as a detection antibody, allows the detection of at least 0.2-0.4 ng/well of recombinant hTIMP-1. Western Blot: To detect hTIMP-1 by Western Blot analysis this antibody can be used at a concentration of 0.1-0.2 ug/ml. Used in conjunction with compatible secondary reagents the detection limit for recombinant hTIMP-1 is 1.5-3 ng/lane, under either reducing or non-reducing conditions.</p>
Uses:	IHC - Paraffin (5 µg/ml), Western blot (0.1 - 0.2 µg/ml), ELISA (0.5 - 2 µg/ml), Neutralization (5 µg/ml) (Optimal dilution to be determined by the researcher)
Size:	50 µg
Concentration:	1 mg/ml (after resuspension)

Immunohistochemistry Image:



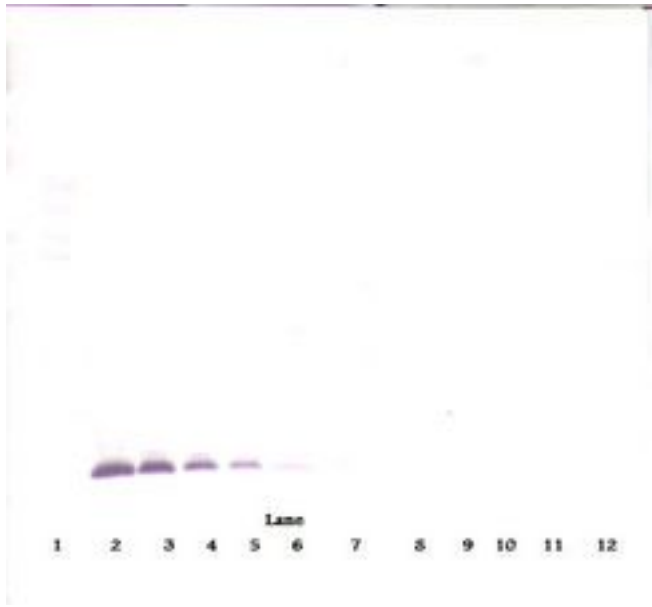
Anti-TIMP1 antibody IHC of human prostate, epithelium. Immunohistochemistry of formalin-fixed, paraffin-embedded tissue after heat-induced antigen retrieval. Antibody LS-B7485 concentration 5 ug/ml.

Western Blot Image:



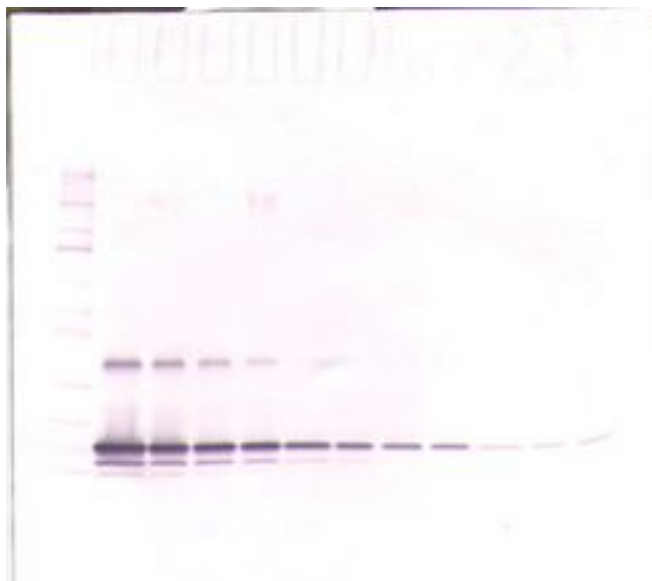
Western Blot (non-reducing) of TIMP-1 antibody LS-B7485

Western Blot Image:



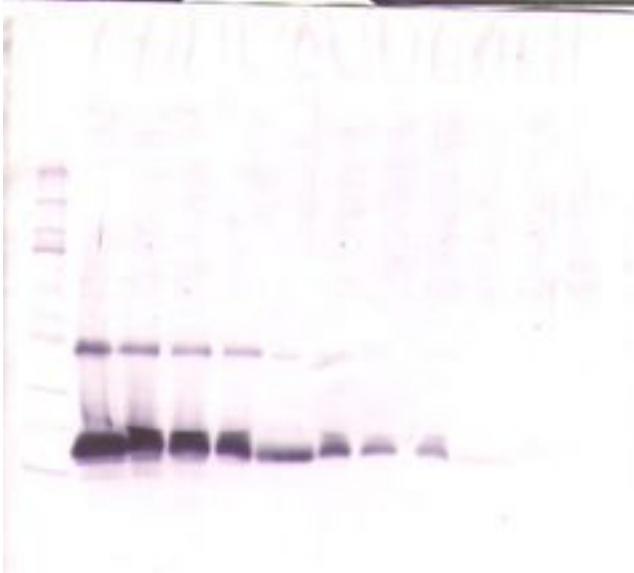
Western Blot (reducing) of TIMP-1 antibody LS-B7485

Western Blot Image:



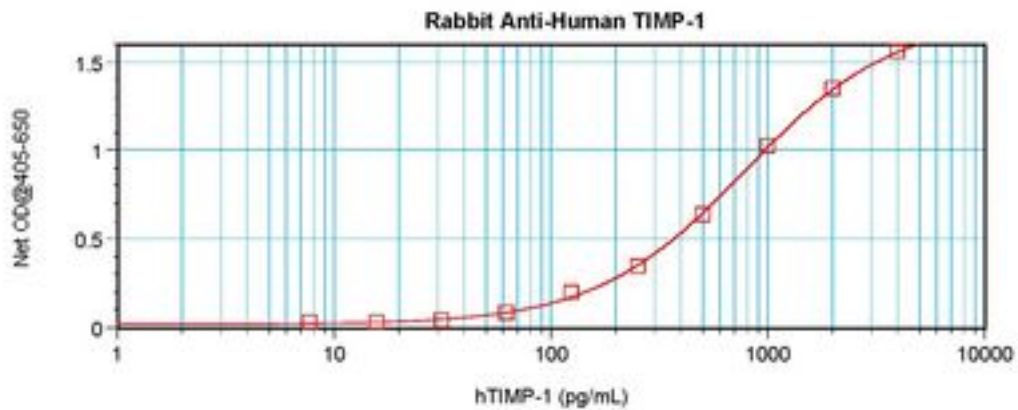
Western Blot (non-reducing) of TIMP-1 antibody LS-B7485

Western Blot Image:



Western Blot (reducing) of TIMP-1 antibody LS-B7485

ELISA Image:



Sandwich ELISA of TIMP-1 antibody LS-B7485

Requested From:

Japan

Laboratory Reagent For In Vitro Research Use Only

Not for resale without prior written consent from LifeSpan BioSciences, Inc.

Created on 9/24/2014

© 2014 LifeSpan BioSciences