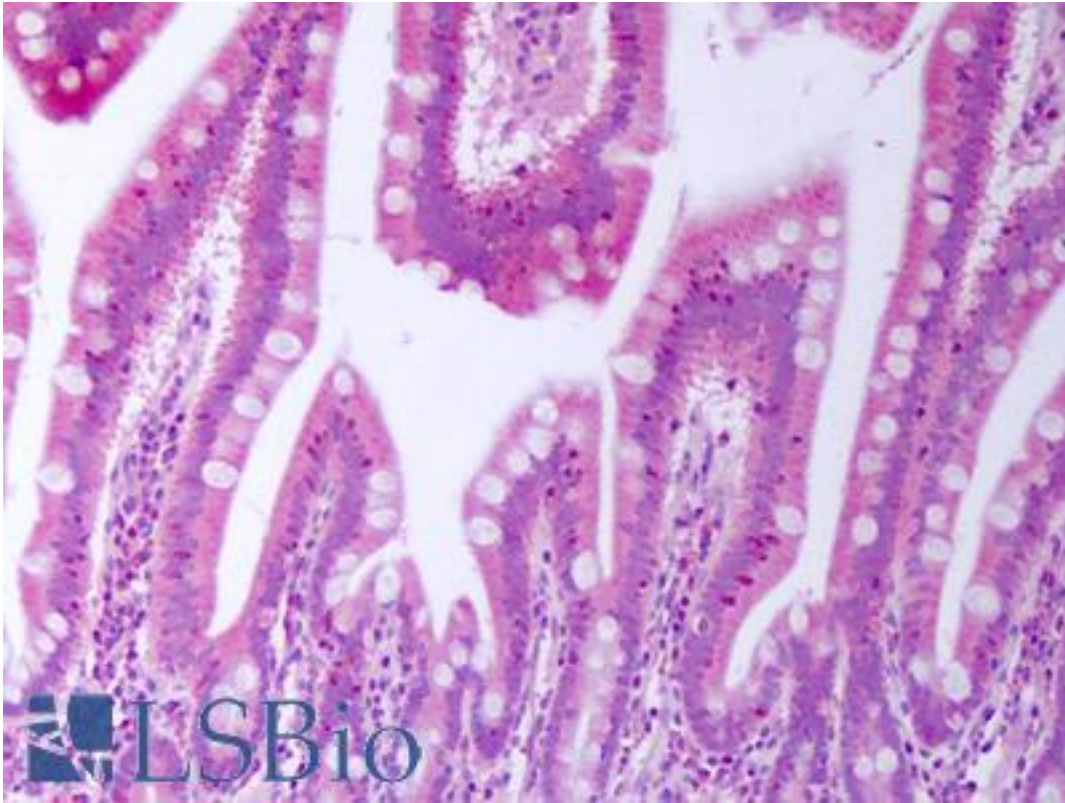


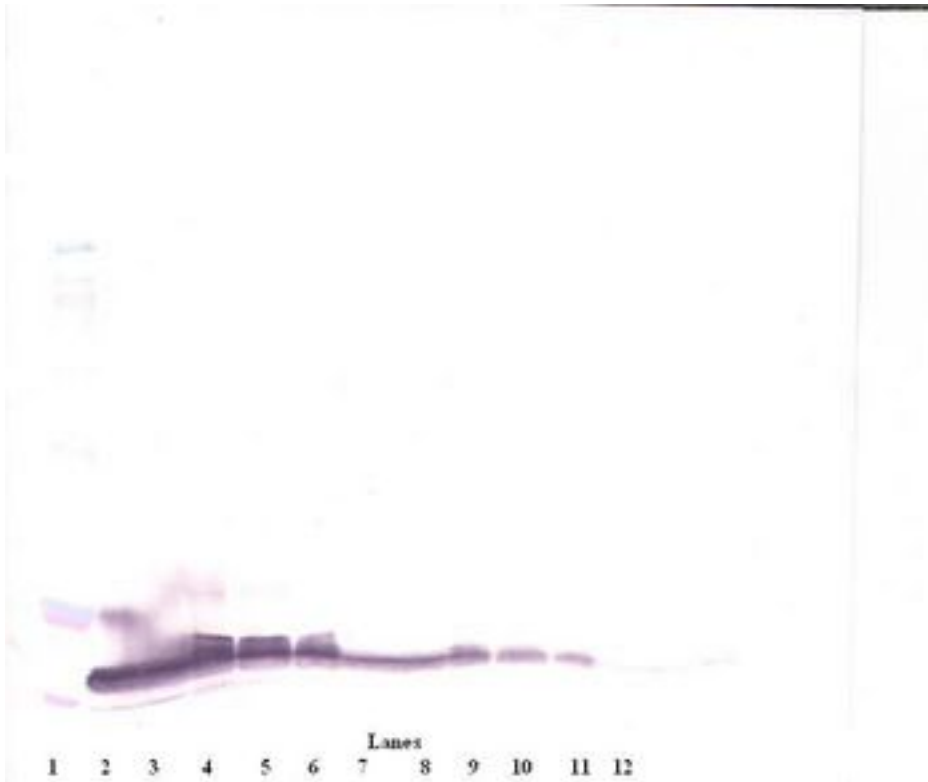
BTC / Betacellulin Rabbit anti-Human Polyclonal Antibody - LS-B7481 - LSBio	
<b>CatalogID:</b>	LS-B7481
<b>Validation:</b>	This antibody replaces catalog number LS-C104297. It has been validated for use in the following assays: IHC-P.
<b>Target:</b>	betacellulin (BTC)
<b>Synonyms:</b>	BTC Antibody, Betacellulin Antibody, Probetacellulin Antibody
<b>Host</b>	BTC antibody was produced in Rabbit
<b>Clonality:</b>	Polyclonal
<b>Isotype:</b>	IgG
<b>Immunogen Species:</b>	BTC / Betacellulin antibody was raised against Human
<b>Antigen Type:</b>	Cell extract
<b>Immunogen:</b>	BTC / Betacellulin antibody was raised against e.coli derived recombinant Human Betacellulin.
<b>Specificity:</b>	Human Betacellulin
<b>Reactivity:</b>	Human
<b>Purification:</b>	Immunoaffinity purified
<b>Reconstitution:</b>	Reconstitute in sterile water
<b>Presentation:</b>	Lyophilized from PBS, pH 7.2
<b>Recommended Storage:</b>	Store Lyophilized at room temperature up to 1 month; Reconstituted for up to two weeks at 2-8°C. Aliquot and freeze at -20°C for long term storage. Avoid freeze/thaw cycles.
<b>Usage Summary:</b>	<p>Immunohistochemistry: LS-B7481 in an IHC-plus antibody, validated by our pathologists for use in IHC against formalin-fixed, paraffin-embedded human tissues (IHC validation procedure). A concentration of 5 ug/ml is recommended.</p> <p>Neutralization: To yield one-half maximal inhibition [ND] of the biological activity of Human Betacellulin (0.1 ng/ml), a concentration of &amp;le. 0.1 ug/ml of this antibody is required.</p> <p>ELISA: To detect hBetacellulin by sandwich ELISA (using 100 ul/well antibody solution) a concentration of 0.5-2 ug/ml of this antibody is required. This antigen affinity purified antibody, in conjunction with Biotinylated Anti-Human Betacellulin (LS-C104290) as a detection antibody, allows the detection of at least 0.2-0.4 ng/well of recombinant hBetacellulin.</p> <p>Western Blot: To detect hBetacellulin by Western Blot analysis this antibody can be used at a concentration of 0.1-0.2 ug/ml. Used in conjunction with compatible secondary reagents the detection limit for recombinant hBetacellulin is 1.5-3 ng/lane, under either reducing or non-reducing conditions.</p>
<b>Uses:</b>	IHC - Paraffin (5 µg/ml), Western blot (0.1 - 0.2 µg/ml), ELISA, Neutralization (0.1 µg/ml) (Optimal dilution to be determined by the researcher)
<b>Size:</b>	50 µg

**Immunohistochemistry Image:**



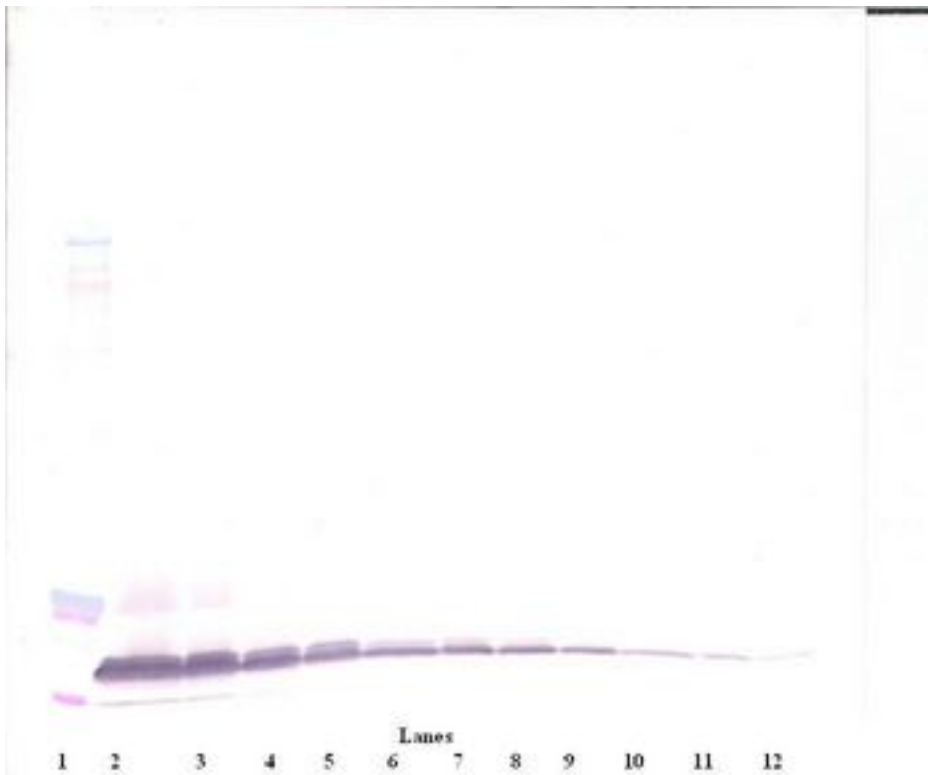
Anti-BTC antibody IHC of human small intestine. Immunohistochemistry of formalin-fixed, paraffin-embedded tissue after heat-induced antigen retrieval. Antibody LS-B7481 concentration 5 ug/ml.

**Western Blot Image:**



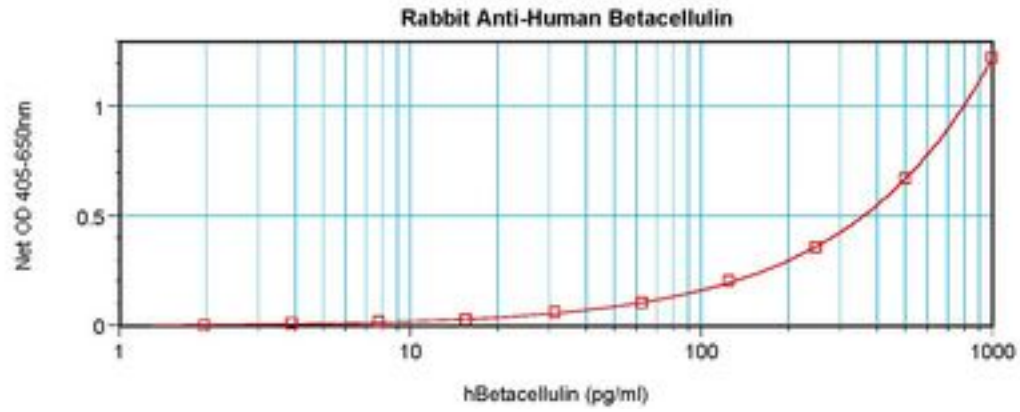
Western Blot (reducing) of Betacellulin antibody LS-B7481

**Western Blot Image:**



Western Blot (non-reducing) of Betacellulin antibody LS-B7481

**ELISA Image:**



Sandwich ELISA of Betacellulin antibody LS-B7481

**Requested From:**

Japan

Laboratory Reagent For In Vitro Research Use Only

Not for resale without prior written consent from LifeSpan BioSciences, Inc.

Created on 9/24/2014

© 2014 LifeSpan BioSciences