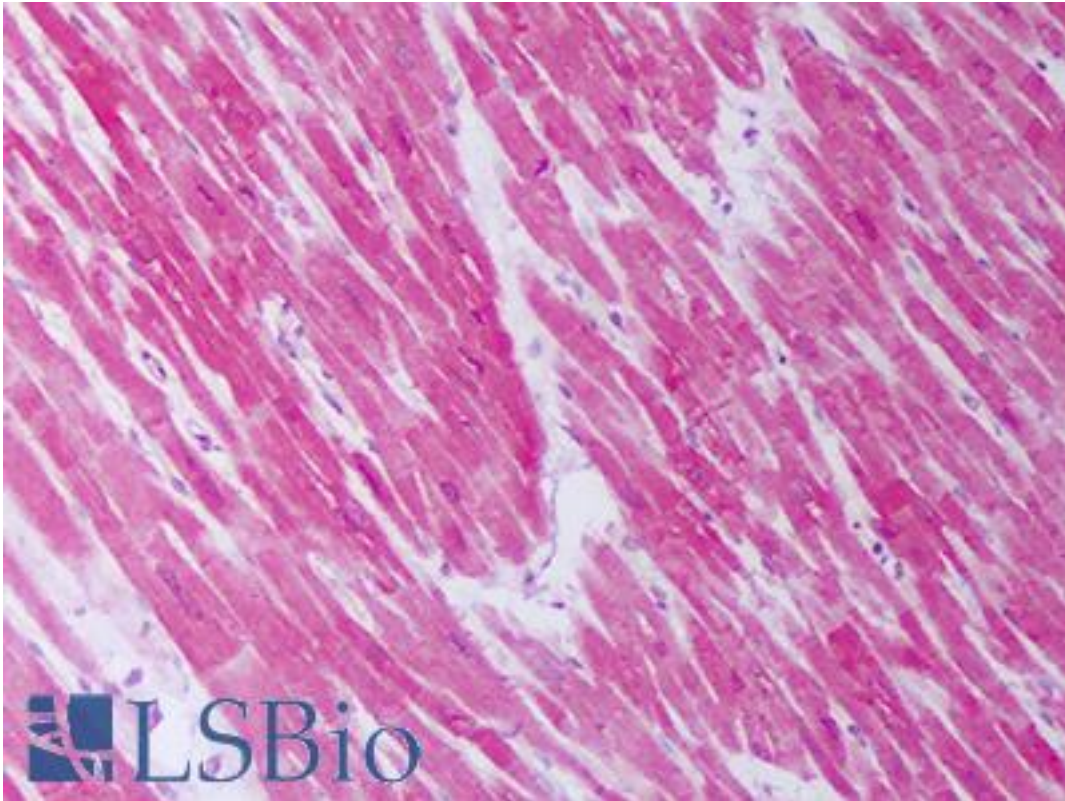


HSPB2 / HSP27 Rabbit Polyclonal Antibody - LS-B7470 - LSBio

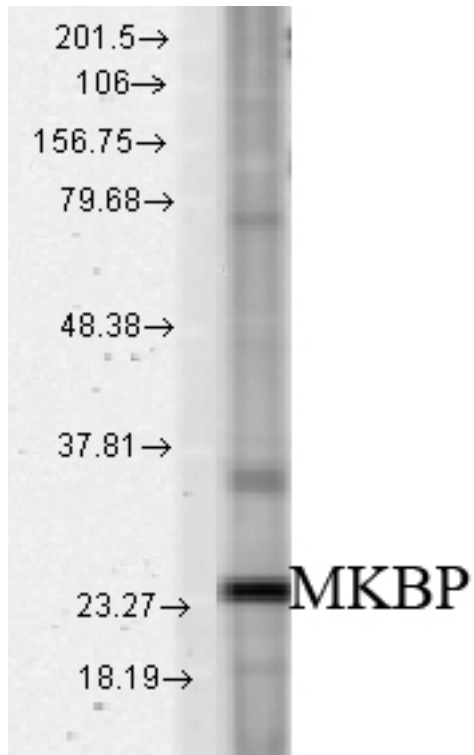
CatalogID:	LS-B7470
Validation:	This antibody replaces catalog number LS-C109071. It has been validated for use in the following assays: IHC-P.
Target:	heat shock 27kDa protein 2 (HSPB2)
Synonyms:	HSPB2 Antibody, DMPK-binding protein Antibody, Heat shock protein beta-2 Antibody, HSP27 Antibody, Heat-shock protein beta-2 Antibody, Hs.78846 Antibody, MKBP Antibody, Heat shock 27kD protein 2 Antibody, Heat shock 27kDa protein 2 Antibody, LOH11CR1K Antibody
Host	HSPB2 antibody was produced in Rabbit
Clonality:	Polyclonal
Antigen Type:	Synthetic peptide
Immunogen:	HSPB2 / HSP27 antibody was raised against synthetic peptide from human HSPB2.
Specificity:	Detects ~27 kD protein.
Reactivity:	Human, Mouse, Rat
Purification:	Affinity purified
Presentation:	PBS, 50% glycerol, 0.02% sodium azide
Recommended Storage:	Short term 4°C, long term aliquot and store at -20°C, avoid freeze thaw cycles.
Uses:	IHC - Paraffin (5 µg/ml), Western blot (1:1000) (Optimal dilution to be determined by the researcher)
Size:	50 µg
Concentration:	1 mg/ml

Immunohistochemistry Image:



Anti-HSPB2 antibody IHC of human heart. Immunohistochemistry of formalin-fixed, paraffin-embedded tissue after heat-induced antigen retrieval. Antibody LS-B7470 concentration 5 ug/ml.

Western Blot Image:



Western blot analysis of MKBP in a rat tissue mix using a 1:1000 dilution of HSPB2 / HSP27 antibody.

Requested From:

Japan

Laboratory Reagent For In Vitro Research Use Only

Not for resale without prior written consent from LifeSpan BioSciences, Inc.

Created on 9/24/2014

© 2014 LifeSpan BioSciences