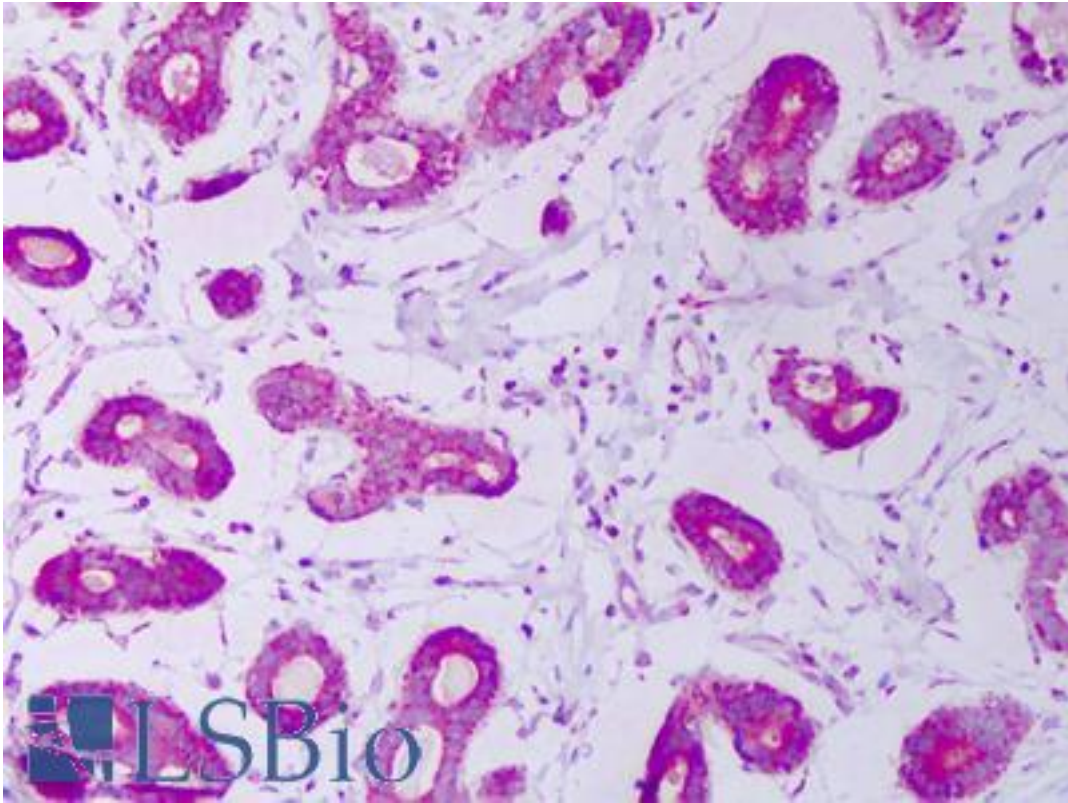


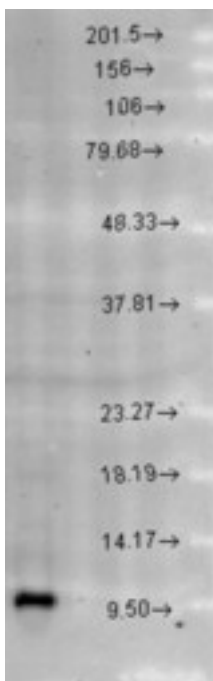
HSPE1 / HSP10 / Chaperonin 10 Rabbit anti-Human Polyclonal Antibody - LS-B7469 - LSBio	
CatalogID:	LS-B7469
Validation:	This antibody replaces catalog number LS-C109070. It has been validated for use in the following assays: IHC-P.
Target:	heat shock 10kDa protein 1 (HSPE1)
Synonyms:	HSPE1 Antibody, 10 kd chaperonin Antibody, 10 kDa chaperonin Antibody, Chaperonin 10 Antibody, CPN10 Antibody, Early-pregnancy factor Antibody, EPF Antibody, GROES Antibody, HSP10 Antibody
Host	HSPE1 antibody was produced in Rabbit
Clonality:	Polyclonal
Immunogen Species:	HSPE1 / HSP10 / Chaperonin 10 antibody was raised against Human
Antigen Type:	Synthetic peptide
Immunogen:	HSPE1 / HSP10 / Chaperonin 10 antibody was raised against human Cpn10 peptide AA 91-101.
Specificity:	Detects ~10 kD protein.
Reactivity:	Human, Mouse, Rat, Bovine, Dog, Guinea pig, Pig, Rabbit, Sheep, Xenopus
Purification:	Protein A purified
Presentation:	PBS, pH 7.3, 0.02% sodium azide
Recommended Storage:	Long term: -20°C; Short term: +4°C; Avoid freeze-thaw cycles.
Uses:	IHC - Paraffin (10 µg/ml), Western blot (1:1000), Immunoprecipitation, ELISA (Optimal dilution to be determined by the researcher)
Size:	50 µg
Concentration:	1 mg/ml

Immunohistochemistry Image:



Anti-HSPE1 / CPN10 antibody IHC of human breast. Immunohistochemistry of formalin-fixed, paraffin-embedded tissue after heat-induced antigen retrieval. Antibody LS-B7469 concentration 10 ug/ml.

Western Blot Image:



Cpn10, Rat brain extract.

Requested From:	Japan
Laboratory Reagent For In Vitro Research Use Only	
Not for resale without prior written consent from LifeSpan BioSciences, Inc.	
Created on 9/24/2014	
© 2014 LifeSpan BioSciences	