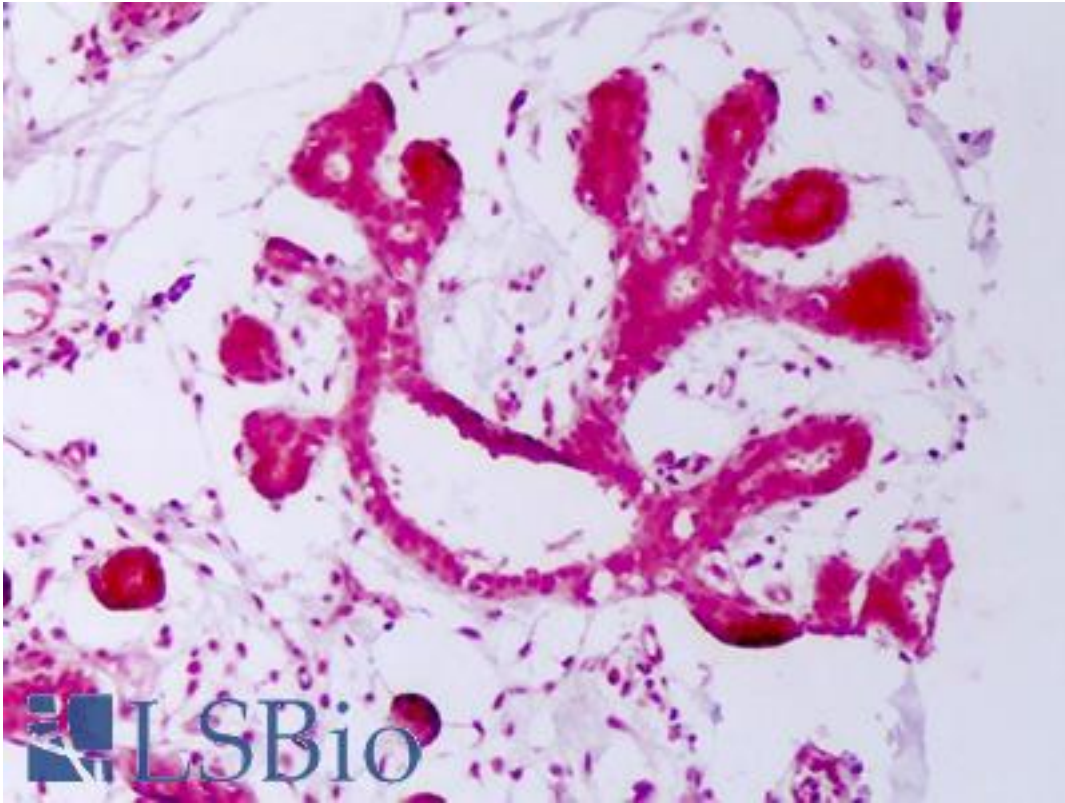


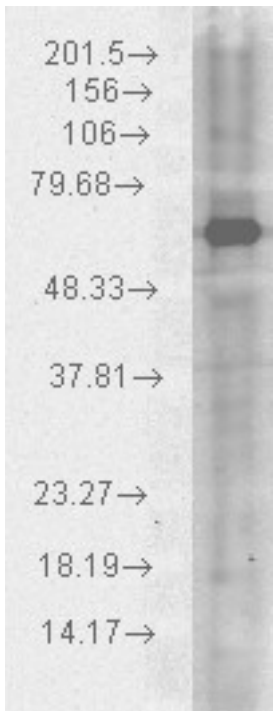
| HSP70 / Heat Shock Protein 70 Chicken anti-Human Polyclonal Antibody - LS-B7468 - LSBio |   |
|---|---|
| <b>CatalogID:</b>   | LS-B7468  |
| <b>Validation:</b>  | This antibody replaces catalog number LS-C109062. It has been validated for use in the following assays: IHC-P. |
| <b>Target:</b>  | HSP70 / Heat Shock Protein 70   |
| <b>Host</b>   | Chicken   |
| <b>Clonality:</b>   | Polyclonal  |
| <b>Immunogen Species:</b>   | Human   |
| <b>Antigen Type:</b>  | Purified protein  |
| <b>Immunogen:</b>   | Full length Human Hsp70.  |
| <b>Specificity:</b>   | Hsp70.  |
| <b>Reactivity:</b>  | Human, Mouse, Rat   |
| <b>Purification:</b>  | PEG purified  |
| <b>Presentation:</b>  | PBS, pH 7.4, 50% glycerol, 0.09% azide  |
| <b>Recommended Storage:</b>   | Short term 4°C, long term aliquot and store at -20°C, avoid freeze thaw cycles.                                 |
| <b>Uses:</b>  | IHC - Paraffin (5 µg/ml), Western blot (1:1000), ELISA (Optimal dilution to be determined by the researcher)    |
| <b>Size:</b>  | 50 µg   |
| <b>Concentration:</b>   | 1 mg/ml   |

**Immunohistochemistry Image:**



Anti-HSP70 / Heat Shock Protein 70 antibody IHC of human breast. Immunohistochemistry of formalin-fixed, paraffin-embedded tissue after heat-induced antigen retrieval. Antibody LS-B7468 concentration 5 ug/ml.

**Western Blot Image:**



Antibody LS-B7468 on Hela Cell Lysate.

**Requested From:**

Japan

Laboratory Reagent For In Vitro Research Use Only

Not for resale without prior written consent from LifeSpan BioSciences, Inc.

Created on 9/24/2014

© 2014 LifeSpan BioSciences