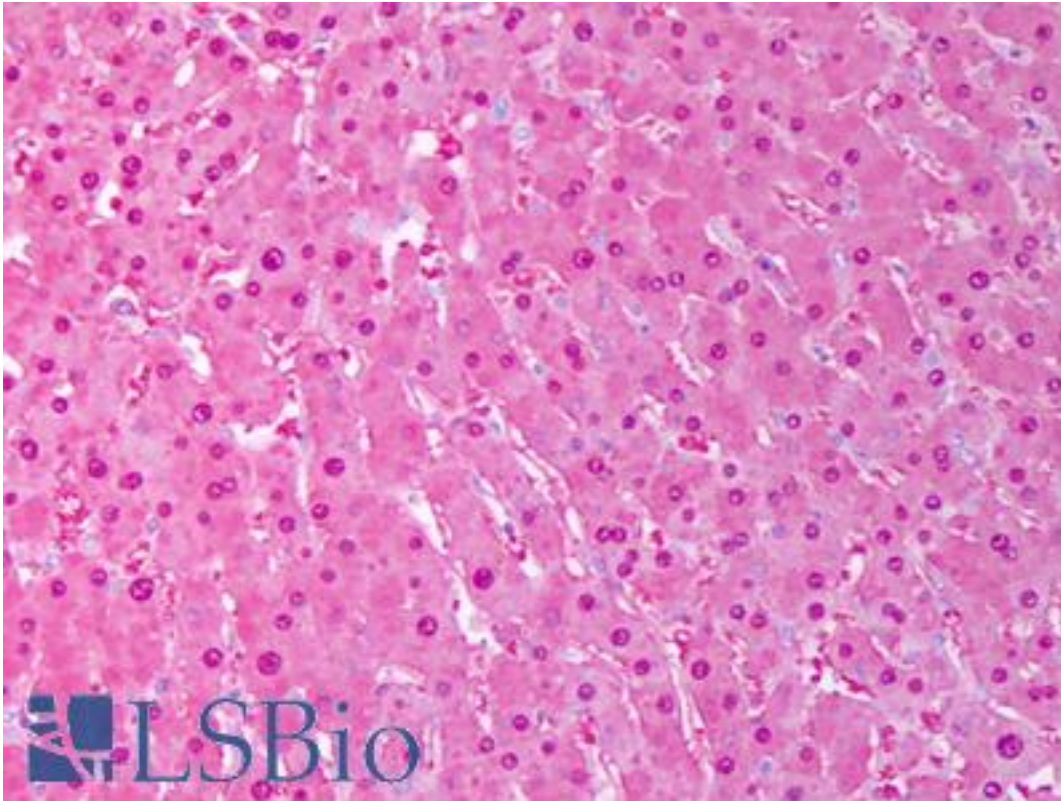


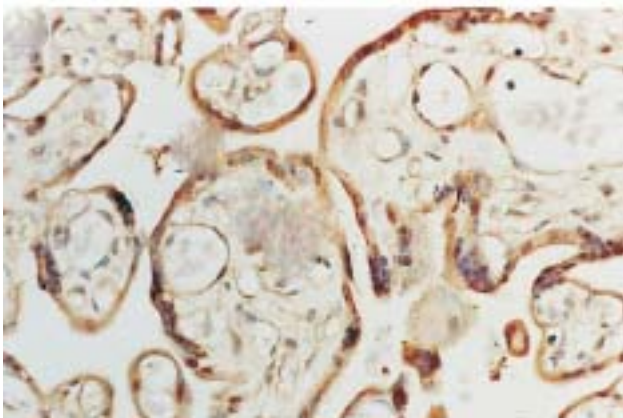
SOD1 / SOD Rabbit anti-Human Polyclonal Antibody - LS-B7467 - LSBio	
<b>CatalogID:</b>	LS-B7467
<b>Validation:</b>	This antibody replaces catalog number LS-C109051. It has been validated for use in the following assays: IHC-P.
<b>Target:</b>	superoxide dismutase 1, soluble (SOD1)
<b>Synonyms:</b>	SOD1 Antibody, ALS Antibody, ALS1 Antibody, Cu/Zn superoxide dismutase Antibody, HSod1 Antibody, Homodimer Antibody, IPOA Antibody, SOD, soluble Antibody, SOD Antibody, Superoxide dismutase [Cu-Zn] Antibody, Superoxide dismutase 1 Antibody, Indophenoloxidase A Antibody, Superoxide dismutase, cystolic Antibody
<b>Host</b>	SOD1 antibody was produced in Rabbit
<b>Clonality:</b>	Polyclonal
<b>Immunogen Species:</b>	SOD1 / SOD antibody was raised against Human
<b>Antigen Type:</b>	Purified protein
<b>Immunogen:</b>	SOD1 / SOD antibody was raised against human Cu/Zn SOD.
<b>Specificity:</b>	Detects 23kD (human) and 19kD (other species) proteins, corresponding to the molecular mass of Cu/Zn superoxide dismutase (SOD) on SDS-PAGE immunoblots.
<b>Reactivity:</b>	Human, Monkey, Mouse, Rat, Bovine, Dog, Hamster, Pig, Rabbit, Sheep, Xenopus, Coral
<b>Purification:</b>	Immunoaffinity purified
<b>Presentation:</b>	PBS, pH 7.0, 0.1% sodium azide, 50% glycerol
<b>Recommended Storage:</b>	Short term 4°C, long term aliquot and store at -20°C, avoid freeze thaw cycles.
<b>Usage Summary:</b>	Western Blot: 0.2 ug/ml was sufficient for detection of Cu/Zn SOD in 20 ug of HeLa cell lysate.
<b>Uses:</b>	IHC - Paraffin (10 µg/ml), Western blot (0.2 µg/ml), Immunoprecipitation, ELISA (Optimal dilution to be determined by the researcher)
<b>Size:</b>	50 µg
<b>Concentration:</b>	1 mg/ml

**Immunohistochemistry Image:**



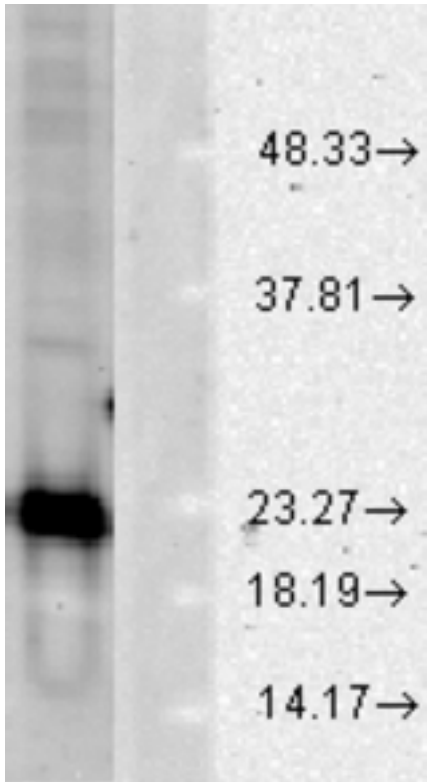
Anti-SOD1 antibody IHC of human liver, hepatocytes. Immunohistochemistry of formalin-fixed, paraffin-embedded tissue after heat-induced antigen retrieval. Antibody LS-B7467 concentration 10 ug/ml.

**Immunocytochemistry Image:**



ICC localization of human Cu/Zn SOD in the syncytiotrophoblast of human placenta.

**Western Blot Image:**



Western blot analysis of Cu/Zn SOD in a human cell line mix, using a 1:1000 dilution of SOD1 / SOD antibody.

**Requested From:**

Japan

Laboratory Reagent For In Vitro Research Use Only

Not for resale without prior written consent from LifeSpan BioSciences, Inc.

Created on 9/24/2014

© 2014 LifeSpan BioSciences