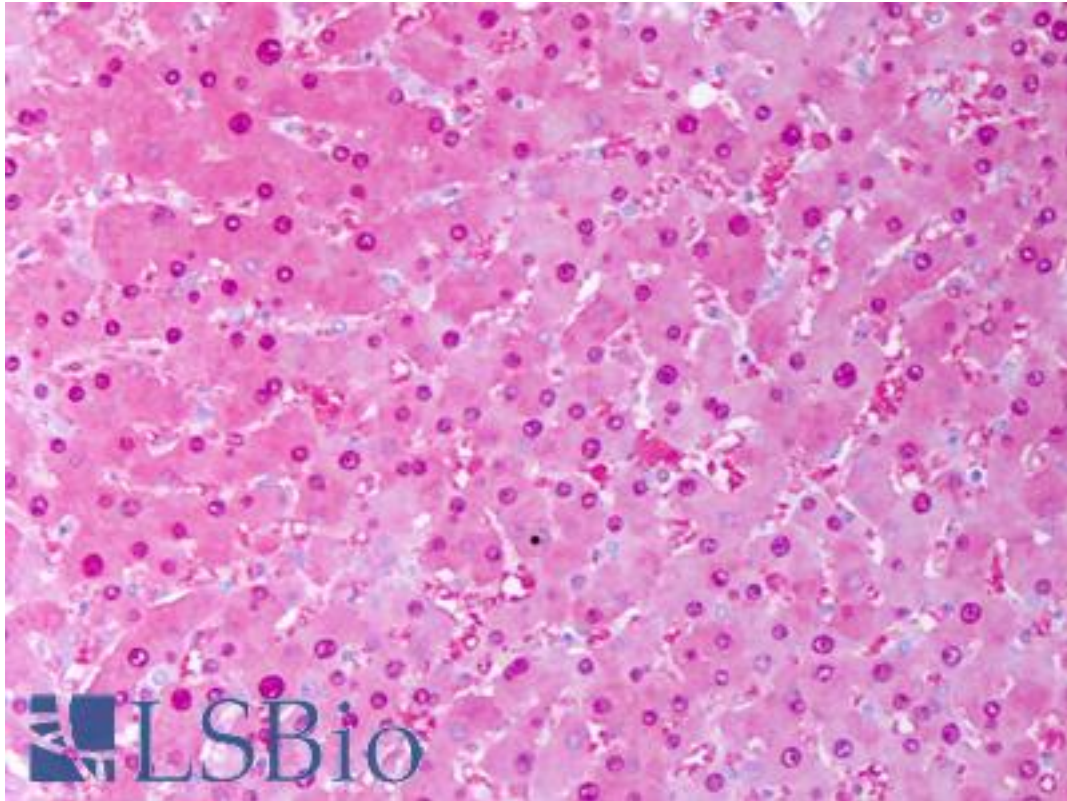


SOD1 / SOD Rabbit anti-Rat Polyclonal Antibody - LS-B7466 - LSBio

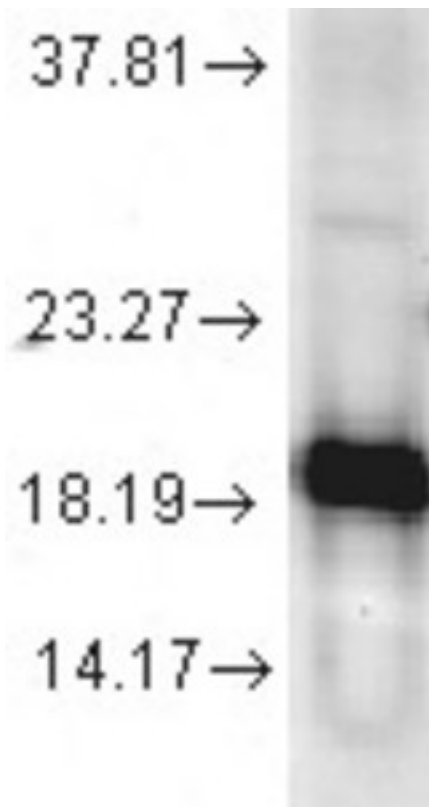
CatalogID:	LS-B7466
Validation:	This antibody replaces catalog number LS-C109050. It has been validated for use in the following assays: IHC-P.
Target:	superoxide dismutase 1, soluble (SOD1)
Synonyms:	SOD1 Antibody, ALS Antibody, ALS1 Antibody, Cu/Zn superoxide dismutase Antibody, HSod1 Antibody, Homodimer Antibody, IPOA Antibody, SOD, soluble Antibody, SOD Antibody, Superoxide dismutase [Cu-Zn] Antibody, Superoxide dismutase 1 Antibody, Indophenoloxidase A Antibody, Superoxide dismutase, cystolic Antibody
Host	SOD1 antibody was produced in Rabbit
Clonality:	Polyclonal
Immunogen Species:	SOD1 / SOD antibody was raised against Rat
Antigen Type:	Purified protein
Immunogen:	SOD1 / SOD antibody was raised against rat Cu/Zn SOD.
Specificity:	Detects 23kD (human) and 19kD (other species) proteins, corresponding to the molecular mass of Cu/Zn superoxide dismutase (SOD) on SDS-PAGE immunoblots.
Reactivity:	Rat, Human, Mouse, Bovine
Purification:	Immunoaffinity purified
Presentation:	PBS, pH 7.0, 0.1% sodium azide, 50% glycerol
Recommended Storage:	Short term 4°C, long term aliquot and store at -20°C, avoid freeze thaw cycles.
Usage Summary:	Western Blot: 0.5 ug/ml was sufficient for detection of Cu/Zn SOD in 20 ug of rat brain tissue extract.
Uses:	IHC - Paraffin (10 µg/ml), Western blot (0.5 µg/ml), Immunoprecipitation, ELISA (Optimal dilution to be determined by the researcher)
Size:	50 µg
Concentration:	1 mg/ml

Immunohistochemistry Image:



Anti-SOD1 antibody IHC of human liver, hepatocytes. Immunohistochemistry of formalin-fixed, paraffin-embedded tissue after heat-induced antigen retrieval. Antibody LS-B7466 concentration 10 ug/ml.

Western Blot Image:



Cu/Zn SOD (Rat), Human Cell line mix.

Requested From:

Japan

Laboratory Reagent For In Vitro Research Use Only

Not for resale without prior written consent from LifeSpan BioSciences, Inc.

Created on 9/24/2014

© 2014 LifeSpan BioSciences