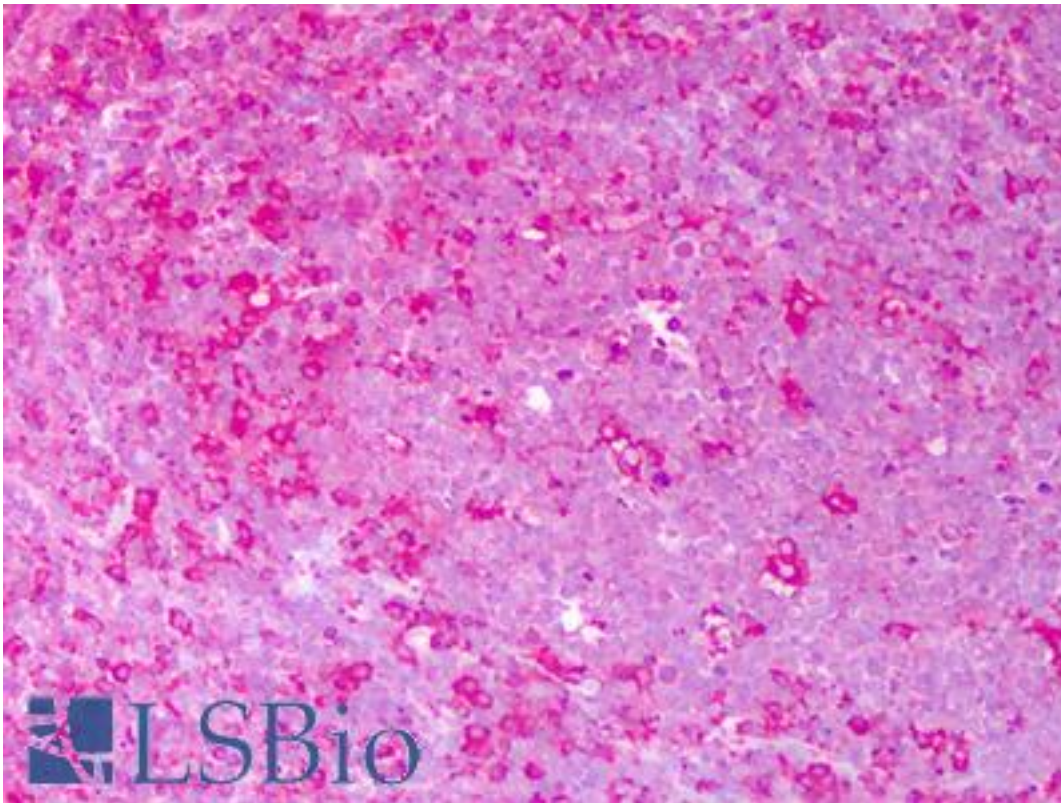


PDI Rabbit anti-Rat Polyclonal Antibody - LS-B7465 - LSBio

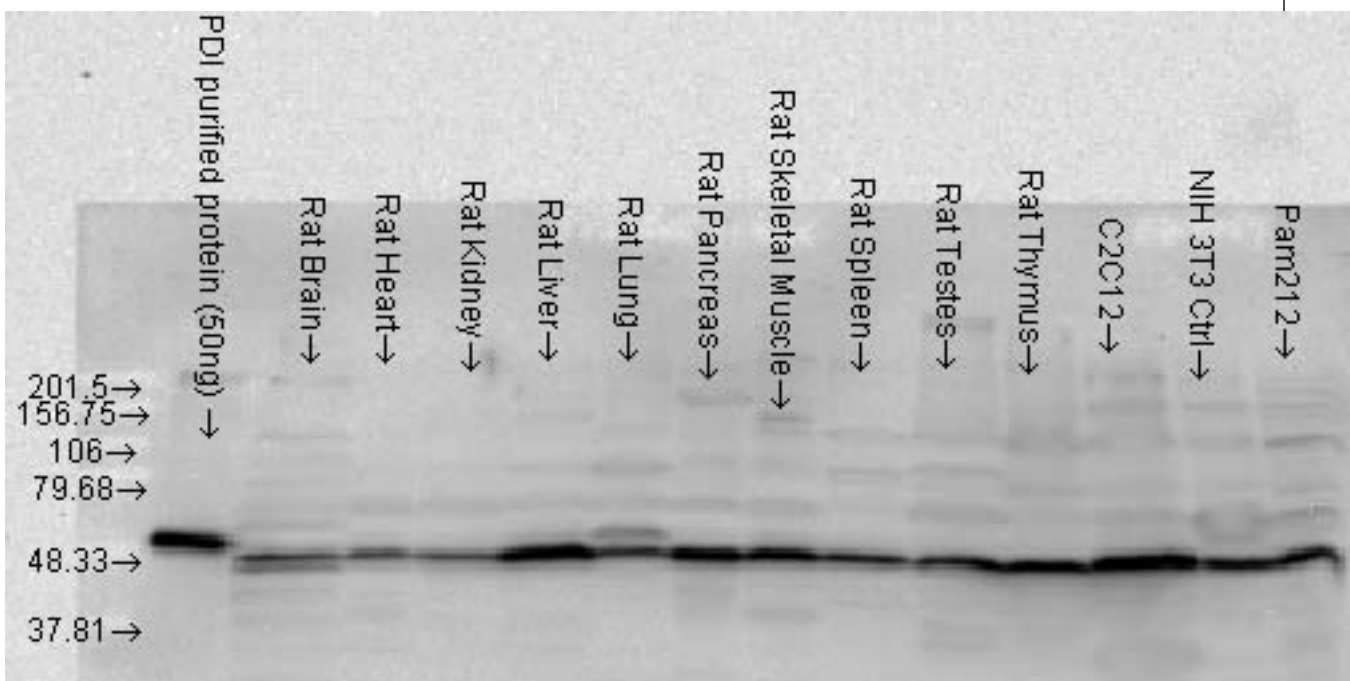
CatalogID:	LS-B7465
Validation:	This antibody replaces catalog number LS-C109049. It has been validated for use in the following assays: IHC-P.
Target:	Protein Disulfide Isomerase (PDI)
Host	Protein Disulfide Isomerase (PDI) antibody was produced in Rabbit
Clonality:	Polyclonal
Immunogen Species:	PDI antibody was raised against Rat
Antigen Type:	Synthetic peptide - KLH conjugated
Immunogen:	PDI antibody was raised against rat PDI synthetic peptide conjugated to KLH.
Specificity:	Detects ~58 kD protein.
Reactivity:	Rat, Human, Monkey, Mouse, Bovine, Dog, Guinea pig, Hamster, Pig, Sheep, Xenopus
Purification:	Unpurified serum
Presentation:	Antiserum
Recommended Storage:	Short term 4°C, long term aliquot and store at -20°C, avoid freeze thaw cycles.
Uses:	IHC - Paraffin (1:100 - 1:250), ICC, Western blot (1:4000), Immunoprecipitation (Optimal dilution to be determined by the researcher)
Size:	50 µl

Immunohistochemistry Image:



Anti-PDI antibody IHC of human tonsil, germinal center. Immunohistochemistry of formalin-fixed, paraffin-embedded tissue after heat-induced antigen retrieval. Antibody LS-B7465 concentration 10 ug/ml.

Western Blot Image:



PDI, Rat tissue.

Requested From:	Japan
Laboratory Reagent For In Vitro Research Use Only	
Not for resale without prior written consent from LifeSpan BioSciences, Inc.	
Created on 9/24/2014	
© 2014 LifeSpan BioSciences	