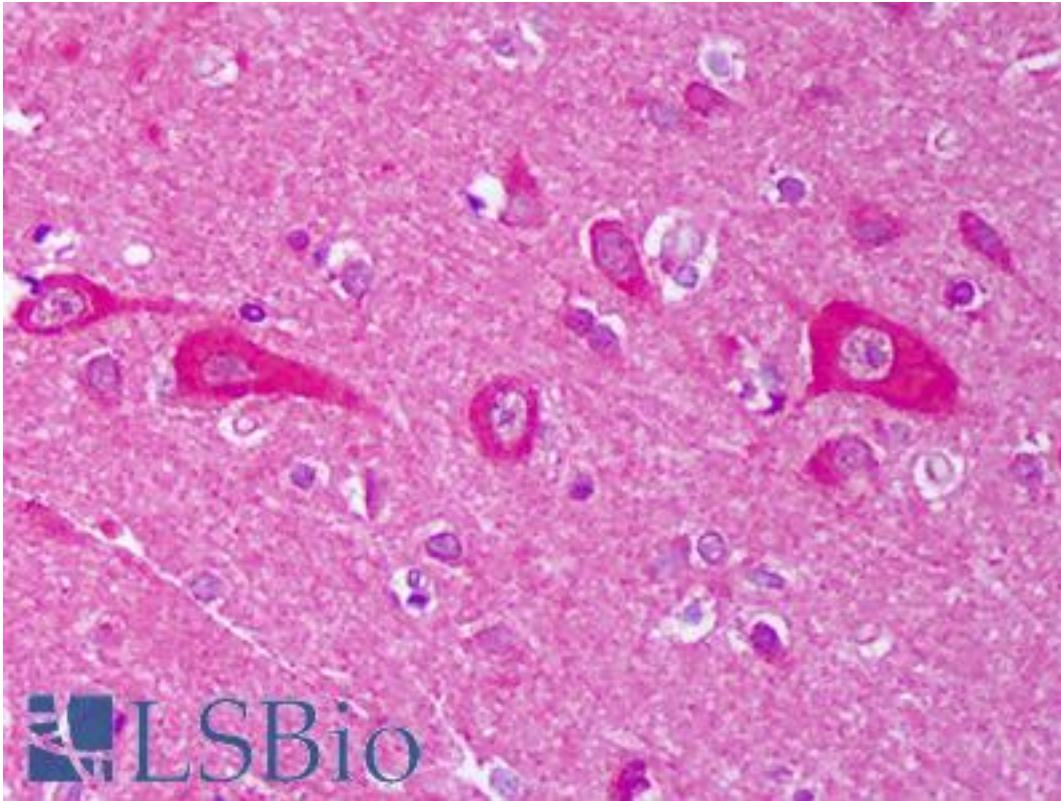


**AHSA1 / AHA1 Rat anti-Mouse Monoclonal (25F2.D9) Antibody - LS-B7456 - LSBio**

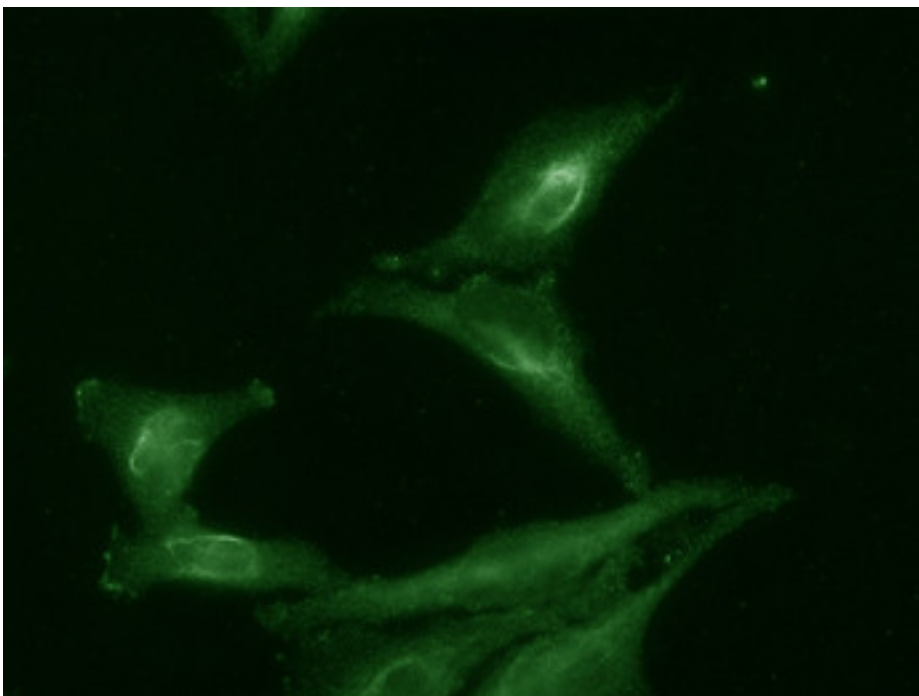
<b>CatalogID:</b>	LS-B7456
<b>Validation:</b>	This antibody replaces catalog number LS-C108994. It has been validated for use in the following assays: IHC-P.
<b>Target:</b>	AHA1, activator of heat shock 90kDa protein ATPase homolog 1 (yeast) (AHSA1)
<b>Synonyms:</b>	AHSA1 Antibody, AHA1 Antibody, C14orf3 Antibody, p38 Antibody
<b>Host</b>	AHSA1 antibody was produced in Rat
<b>Clonality:</b>	Monoclonal
<b>Isotype:</b>	IgG2a,k
<b>Clone Name:</b>	25F2.D9
<b>Immunogen Species:</b>	AHSA1 / AHA1 antibody was raised against Mouse
<b>Antigen Type:</b>	Purified protein
<b>Immunogen:</b>	AHSA1 / AHA1 antibody was raised against mouse Aha1.
<b>Specificity:</b>	Detects ~38kD protein, can run at up to 45kD on SDS-PAGE.
<b>Reactivity:</b>	Mouse, Human, Rat
<b>Purification:</b>	Protein G purified
<b>Presentation:</b>	20 mM potassium phosphate, 0.15 M sodium chloride, pH 7.2
<b>Recommended Storage:</b>	Short term 4°C, long term aliquot and store at -20°C, avoid freeze thaw cycles.
<b>Uses:</b>	IHC - Paraffin (5 µg/ml), ICC, Immunofluorescence, Western blot, Immunoprecipitation, ELISA (Optimal dilution to be determined by the researcher)
<b>Size:</b>	50 µg
<b>Concentration:</b>	1 mg/ml

**Immunohistochemistry Image:**



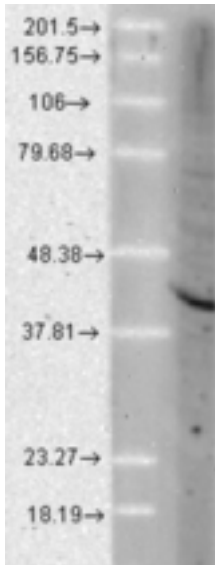
Anti-AHSA1 / AHA1 antibody IHC of human brain, cortex neurons. Immunohistochemistry of formalin-fixed, paraffin-embedded tissue after heat-induced antigen retrieval. Antibody LS-B7456 concentration 5 ug/ml.

**Immunofluorescence Image:**



IF of Aha1 tested on HeLa cell lysates.

**Western Blot Image:**



Western blot analysis of Aha1 in a human cell line mix, using a 1:1000 dilution of AHSA1 / AHA1 antibody.

**Requested From:**

Japan

Laboratory Reagent For In Vitro Research Use Only

Not for resale without prior written consent from LifeSpan BioSciences, Inc.

Created on 9/24/2014

© 2014 LifeSpan BioSciences