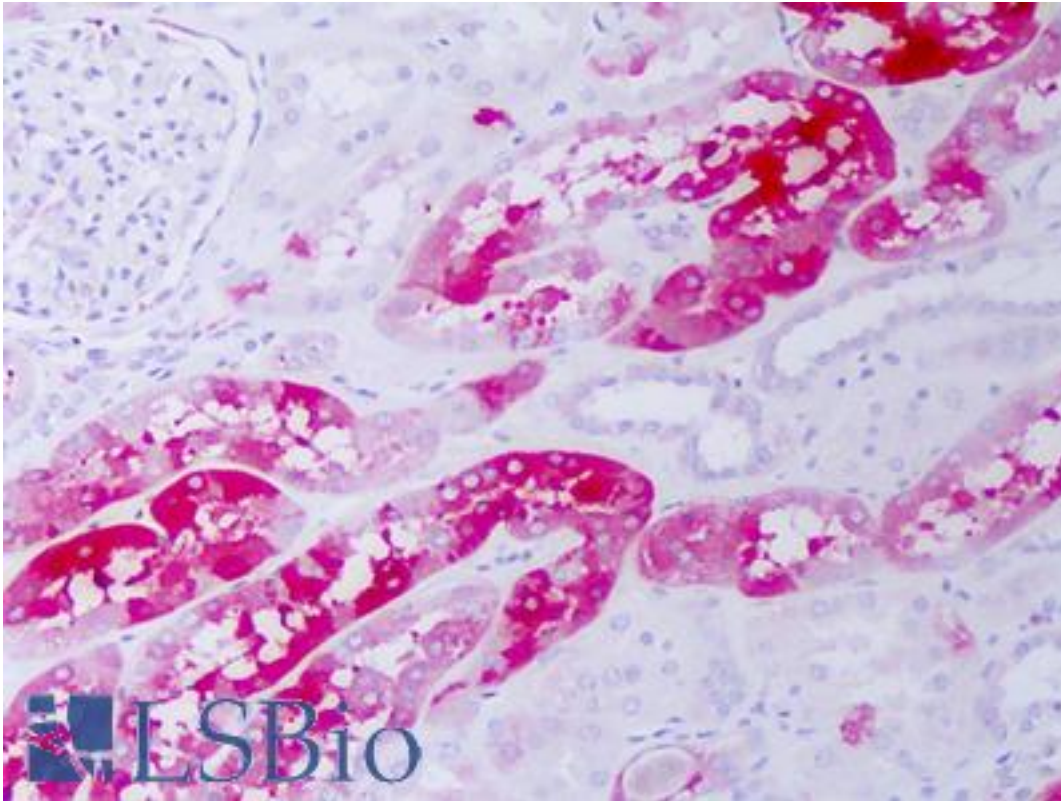


CRYAB / Alpha B Crystallin Mouse Monoclonal (3A10.H4) Antibody - LS-B7454 - LSBio

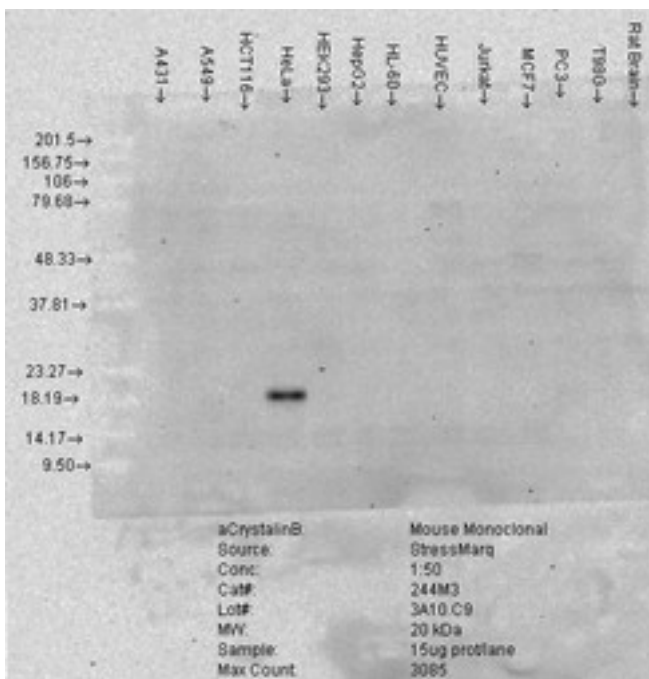
CatalogID:	LS-B7454
Validation:	This antibody replaces catalog number LS-C108989. It has been validated for use in the following assays: IHC-P.
Target:	crystallin, alpha B (CRYAB)
Synonyms:	CRYAB Antibody, Alpha-crystallin B chain Antibody, CRYA2 Antibody, Crystallin, alpha B Antibody, CTPP2 Antibody, Heat shock protein beta-5 Antibody, HSPB5 Antibody, Alpha B Crystallin Antibody, Alpha(B)-crystallin Antibody, Rosenthal fiber component Antibody, Heat-shock 20 kD like-protein Antibody
Host	CRYAB antibody was produced in Mouse
Clonality:	Monoclonal
Isotype:	IgG1
Clone Name:	3A10.H4
Antigen Type:	Native protein
Immunogen:	CRYAB / Alpha B Crystallin antibody was raised against native Alpha B Crystallin.
Specificity:	Detects a band at ~20kD (Predicted mol. weight is ~21 kD) corresponding to alpha B crystallin. Does not cross react with alpha A crystallin, beta-L crystallin, Beta-H crystallin, gamma crystallin, Hsp25, Hsp27 or Hsp47 proteins.
Reactivity:	Human, Bovine
Purification:	Protein G purified
Presentation:	PBS, pH 7.2; 50% glycerol, 0.09% azide
Recommended Storage:	Short term 4°C, long term aliquot and store at -20°C, avoid freeze thaw cycles.
Uses:	IHC - Paraffin (10 µg/ml), Western blot (1:2000), ELISA (Optimal dilution to be determined by the researcher)
Size:	50 µg
Concentration:	1 mg/ml

Immunohistochemistry Image:



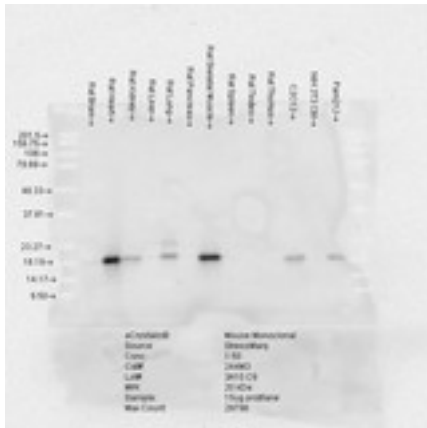
Anti-CRYAB / Alpha B Crystallin antibody IHC of human kidney. Immunohistochemistry of formalin-fixed, paraffin-embedded tissue after heat-induced antigen retrieval. Antibody LS-B7454 concentration 10 ug/ml.

Western Blot Image:



Alpha B Crystallin (3A10.C9), Cell lines.

Western Blot Image:



Alpha B crystallin (3A10-C9), Rat tissues.

Requested From:

Japan

Laboratory Reagent For In Vitro Research Use Only

Not for resale without prior written consent from LifeSpan BioSciences, Inc.

Created on 9/24/2014

© 2014 LifeSpan BioSciences