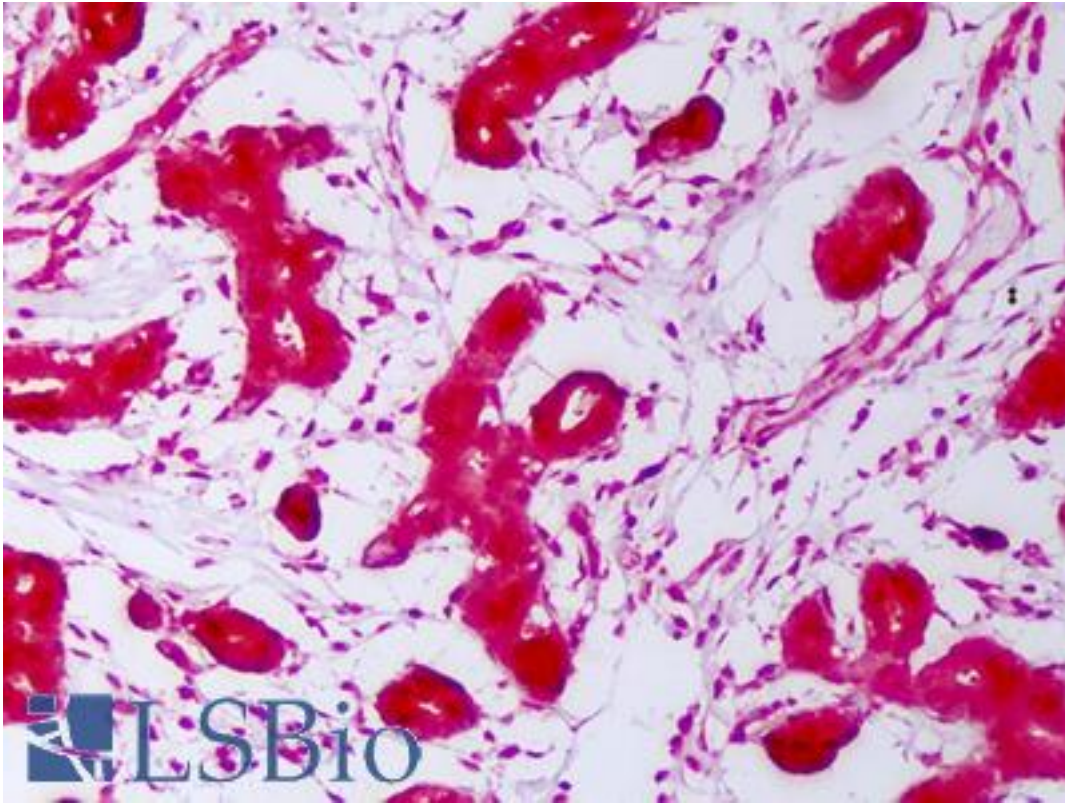


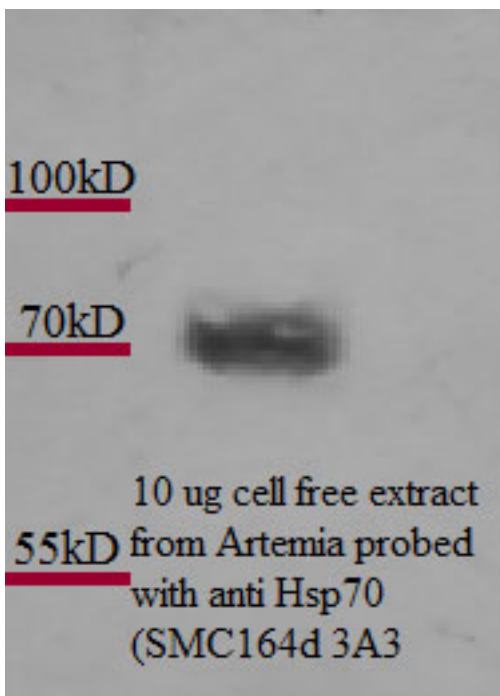
HSP70 / Heat Shock Protein 70 Mouse anti-Human Monoclonal (3A3) Antibody - LS-B7453 - LSBio	
<b>CatalogID:</b>	LS-B7453
<b>Validation:</b>	This antibody replaces catalog number LS-C108988. It has been validated for use in the following assays: IHC-P.
<b>Target:</b>	HSP70 / Heat Shock Protein 70
<b>Host</b>	Mouse
<b>Clonality:</b>	Monoclonal
<b>Isotype:</b>	IgG1
<b>Clone Name:</b>	3A3
<b>Immunogen Species:</b>	Human
<b>Antigen Type:</b>	Recombinant protein
<b>Immunogen:</b>	Human Recombinant Hsp70 overexpressed in E. coli.
<b>Specificity:</b>	Detects several members of the heat shock protein 70kD gene family including Hsp70, Hsc70, p75 and following heat shock, Hsp72 from yeast, Drosophila, fish, mouse, avian, amphibian and human samples.
<b>Reactivity:</b>	Human, Mouse, Rat, Chicken, Fish, Drosophila, Yeast, Amphibian
<b>Purification:</b>	Protein G purified
<b>Presentation:</b>	PBS, pH 7.2; 50% glycerol, 0.09% azide. Sourced in Ascites.
<b>Recommended Storage:</b>	Store at -20°C, avoid freeze thaw cycles.
<b>Usage Summary:</b>	Rat lysate used is a mix of protein lysates from skeletal muscle, brain, heart, kidney, lung, pancreas, spleen, testes and thymus.
<b>Uses:</b>	IHC - Paraffin (2.5 µg/ml), ICC (1:500), Western blot (1:5000), Immunoprecipitation (Optimal dilution to be determined by the researcher)
<b>Size:</b>	50 µg
<b>Concentration:</b>	1 mg/ml

**Immunohistochemistry Image:**



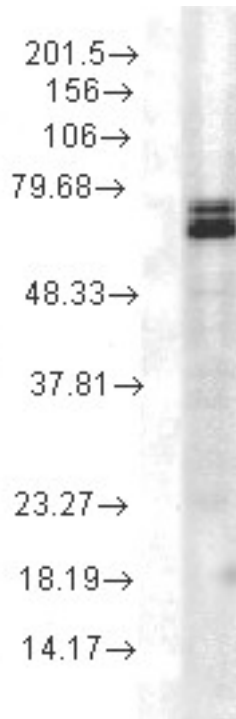
Anti-HSP70 / Heat Shock Protein 70 antibody IHC of human breast. Immunohistochemistry of formalin-fixed, paraffin-embedded tissue after heat-induced antigen retrieval. Antibody LS-B7453 concentration 2.5 ug/ml.

**Western Blot Image:**



Hsp70 (3A3), *Artemia franciscana*.

**Western Blot Image:**



Hsp70 (3A3), Rat tissue lysate.

**Requested From:**

Japan

Laboratory Reagent For In Vitro Research Use Only

Not for resale without prior written consent from LifeSpan BioSciences, Inc.

Created on 9/24/2014

© 2014 LifeSpan BioSciences