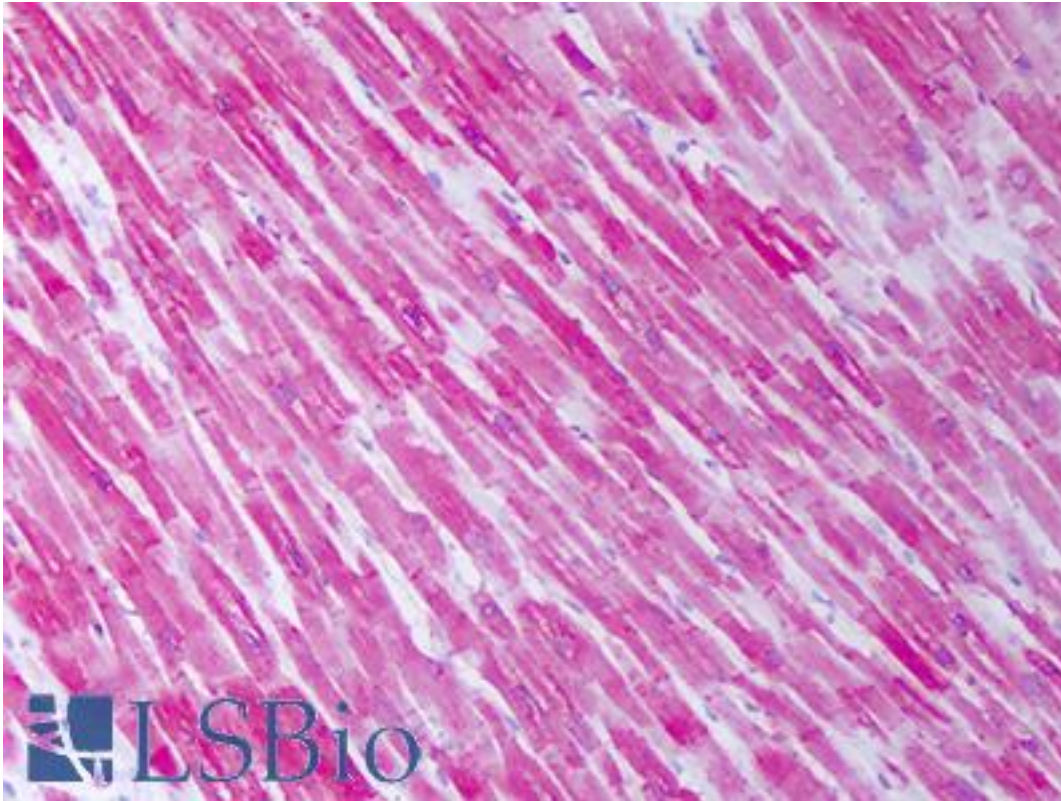


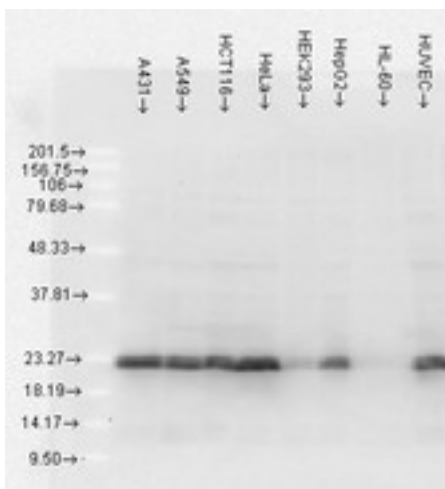
HSPB1 / HSP27 Mouse anti-Human Monoclonal (5D12-A12) Antibody - LS-B7450 - LSBio	
CatalogID:	LS-B7450
Validation:	This antibody replaces catalog number LS-C108985. It has been validated for use in the following assays: IHC-P.
Target:	heat shock 27kDa protein 1 (HSPB1)
Synonyms:	HSPB1 Antibody, 28 kDa heat shock protein Antibody, Heat shock 27 kDa protein Antibody, Heat shock 27kD protein 1 Antibody, Heat shock 27kDa protein 1 Antibody, HSP27 Antibody, HSP28 Antibody, HSP 27 Antibody, Hsp25 Antibody, SRP27 Antibody, Stress-responsive protein 27 Antibody, CMT2F Antibody, Heat shock 27 kd protein Antibody, Heat shock protein beta-1 Antibody, HMN2B Antibody, HS.76067 Antibody
Host	HSPB1 antibody was produced in Mouse
Clonality:	Monoclonal
Isotype:	IgG2b,k
Clone Name:	5D12-A12
Immunogen Species:	HSPB1 / HSP27 antibody was raised against Human
Antigen Type:	Purified protein
Immunogen:	HSPB1 / HSP27 antibody was raised against human Hsp27.
Specificity:	Detects a 27kD protein corresponding to the molecular mass of hsp27 on SDS PAGE immunoblots. There is no cross-reactivity to alphaBcrystallin.
Reactivity:	Human
Purification:	Protein G purified
Presentation:	PBS, pH 7.4, 0.09% sodium azide, 50% glycerol
Recommended Storage:	Short term 4°C, long term aliquot and store at -20°C, avoid freeze thaw cycles.
Uses:	IHC - Paraffin (10 µg/ml), Western blot (0.25 - 0.5 µg/ml), Immunoprecipitation, ELISA (Optimal dilution to be determined by the researcher)
Size:	50 µg
Concentration:	1 mg/ml

Immunohistochemistry Image:



Anti-HSPB1 antibody IHC of human heart. Immunohistochemistry of formalin-fixed, paraffin-embedded tissue after heat-induced antigen retrieval. Antibody LS-B7450 concentration 10 ug/ml.

Western Blot Image:



Hsp27(5D12-A3), HeLa lines.

Requested From:

Japan

Laboratory Reagent For In Vitro Research Use Only

Not for resale without prior written consent from LifeSpan BioSciences, Inc.

Created on 9/24/2014

© 2014 LifeSpan BioSciences