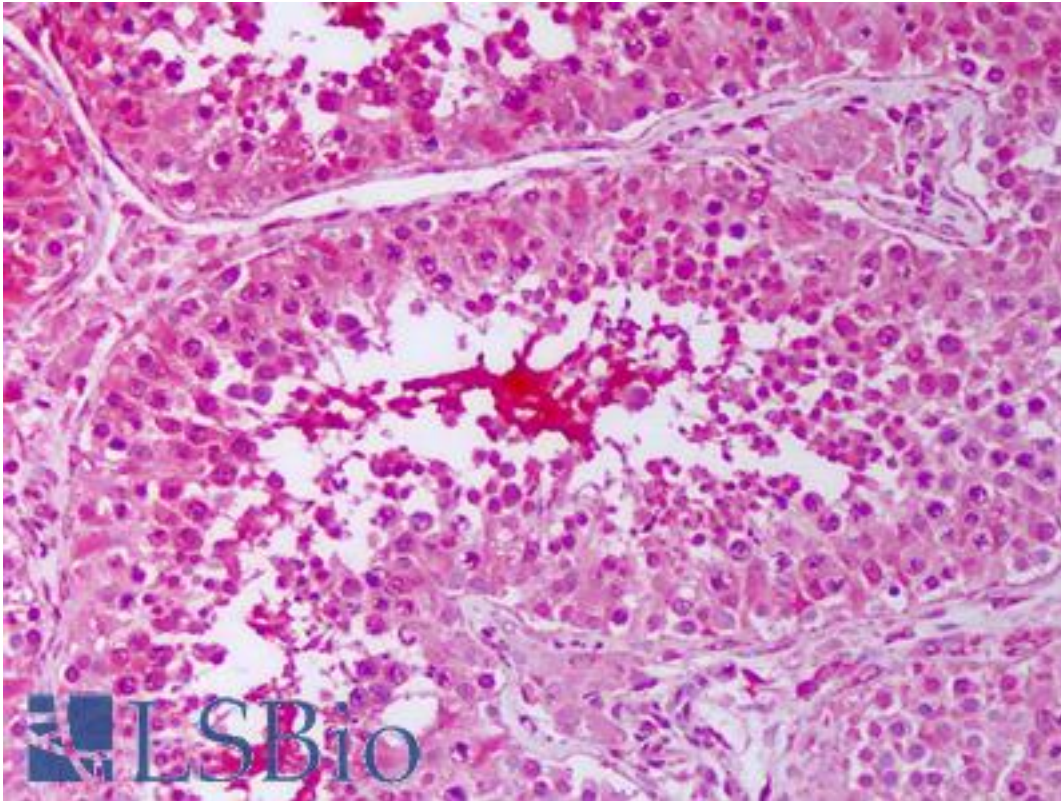


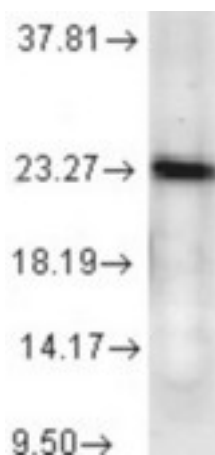
| PTGES3 Mouse anti-Human Monoclonal (JJ6) Antibody - LS-B7448 - LSBio | |
|--|---|
| CatalogID: | LS-B7448 |
| Validation: | This antibody replaces catalog number LS-C108982. It has been validated for use in the following assays: IHC-P. |
| Target: | prostaglandin E synthase 3 (cytosolic) (PTGES3) |
| Synonyms: | PTGES3 Antibody, CPGES Antibody, p23 Antibody, Prostaglandin E synthase 3 Antibody, Telomerase-binding protein p23 Antibody, Hsp90 co-chaperone Antibody, TEBP Antibody |
| Host | PTGES3 antibody was produced in Mouse |
| Clonality: | Monoclonal |
| Isotype: | IgG1 |
| Clone Name: | JJ6 |
| Immunogen Species: | PTGES3 antibody was raised against Human |
| Antigen Type: | Recombinant protein |
| Immunogen: | PTGES3 antibody was raised against recombinant Human full length p23 protein. |
| Specificity: | Detects ~23 kD protein. |
| Reactivity: | Human, Mouse, Guinea pig, Pig, Rabbit, Chicken, Yeast |
| Purification: | Protein G purified |
| Presentation: | PBS, 0.09% sodium azide in 50% glycerol. Sourced in Ascites. |
| Recommended Storage: | Short term 4°C, long term aliquot and store at -20°C, avoid freeze thaw cycles. |
| Uses: | IHC - Paraffin (10 µg/ml), Western blot (1:2000), Immunoprecipitation, ELISA (Optimal dilution to be determined by the researcher) |
| Size: | 50 µg |
| Concentration: | 1 mg/ml |

Immunohistochemistry Image:



Anti-PTGES3 antibody IHC of human testis, seminiferous ducts. Immunohistochemistry of formalin-fixed, paraffin-embedded tissue after heat-induced antigen retrieval. Antibody LS-B7448 concentration 10 ug/ml.

Western Blot Image:



P23 (JJ6), Human cell line mix.

Requested From:

Japan

Laboratory Reagent For In Vitro Research Use Only

Not for resale without prior written consent from LifeSpan BioSciences, Inc.

Created on 9/24/2014

© 2014 LifeSpan BioSciences