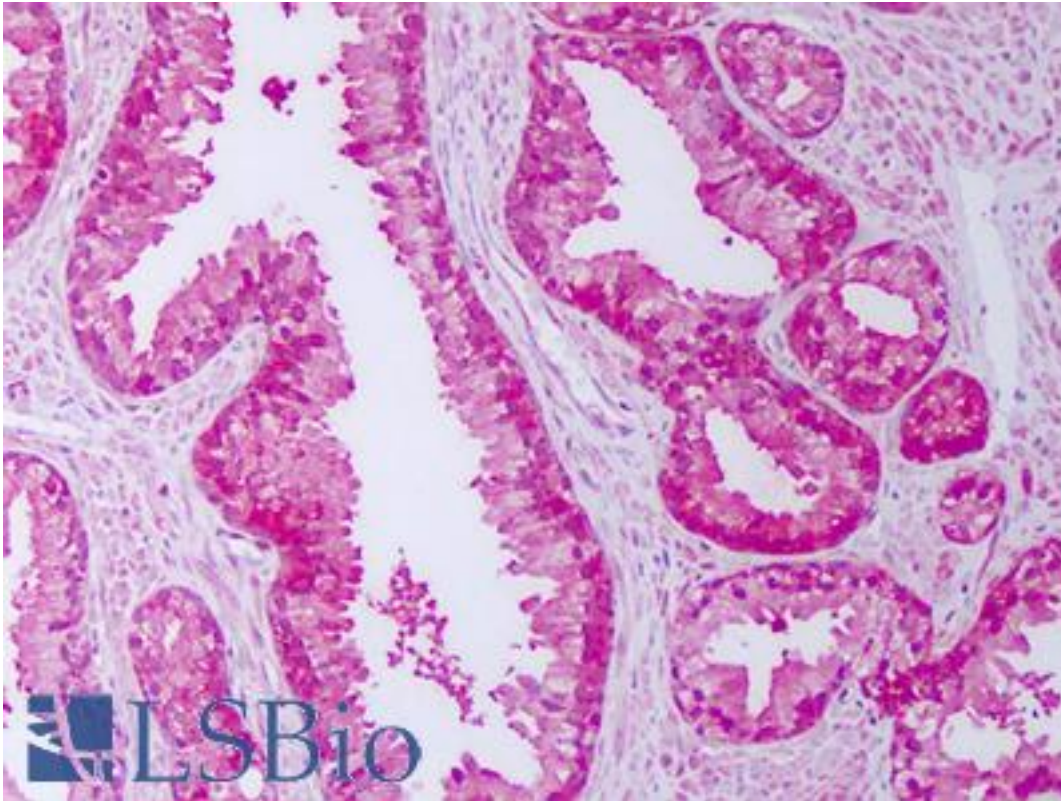


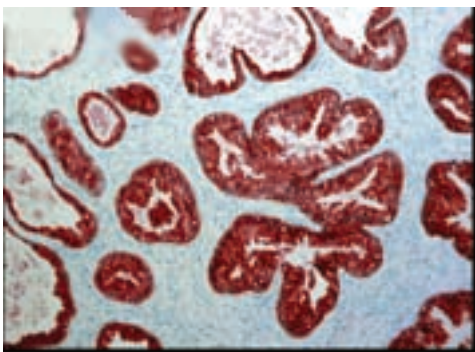
FKBP4 / FKBP52 Mouse anti-Human Monoclonal (Hi52C) Antibody - LS-B7445 - LSBio	
CatalogID:	LS-B7445
Validation:	This antibody replaces catalog number LS-C108969. It has been validated for use in the following assays: IHC-P.
Target:	FK506 binding protein 4, 59kDa (FKBP4)
Synonyms:	FKBP4 Antibody, 59 kDa immunophilin Antibody, 51 kDa FK506-binding protein Antibody, 52 kDa FK506-binding protein Antibody, 52 kDa FKBP Antibody, FKBP-52 Antibody, FKBP51 Antibody, HBI Antibody, Immunophilin FKBP52 Antibody, FK506 binding protein 4, 59kDa Antibody, FK506-binding protein 4 Antibody, HSP56 Antibody, p52 Antibody, p59 Antibody, Rotamase Antibody, p59 protein Antibody, PPlase Antibody, PPlase FKBP4 Antibody, FKBP-4 Antibody, FKBP52 Antibody, FKBP59 Antibody, HSP binding immunophilin Antibody, HSP-binding immunophilin Antibody
Host	FKBP4 antibody was produced in Mouse
Clonality:	Monoclonal
Isotype:	IgG
Clone Name:	Hi52C
Immunogen Species:	FKBP4 / FKBP52 antibody was raised against Human
Antigen Type:	Synthetic peptide
Immunogen:	FKBP4 / FKBP52 antibody was raised against synthetic peptide corresponding to the residues of human FKBP52.
Specificity:	Detects an ~52 kD protein representing FKBP52 in HeLa cell lysate. Also detects FKBP52 in whole tissue extracts from rat kidney and rat and mouse testes. Heavy chain migrates close to FKBP52 on SDS-PAGE.
Reactivity:	Human, Mouse, Rat, Dog, Hamster
Purification:	Protein G purified
Presentation:	PBS, 50% glycerol, 0.09% sodium azide
Recommended Storage:	Short term 4°C, long term aliquot and store at -20°C, avoid freeze thaw cycles.
Usage Summary:	Immunoprecipitation: 5 ug with 10-20 ul Protein A beads.
Uses:	IHC - Paraffin (10 µg/ml), Immunofluorescence, Western blot (1:2000), Immunoprecipitation (Optimal dilution to be determined by the researcher)
Size:	50 µg
Concentration:	1 mg/ml

Immunohistochemistry Image:



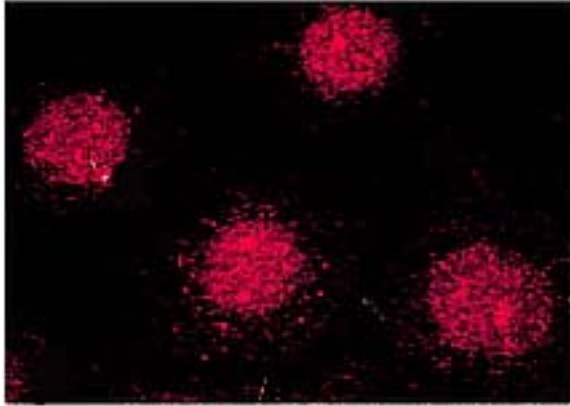
Anti-FKBP52 antibody IHC of human prostate. Immunohistochemistry of formalin-fixed, paraffin-embedded tissue after heat-induced antigen retrieval. Antibody LS-B7445 concentration 10 ug/ml.

Immunohistochemistry Image:



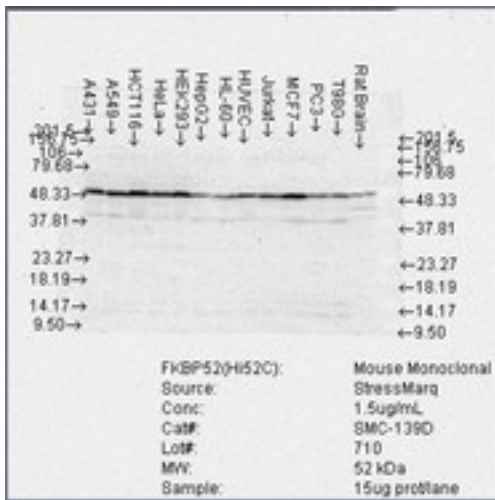
Prostate tissue was histologically stained with antibodies specific for FKBP52. The strongest staining for FKBP52 is in ductal epithelial cells.

Immunofluorescence Image:



FKBP52 (Hi52C), MCF-7 cells.

Western Blot Image:



FKBP52 (Hi52C), Cell lines.

Requested From:

Japan

Laboratory Reagent For In Vitro Research Use Only

Not for resale without prior written consent from LifeSpan BioSciences, Inc.

Created on 9/24/2014

© 2014 LifeSpan BioSciences