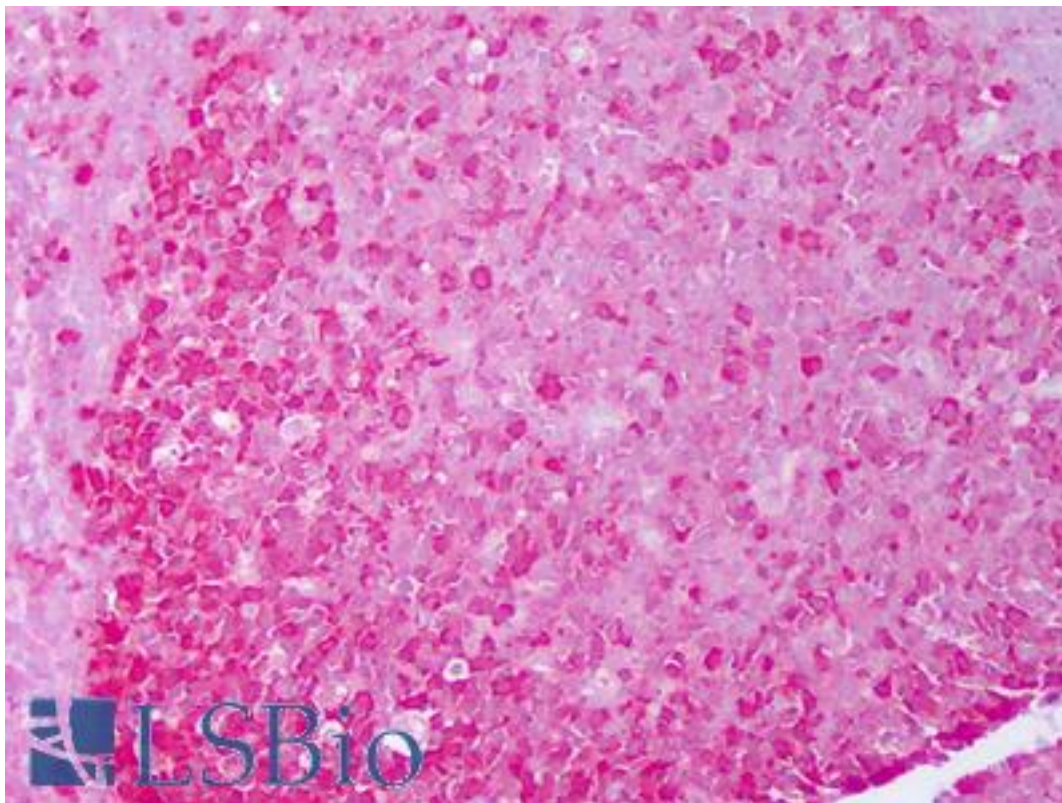


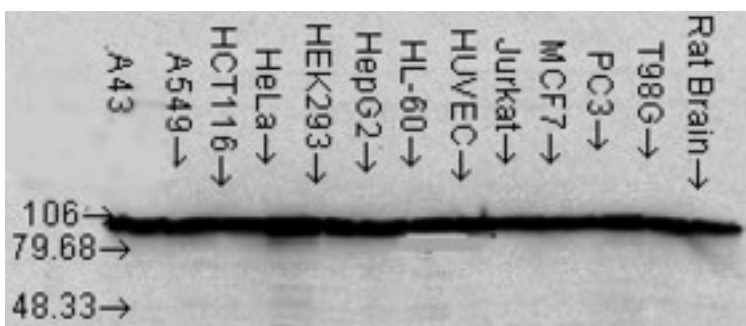
HSP90 Alpha+Beta Mouse anti-Human Monoclonal (Hyb-K41220A) Antibody - LS-B7444 - LSBio	
CatalogID:	LS-B7444
Validation:	This antibody replaces catalog number LS-C108965. It has been validated for use in the following assays: IHC-P.
Target:	HSP90 Alpha + Beta
Host	Mouse
Clonality:	Monoclonal
Isotype:	IgG2a
Clone Name:	Hyb-K41220A
Immunogen Species:	Human
Immunogen:	Recombinant human Hsp90alpha.
Specificity:	Detects both HSP09 alpha and beta, at 90kD.
Reactivity:	Human, Rat, Yeast, S. pombe
Purification:	Protein G purified
Presentation:	PBS, pH 7.2; 50% glycerol, 0.09% azide. Sourced in Ascites.
Recommended Storage:	Short term 4°C, long term aliquot and store at -20°C, avoid freeze thaw cycles.
Usage Summary:	Western Blot: 1 ug/ml was sufficient for detection of hsp90aB in 20 ug of HeLa lysate.
Uses:	IHC - Paraffin (10 µg/ml), Western blot (1 µg/ml), ELISA (Optimal dilution to be determined by the researcher)
Size:	50 µg
Concentration:	1 mg/ml

Immunohistochemistry Image:



Anti-HSP90 antibody IHC of human tonsil, germinal center. Immunohistochemistry of formalin-fixed, paraffin-embedded tissue after heat-induced antigen retrieval. Antibody LS-B7444 concentration 10 ug/ml.

Western Blot Image:



Hsp90 (K41220A), Cell lines.

Requested From:

Japan

Laboratory Reagent For In Vitro Research Use Only

Not for resale without prior written consent from LifeSpan BioSciences, Inc.

Created on 9/24/2014

© 2014 LifeSpan BioSciences