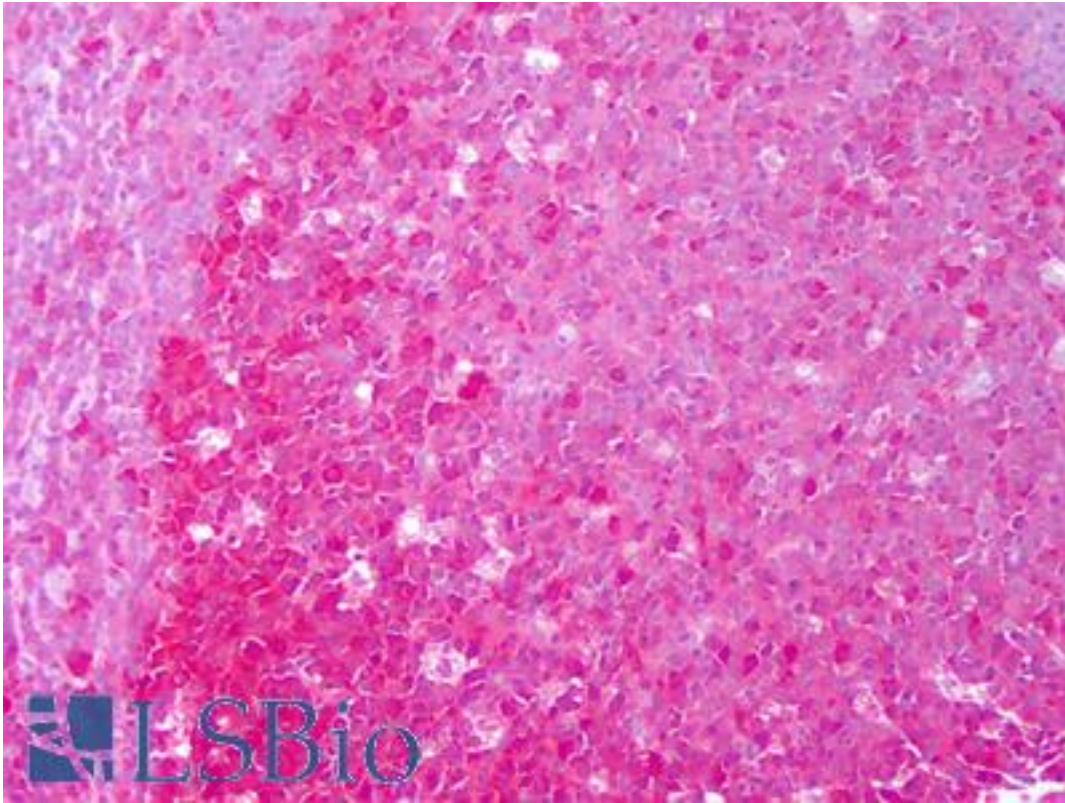


HSP90AA / HSP90 Alpha Mouse anti-Human Monoclonal (Hyb-K41009) Antibody - LS-B7441 - LSBio

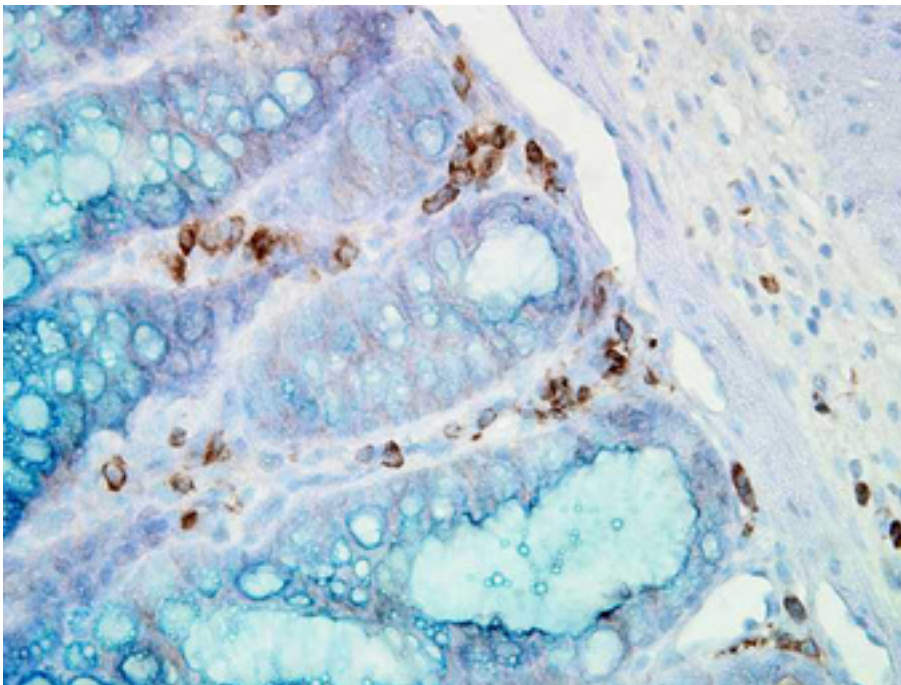
<b>CatalogID:</b>	LS-B7441
<b>Validation:</b>	This antibody replaces catalog number LS-C108955. It has been validated for use in the following assays: IHC-P.
<b>Target:</b>	HSP90 Alpha (HSP90AA)
<b>Host</b>	Mouse
<b>Clonality:</b>	Monoclonal
<b>Isotype:</b>	IgG2a
<b>Clone Name:</b>	Hyb-K41009
<b>Immunogen Species:</b>	Human
<b>Immunogen:</b>	Recombinant human Hsp90alpha.
<b>Specificity:</b>	Detects 90kD proteins corresponding to the molecular mass of hsp90alpha.
<b>Reactivity:</b>	Human, Rat
<b>Purification:</b>	Protein G purified
<b>Presentation:</b>	PBS, pH 7.2; 50% glycerol, 0.09% azide
<b>Recommended Storage:</b>	Short term 4°C, long term aliquot and store at -20°C, avoid freeze thaw cycles.
<b>Usage Summary:</b>	Western Blot: 1 ug/ml was sufficient for detection of hsp90alpha by in 20 ug of HeLa lysate.
<b>Uses:</b>	IHC - Paraffin (10 µg/ml), Western blot (1 µg/ml), ELISA (Optimal dilution to be determined by the researcher)
<b>Size:</b>	50 µg
<b>Concentration:</b>	1 mg/ml

**Immunohistochemistry Image:**



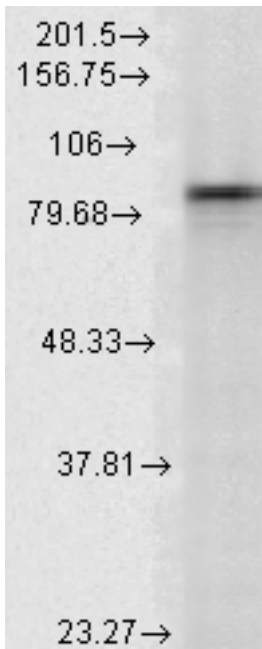
Anti-HSP90AA / HSP90 Alpha antibody IHC of human tonsil, germinal center. Immunohistochemistry of formalin-fixed, paraffin-embedded tissue after heat-induced antigen retrieval. Antibody LS-B7441 concentration 10 ug/ml.

**Immunohistochemistry Image:**



IHC staining of inflammatory cells in mouse colon tissue.

**Western Blot Image:**



Western blot analysis of Hsp90alpha in rat tissues using a 1:1000 dilution of HSP90AA / HSP90 Alpha antibody.

**Requested From:**

Japan

Laboratory Reagent For In Vitro Research Use Only

Not for resale without prior written consent from LifeSpan BioSciences, Inc.

Created on 9/24/2014

© 2014 LifeSpan BioSciences