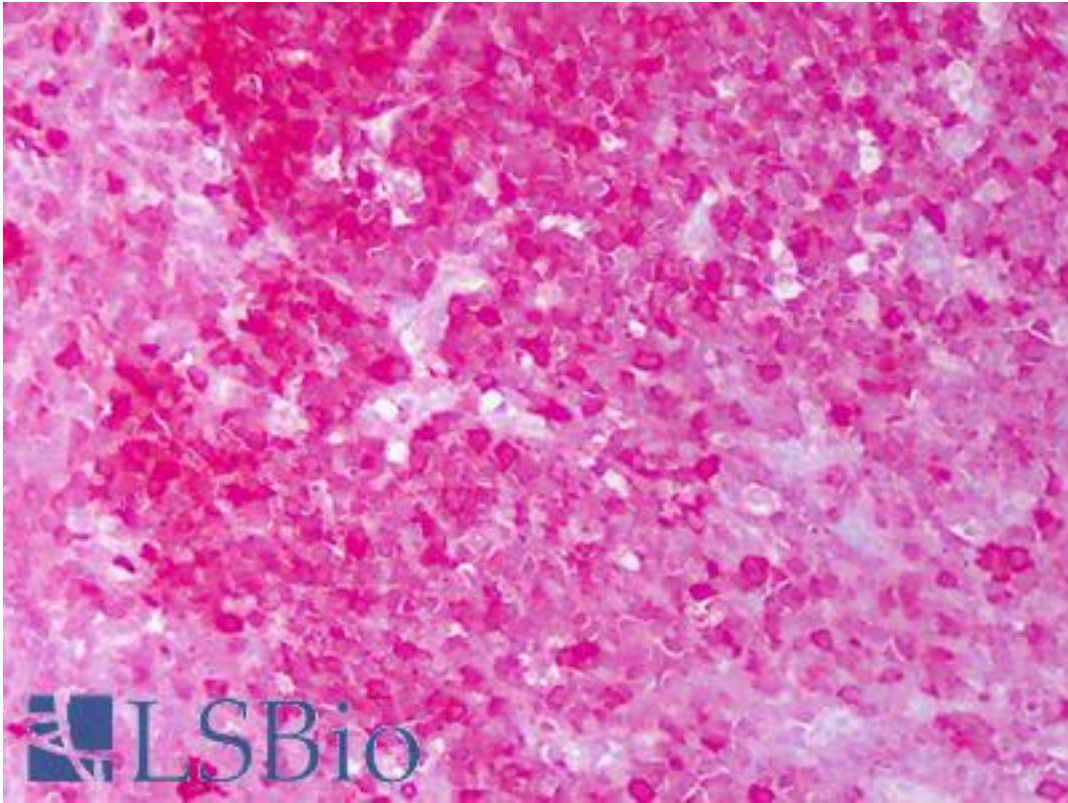


HSP90 / Heat Shock Protein 90 Mouse anti-Human Monoclonal (H9010) Antibody - LS-B7440 - LSBio

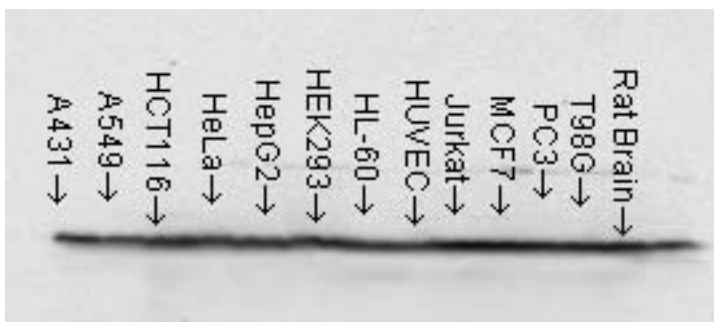
CatalogID:	LS-B7440
Validation:	This antibody replaces catalog number LS-C108954. It has been validated for use in the following assays: IHC-P.
Target:	HSP90 / Heat Shock Protein 90
Host	Mouse
Clonality:	Monoclonal
Isotype:	IgG2a
Clone Name:	H9010
Immunogen Species:	Human
Antigen Type:	Recombinant protein
Immunogen:	Recombinant human Hsp90beta.
Specificity:	Detects 90kD proteins corresponding to the molecular mass of hsp90beta.
Reactivity:	Human, Rat, Dog, Rabbit, Chicken
Purification:	Protein G purified
Presentation:	PBS, pH 7.2; 50% glycerol, 0.09% azide
Recommended Storage:	Short term 4°C, long term aliquot and store at -20°C, avoid freeze thaw cycles.
Usage Summary:	Western Blot: 1 ug/ml was sufficient for detection of hsp90beta in 20 ug of HeLa lysate.
Uses:	IHC - Paraffin (10 µg/ml), Western blot (1 µg/ml), Immunoprecipitation, ELISA (Optimal dilution to be determined by the researcher)
Size:	50 µg
Concentration:	1 mg/ml

Immunohistochemistry Image:



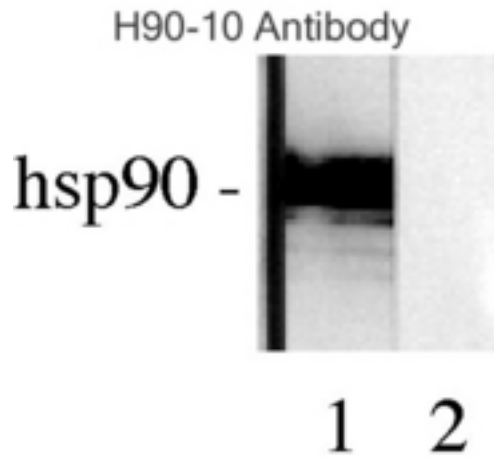
Anti-HSP90 / Heat Shock Protein 90 antibody IHC of human tonsil, germinal center. Immunohistochemistry of formalin-fixed, paraffin-embedded tissue after heat-induced antigen retrieval. Antibody LS-B7440 concentration 10 ug/ml.

Western Blot Image:



Hsp90, Cell lines.

Western Blot Image:



Hsp90, Rabbit reticulocyte lysate.

Western Blot Image:



Hsp90, Heat shock HeLa.

Requested From:

Japan

Laboratory Reagent For In Vitro Research Use Only

Not for resale without prior written consent from LifeSpan BioSciences, Inc.

Created on 9/24/2014

© 2014 LifeSpan BioSciences