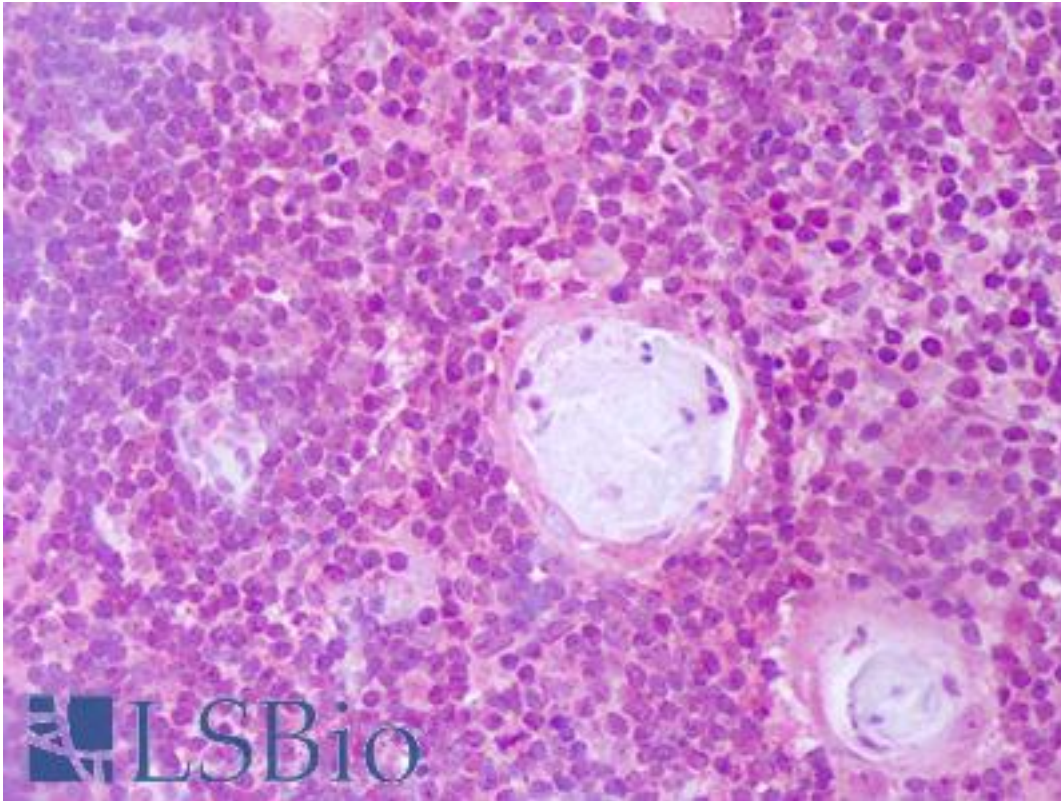


**IL2 Rabbit anti-Human Polyclonal Antibody - LS-B7438 - LSBio**

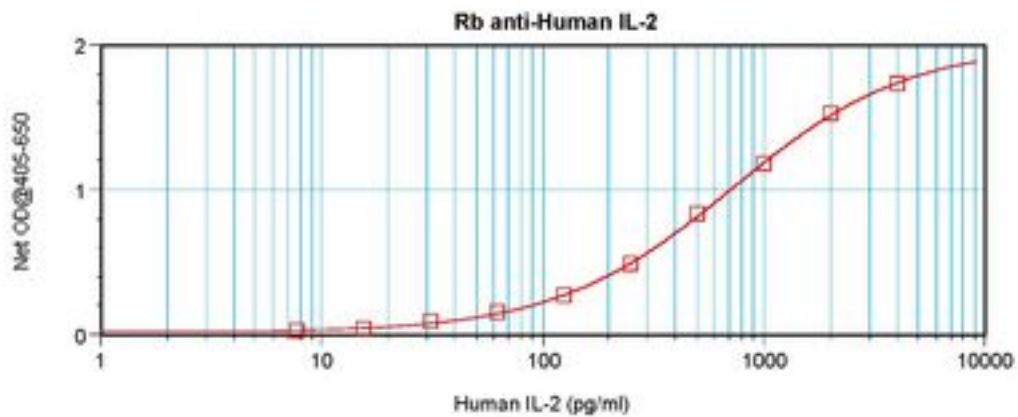
|                             |   |
|-----------------------------|---|
| <b>CatalogID:</b>           | LS-B7438  |
| <b>Validation:</b>          | This antibody replaces catalog number LS-C104619. It has been validated for use in the following assays: IHC-P.   |
| <b>Target:</b>              | interleukin 2 (IL2)   |
| <b>Synonyms:</b>            | IL2 Antibody, Aldesleukin Antibody, Interleukin 2 Antibody, Lymphokine Antibody, IL-2 Antibody, Interleukin-2 Antibody, TCGF Antibody, T cell growth factor Antibody, T-cell growth factor Antibody   |
| <b>Family / Subfamily:</b>  | Interleukin   |
| <b>Host</b>                 | IL2 antibody was produced in Rabbit   |
| <b>Clonality:</b>           | Polyclonal  |
| <b>Isotype:</b>             | IgG   |
| <b>Immunogen Species:</b>   | IL2 antibody was raised against Human   |
| <b>Antigen Type:</b>        | Cell extract  |
| <b>Immunogen:</b>           | IL2 antibody was raised against e.coli derived recombinant Human IL-2.  |
| <b>Specificity:</b>         | Human IL-2  |
| <b>Reactivity:</b>          | Human   |
| <b>Purification:</b>        | Immunoaffinity purified   |
| <b>Reconstitution:</b>      | Sterile water. Possible additional volumes for resuspension: 50 µl  |
| <b>Presentation:</b>        | Lyophilized from PBS, pH 7.2  |
| <b>Recommended Storage:</b> | Store Lyophilized at room temperature up to 1 month; Reconstituted for up to two weeks at 2-8°C. Aliquot and freeze at -20°C for long term storage. Avoid freeze/thaw cycles.   |
| <b>Usage Summary:</b>       | Immunohistochemistry: LS-B7438 in an IHC-plus antibody, validated by our pathologists for use in IHC against formalin-fixed, paraffin-embedded human tissues (IHC validation procedure). A concentration of 5 µg/ml is recommended. Neutralization: To yield one-half maximal inhibition [ND] of the biological activity of hIL-2 (0.8 ng/ml), a concentration of 0.26-0.40 µg/ml of this antibody is required. ELISA: To detect hIL-2 by sandwich ELISA (using 100 µl/well antibody solution) a concentration of 0.5-2 µg/ml of this antibody is required. This antigen affinity purified antibody, in conjunction with Biotinylated Anti-Human IL-2 (LS-C104522) as a detection antibody, allows the detection of at least 0.2-0.4 ng/well of recombinant hIL-2. Western Blot: To detect hIL-2 by Western Blot analysis this antibody can be used at a concentration of 0.1-0.2 µg/ml. Used in conjunction with compatible secondary reagents the detection limit for recombinant hIL-2 is 1.5-3 ng/lane, under either reducing or non-reducing conditions. |
| <b>Uses:</b>                | IHC - Paraffin (5 µg/ml), Western blot (0.1 - 0.2 µg/ml), ELISA (0.5 - 2 µg/ml), Neutralization (0.26 - 0.4 µg/ml) (Optimal dilution to be determined by the researcher)  |
| <b>Size:</b>                | 50 µg   |
| <b>Concentration:</b>       | 1 mg/ml (after resuspension)  |

**Immunohistochemistry Image:**



Anti-IL-2 antibody IHC of human thymus. Immunohistochemistry of formalin-fixed, paraffin-embedded tissue after heat-induced antigen retrieval. Antibody LS-B7438 concentration 5 ug/ml.

**ELISA Image:**



Sandwich ELISA of IL-2 antibody LS-B7438

**Requested From:**

Japan

Laboratory Reagent For In Vitro Research Use Only

Not for resale without prior written consent from LifeSpan BioSciences, Inc.

Created on 9/24/2014

© 2014 LifeSpan BioSciences