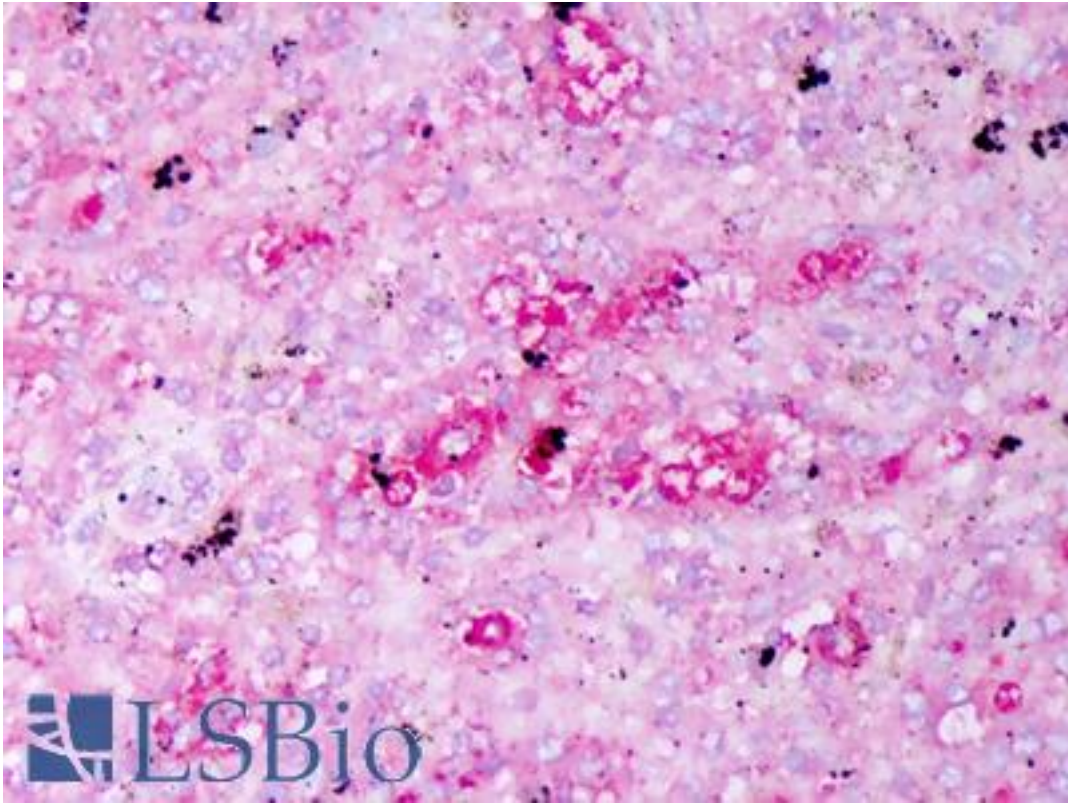


IL10 Rabbit anti-Human Polyclonal Antibody - LS-B7432 - LSBio

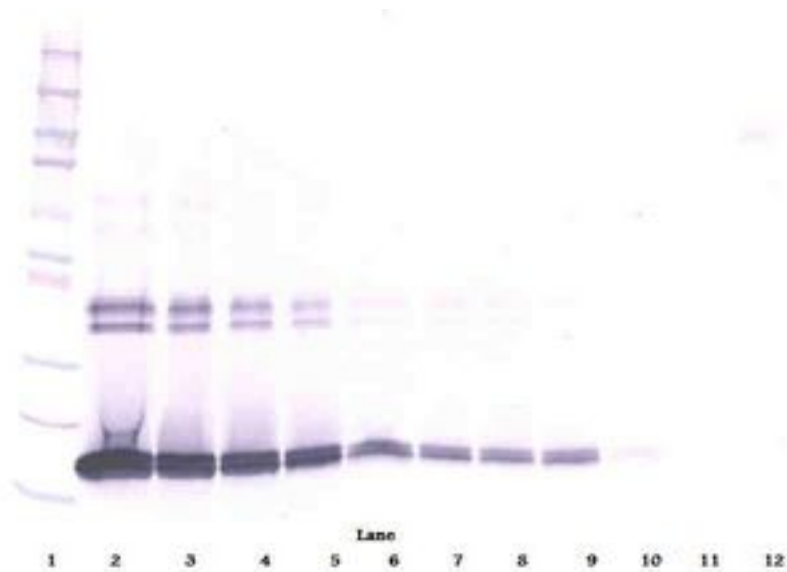
CatalogID:	LS-B7432
Validation:	This antibody replaces catalog number LS-C104292. It has been validated for use in the following assays: IHC-P.
Target:	interleukin 10 (IL10)
Synonyms:	IL10 Antibody, CSIF Antibody, GVHDS Antibody, IL-10 Antibody, IL10A Antibody, Interleukin-10 Antibody, Interleukin 10 Antibody, TGIF Antibody
Family / Subfamily:	Hormone / not assigned-Hormone
Host	IL10 antibody was produced in Rabbit
Clonality:	Polyclonal
Isotype:	IgG
Immunogen Species:	IL10 antibody was raised against Human
Antigen Type:	Cell extract
Immunogen:	IL10 antibody was raised against e.coli derived recombinant Human IL-10.
Specificity:	Human IL-10
Reactivity:	Human
Purification:	Immunoaffinity purified
Reconstitution:	Sterile water. Possible additional volumes for resuspension: 50 µl
Presentation:	Lyophilized from PBS, pH 7.2
Recommended Storage:	Store Lyophilized at room temperature up to 1 month; Reconstituted for up to two weeks at 2-8°C. Aliquot and freeze at -20°C for long term storage. Avoid freeze/thaw cycles.
Usage Summary:	<p>Immunohistochemistry: LS-B7432 in an IHC-plus antibody, validated by our pathologists for use in IHC against formalin-fixed, paraffin-embedded human tissues (IHC validation procedure). A concentration of 5 µg/ml is recommended.</p> <p>Neutralization: To yield one-half maximal inhibition [ND] of the biological activity of hIL-10 (1 ng/ml), a concentration of 1.2-1.8 µg/ml of this antibody is required.</p> <p>ELISA: To detect hIL-10 by sandwich ELISA (using 100 µl/well antibody solution) a concentration of 0.5-2 µg/ml of this antibody is required. This antigen affinity purified antibody, in conjunction with Biotinylated Anti-Human IL-10 (LS-C104321) as a detection antibody, allows the detection of at least 0.2-0.4 ng/well of recombinant hIL-10. Western Blot: To detect hIL-10 by Western Blot analysis this antibody can be used at a concentration with compatible secondary reagents the detection limit for recombinant hIL-10 is 1.5-3 ng/lane, under either reducing or non-reducing conditions.</p>
Uses:	IHC - Paraffin (5 µg/ml), Western blot (0.1 - 0.2 µg/ml), ELISA (0.5 - 2 µg/ml), Neutralization (Optimal dilution to be determined by the researcher)
Size:	50 µg
Concentration:	1 mg/ml (after resuspension)

Immunohistochemistry Image:



Anti-IL-10 antibody IHC of human spleen, macrophages. Immunohistochemistry of formalin-fixed, paraffin-embedded tissue after heat-induced antigen retrieval. Antibody LS-B7432 concentration 5 ug/ml.

Western Blot Image:



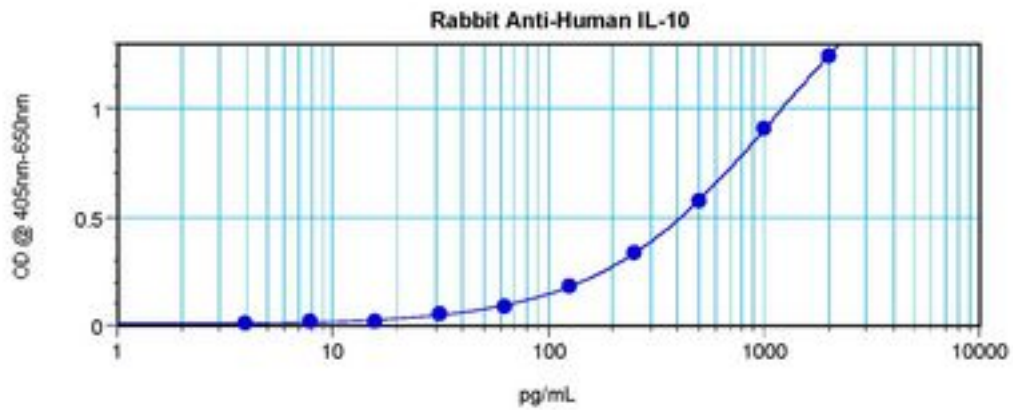
Western Blot (reducing) of IL-10 antibody LS-B7432

Western Blot Image:



Western Blot (non-reducing) of IL-10 antibody LS-B7432

ELISA Image:



Sandwich ELISA of IL-10 antibody LS-B7432

Requested From:

Japan

Laboratory Reagent For In Vitro Research Use Only

Not for resale without prior written consent from LifeSpan BioSciences, Inc.

Created on 9/24/2014

© 2014 LifeSpan BioSciences