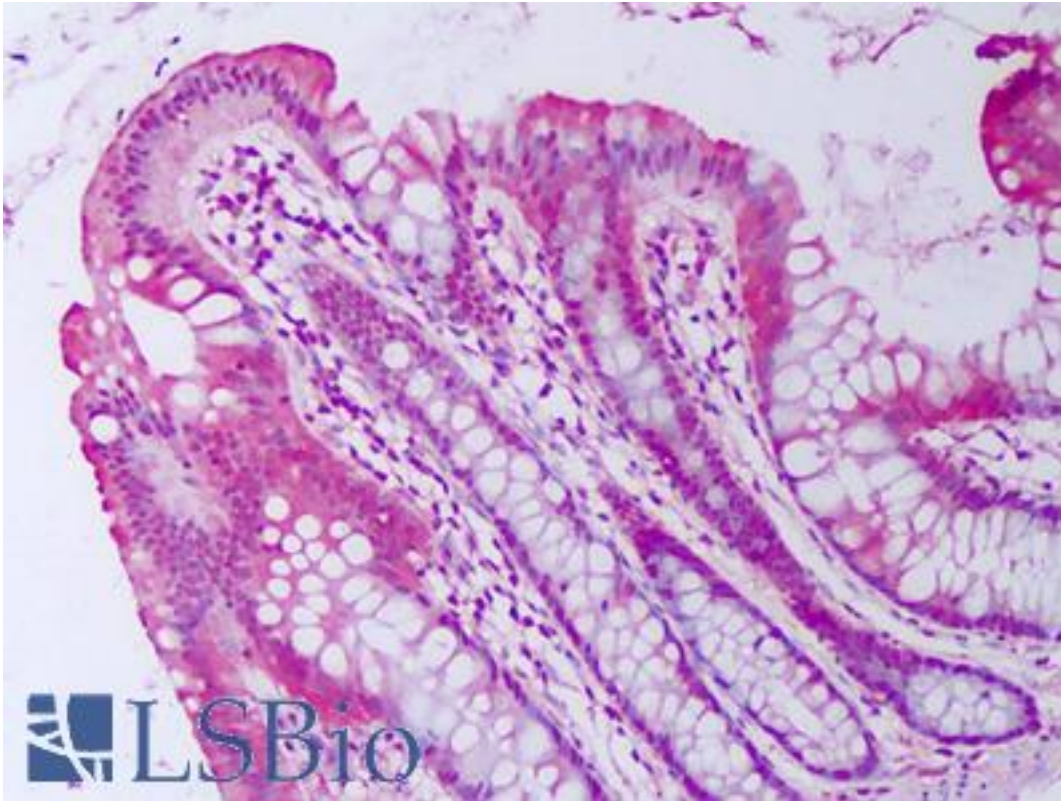


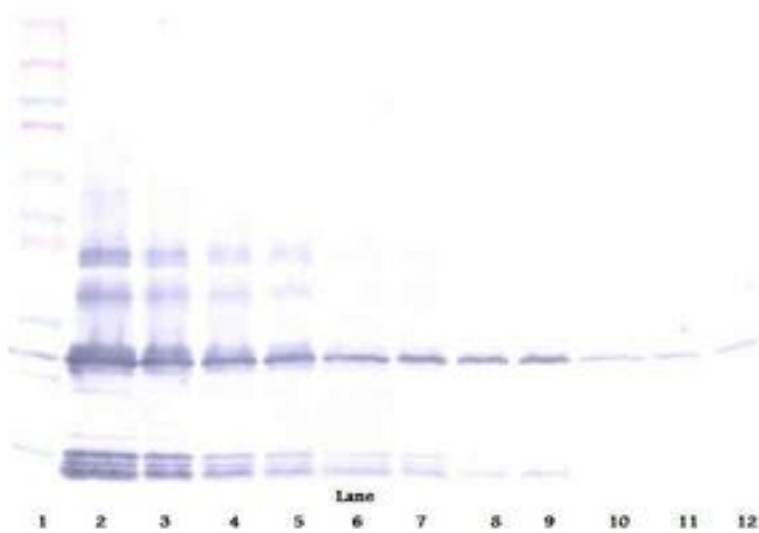
BMP2 / BMP-2 Rabbit anti-Human Polyclonal Antibody - LS-B7430 - LSBio	
CatalogID:	LS-B7430
Validation:	This antibody replaces catalog number LS-C104476. It has been validated for use in the following assays: IHC-P.
Target:	bone morphogenetic protein 2 (BMP2)
Synonyms:	BMP2 Antibody, BDA2 Antibody, BMP-2 Antibody, BMP-2A Antibody, BMP2A Antibody, Bone morphogenetic protein 2 Antibody, Bone morphogenetic protein 2A Antibody
Family / Subfamily:	TGF beta / not assigned-TGF beta
Host	BMP2 antibody was produced in Rabbit
Clonality:	Polyclonal
Isotype:	IgG
Immunogen Species:	BMP2 / BMP-2 antibody was raised against Human
Antigen Type:	Cell extract
Immunogen:	BMP2 / BMP-2 antibody was raised against e.coli derived recombinant Human BMP-2.
Specificity:	Human BMP-2
Reactivity:	Human
Purification:	Immunoaffinity purified
Reconstitution:	Reconstitute in sterile water
Presentation:	Lyophilized from PBS, pH 7.2
Recommended Storage:	Store Lyophilized at room temperature up to 1 month; Reconstituted for up to two weeks at 2-8°C. Aliquot and freeze at -20°C for long term storage. Avoid freeze/thaw cycles.
Usage Summary:	Immunohistochemistry: LS-B7430 in an IHC-plus antibody, validated by our pathologists for use in IHC against formalin-fixed, paraffin-embedded human tissues (IHC validation procedure). A concentration of 5 ug/ml is recommended. Neutralization: To yield one-half maximal inhibition [ND] of the biological activity of hBMP-2 (200 ng/ml), a concentration of 1.3-1.9 ug/ml of this antibody is required. ELISA: To detect hBMP-2 by sandwich ELISA (using 100 ul/well antibody solution) a concentration of 0.5-2 ug/ml of this antibody is required. This antigen affinity purified antibody, in conjunction with Biotinylated Anti-Human BMP-2 (LS-C104469) as a detection antibody, allows the detection of at least 0.2-0.4 ng/well of recombinant hBMP-2. Western Blot: To detect hBMP-2 by Western Blot analysis this antibody can be used at a concentration of 0.1-0.2 ug/ml. Used in conjunction with compatible secondary reagents the detection limit for recombinant hBMP-2 is 1.5-3 ng/lane, under either reducing or non-reducing conditions.
Uses:	IHC - Paraffin (5 µg/ml), Western blot (0.1 - 0.2 µg/ml), ELISA (0.5 - 2 µg/ml), Neutralization (1.3 - 1.9 µg/ml) (Optimal dilution to be determined by the researcher)
Size:	50 µg

Immunohistochemistry Image:



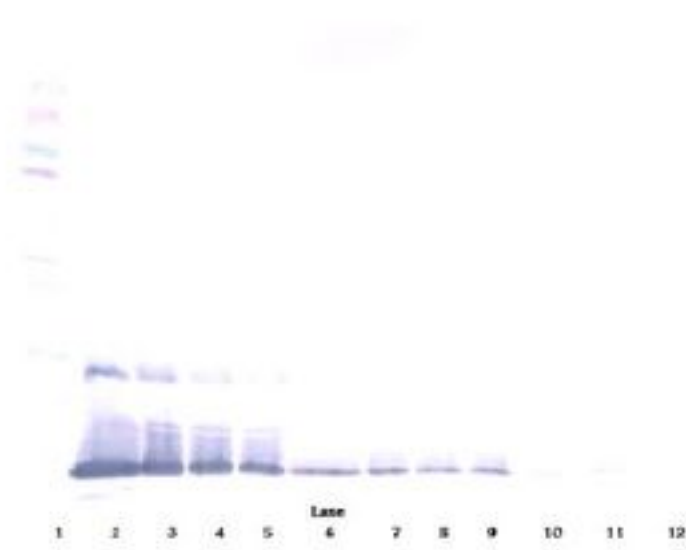
Anti-BMP2 antibody IHC of human colon, epithelium. Immunohistochemistry of formalin-fixed, paraffin-embedded tissue after heat-induced antigen retrieval. Antibody LS-B7430 concentration 5 ug/ml.

Western Blot Image:



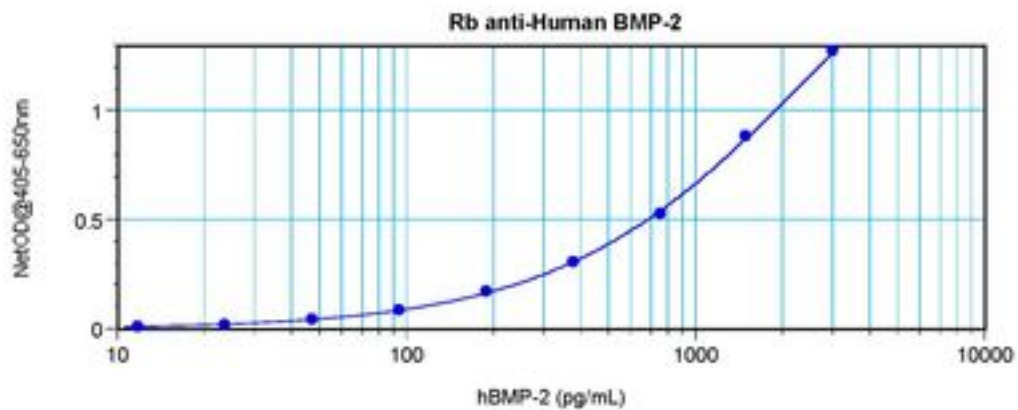
Western Blot (non-reducing) of BMP2 antibody LS-B7430

Western Blot Image:



Western Blot (reducing) of BMP2 antibody LS-B7430

ELISA Image:



Sandwich ELISA of BMP2 antibody LS-B7430

Requested From:

Japan

Laboratory Reagent For In Vitro Research Use Only

Not for resale without prior written consent from LifeSpan BioSciences, Inc.

Created on 9/24/2014

© 2014 LifeSpan BioSciences