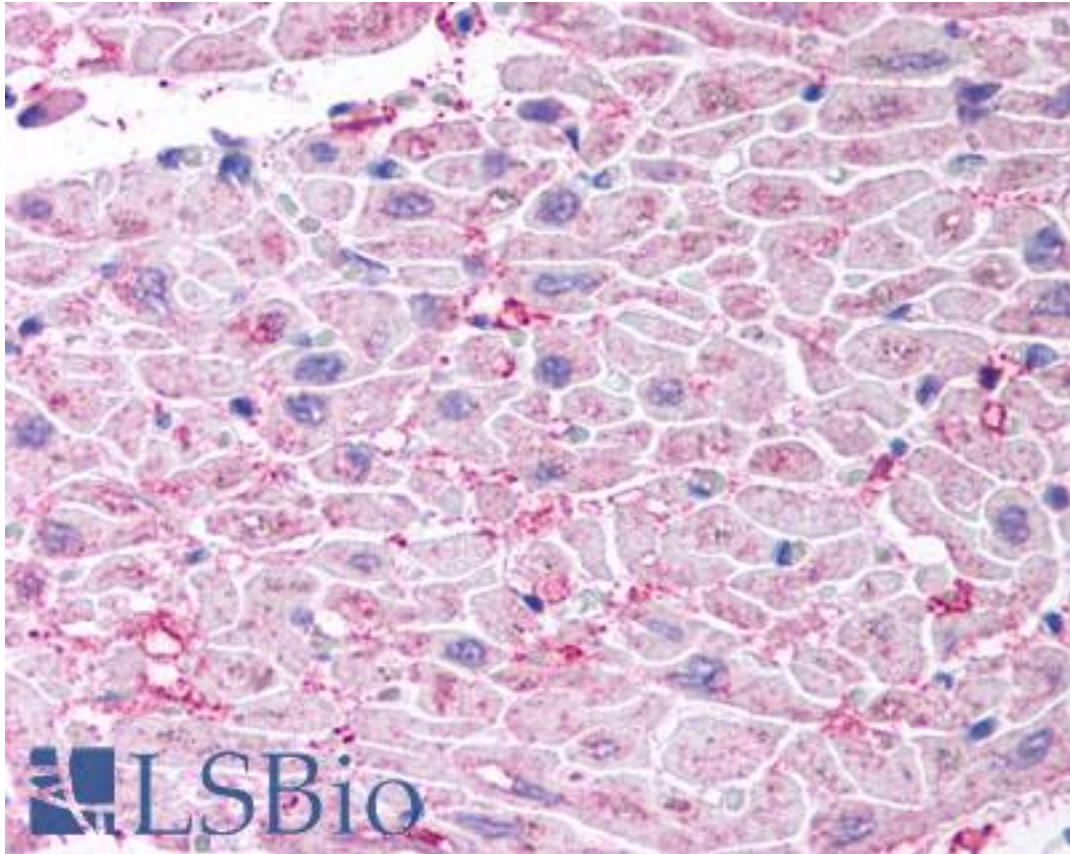


APAF1 / APAF-1 Rabbit anti-Human Polyclonal (aa12-28) Antibody - LS-B743 - LSBio

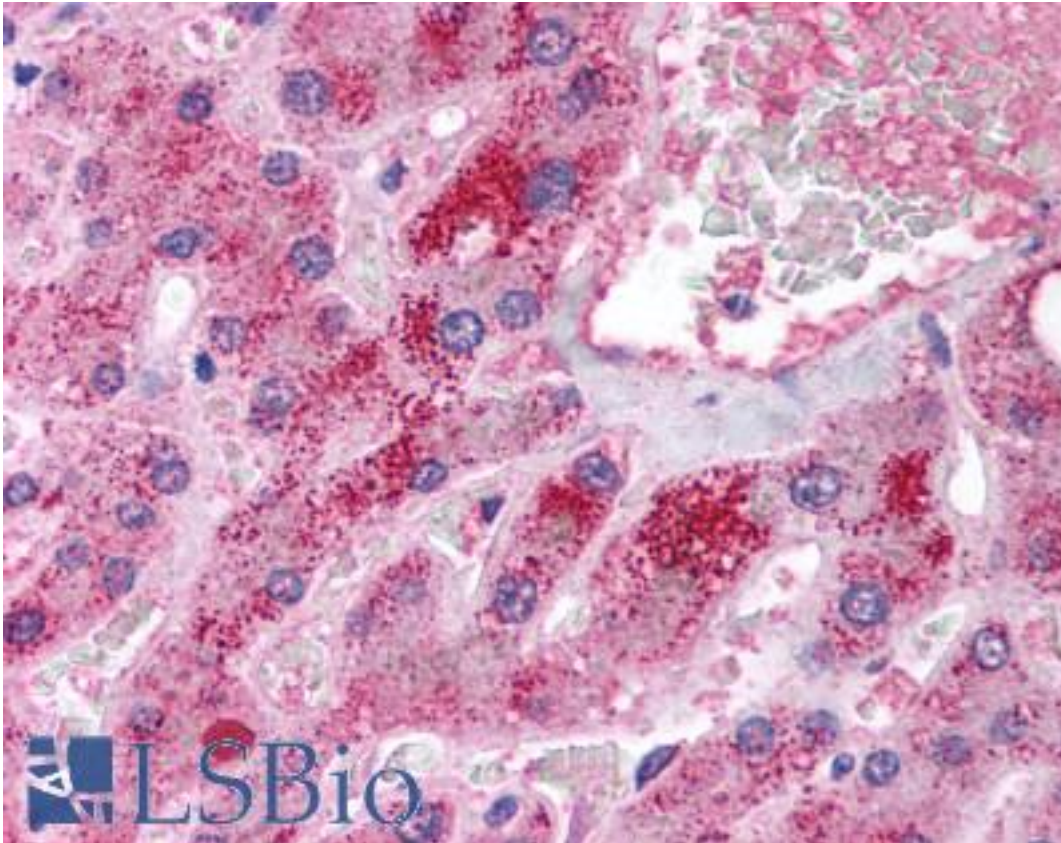
CatalogID:	LS-B743
Validation:	This antibody replaces catalog number LS-C26610. It has been validated for use in the following assays: IHC.
Target:	apoptotic peptidase activating factor 1 (APAF1)
Synonyms:	APAF1 Antibody, APAF-1 Antibody, CED4 Antibody, KIAA0413 Antibody
Family / Subfamily:	Apoptosis / Not assigned-Other
Host	APAF1 antibody was produced in Rabbit
Clonality:	Polyclonal
Immunogen Species:	APAF1 / APAF-1 antibody was raised against Human
Antigen Type:	Synthetic peptide
Immunogen:	APAF1 / APAF-1 antibody was raised against synthetic peptide corresponding to amino acids 12 to 28 of the human Apaf-1 protein. The immunogen sequence is identical in human and mouse.
Specificity:	Amino acids 12 to 28 of human APAF1
Epitope:	aa12-28
Reactivity:	Human, Mouse, Rat
Purification:	Purified
Presentation:	PBS, 0.02% sodium azide.
Recommended Storage:	+4°C, avoid freezing
Usage Summary:	Immunohistochemistry: LS-B743 was validated for use in immunohistochemistry on a panel of 21 formalin-fixed, paraffin-embedded (FFPE) human tissues after heat induced antigen retrieval in pH 6.0 citrate buffer. After incubation with the primary antibody, slides were incubated with biotinylated secondary antibody, followed by alkaline phosphatase-streptavidin and chromogen. The stained slides were evaluated by a pathologist to confirm staining specificity. The optimal working concentration for LS-B743 was determined to be 20 ng/ml.
Uses:	IHC - Paraffin (20 µg/ml), Western blot (Optimal dilution to be determined by the researcher)
Size:	50 µg
Concentration:	0.5 mg/ml

Immunohistochemistry Image:



Anti-APAF1 / APAF-1 antibody IHC of human heart. Immunohistochemistry of formalin-fixed, paraffin-embedded tissue after heat-induced antigen retrieval. Antibody LS-B743 concentration 20 ug/ml.

Immunohistochemistry Image:



Anti-APAF1 / APAF-1 antibody IHC of human liver. Immunohistochemistry of formalin-fixed, paraffin-embedded tissue after heat-induced antigen retrieval. Antibody LS-B743 concentration 20 ug/ml.

Requested From:

Japan

Laboratory Reagent For In Vitro Research Use Only

Not for resale without prior written consent from LifeSpan BioSciences, Inc.

Created on 9/24/2014

© 2014 LifeSpan BioSciences