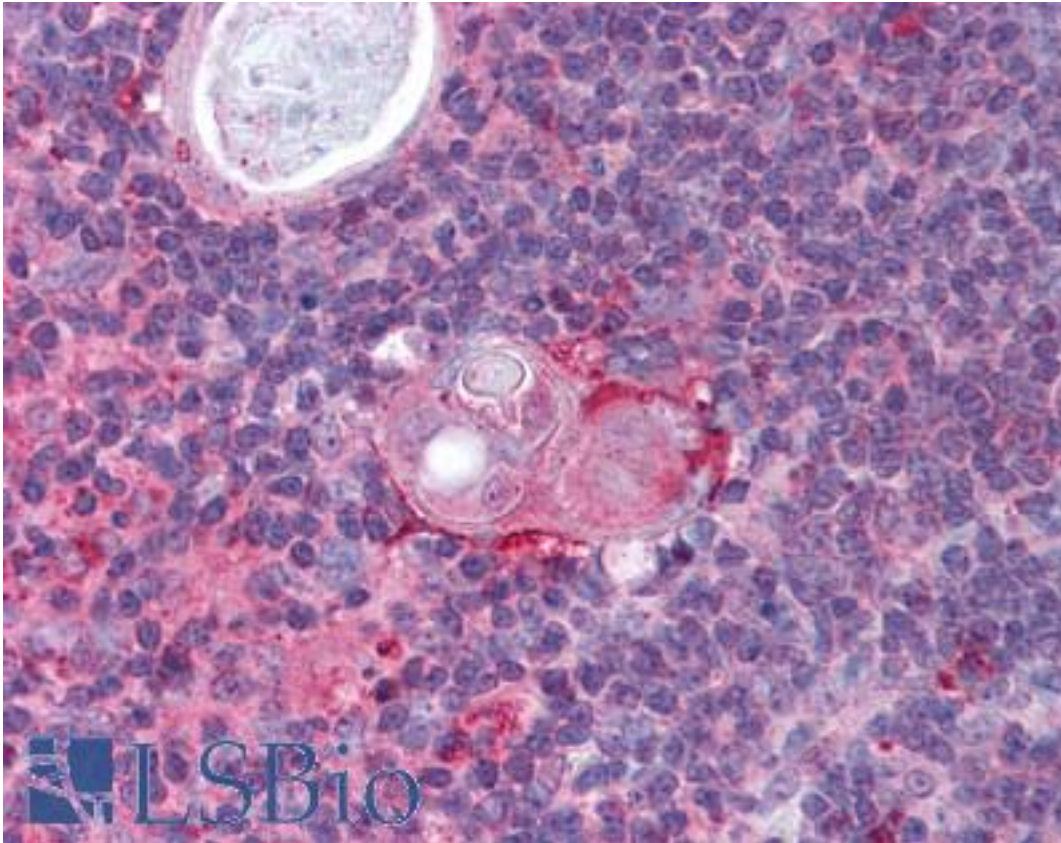


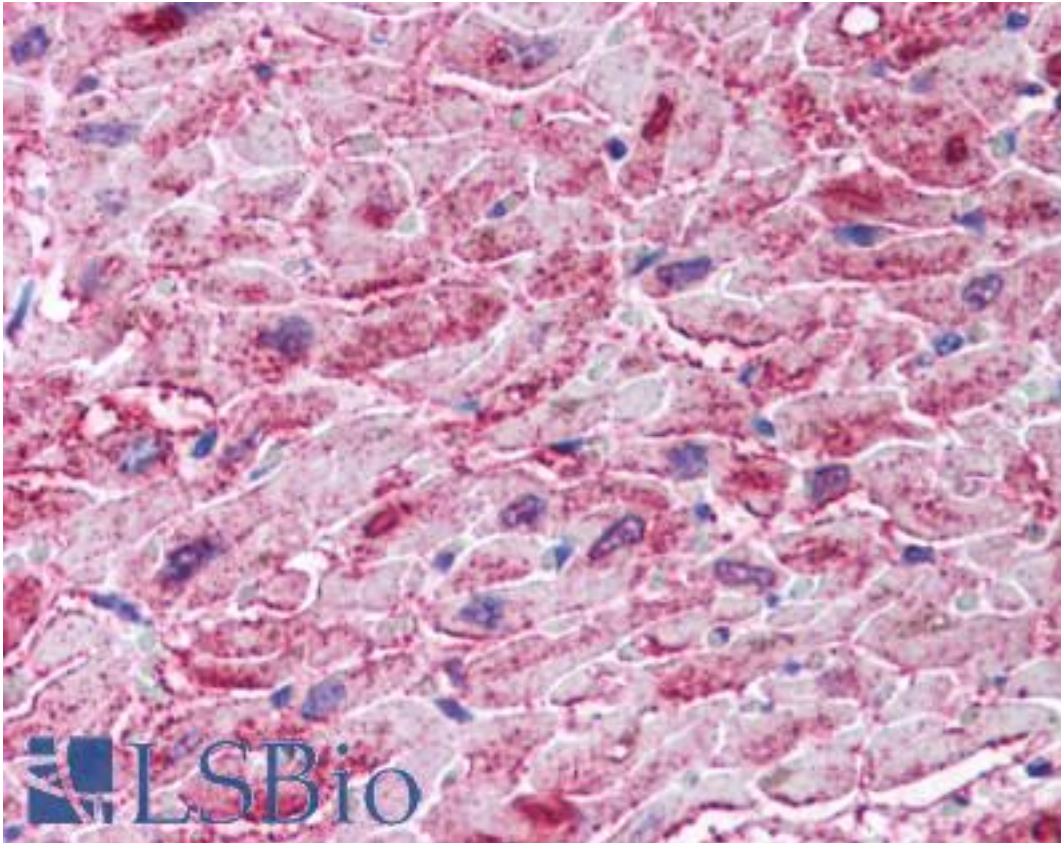
IKBKB / IKK2 / IKK Beta Chicken anti-Human Polyclonal (aa310-376) Antibody - LS-B742 - LSBio	
CatalogID:	LS-B742
Validation:	This antibody replaces catalog number LS-C32139. It has been validated for use in the following assays: IHC.
Target:	inhibitor of kappa light polypeptide gene enhancer in B-cells, kinase beta (IKBKB)
Synonyms:	IKBKB Antibody, Ikk 2 Antibody, IKK-B Antibody, IKK2 Antibody, IKKbeta Antibody, NFKB1KB Antibody, I-kappa-B kinase 2 Antibody, IKKB Antibody, I-kappa-B-kinase beta Antibody, Ikb kinase-beta Antibody, IKK Beta Antibody, IKK-beta Antibody
Family / Subfamily:	Protein Kinase / IKAPPAB
Host	IKBKB antibody was produced in Chicken
Clonality:	Polyclonal
Isotype:	IgY
Immunogen Species:	IKBKB / IKK2 / IKK Beta antibody was raised against Human
Immunogen:	IKBKB / IKK2 / IKK Beta antibody was raised against recombinant human IKBKB / IKK Beta.
Specificity:	Amino acids 310-376 of human IKBKB
Epitope:	aa310-376
Reactivity:	Human, Mouse, Rat
Purification:	Immunoaffinity purified
Presentation:	PBS. No preservative added.
Recommended Storage:	Long term: -20°C; Short term: +4°C. Avoid repeat freeze-thaw cycles.
Usage Summary:	Immunohistochemistry: LS-B742 was validated for use in immunohistochemistry on a panel of 21 formalin-fixed, paraffin-embedded (FFPE) human tissues after heat induced antigen retrieval in pH 6.0 citrate buffer. After incubation with the primary antibody, slides were incubated with biotinylated secondary antibody, followed by alkaline phosphatase-streptavidin and chromogen. The stained slides were evaluated by a pathologist to confirm staining specificity. The optimal working concentration for LS-B742 was determined to be 2.5 ug/ml.
Uses:	IHC - Paraffin (2.5 µg/ml), Western blot (Optimal dilution to be determined by the researcher)
Size:	50 µg

Immunohistochemistry Image:



Anti-IKBKB / IKK Beta antibody IHC of human thymus. Immunohistochemistry of formalin-fixed, paraffin-embedded tissue after heat-induced antigen retrieval. Antibody LS-B742 concentration 5 ug/ml.

Immunohistochemistry Image:



Anti-IKBKB / IKK Beta antibody IHC of human heart. Immunohistochemistry of formalin-fixed, paraffin-embedded tissue after heat-induced antigen retrieval. Antibody LS-B742 concentration 5 ug/ml.

Requested From:

Japan

Laboratory Reagent For In Vitro Research Use Only

Not for resale without prior written consent from LifeSpan BioSciences, Inc.

Created on 9/24/2014

© 2014 LifeSpan BioSciences