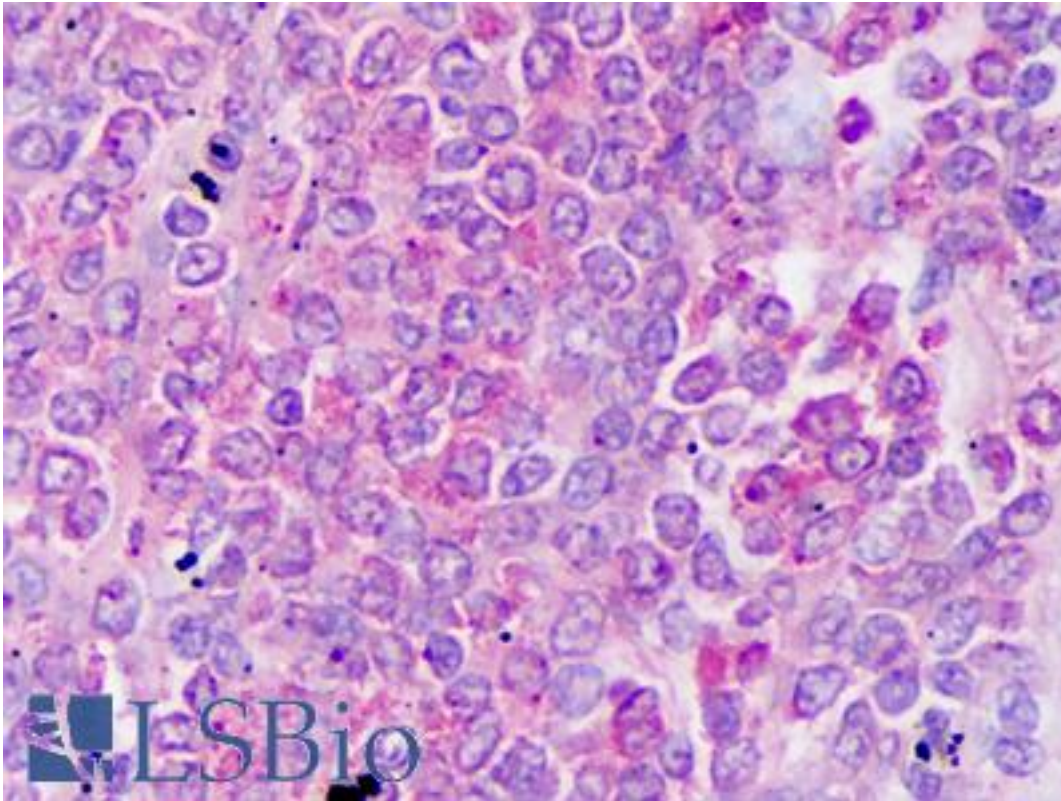


CCL20 / MIP-3-Alpha Mouse anti-Human Monoclonal Antibody - LS-B7409 - LSBio

CatalogID:	LS-B7409
Validation:	This antibody replaces catalog number LS-C104419. It has been validated for use in the following assays: IHC-P.
Target:	chemokine (C-C motif) ligand 20 (CCL20)
Synonyms:	CCL20 Antibody, Beta chemokine exodus-1 Antibody, Beta-chemokine exodus-1 Antibody, CKb4 Antibody, Exodus-1 Antibody, MIP-3a Antibody, MIP-3-alpha Antibody, LARC Antibody, ST38 Antibody, SCYA20 Antibody, C-C motif chemokine 20 Antibody, CC chemokine LARC Antibody, Mip-3alpha Antibody, MIP3A Antibody, Small-inducible cytokine A20 Antibody
Family / Subfamily:	Interocrine / Interocrine beta
Host	CCL20 antibody was produced in Mouse
Clonality:	Monoclonal
Isotype:	IgG1,k
Immunogen Species:	CCL20 / MIP-3-Alpha antibody was raised against Human
Antigen Type:	Cell extract
Immunogen:	CCL20 / MIP-3-Alpha antibody was raised against e.coli derived recombinant Human MIP-3alpha.
Specificity:	Human MIP-3alpha
Reactivity:	Human
Purification:	Protein A purified
Reconstitution:	500 ul sterile water
Presentation:	Lyophilized from PBS. Sourced in TCS.
Recommended Storage:	Store Lyophilized at room temperature up to 1 month; Reconstituted for up to two weeks at 2-8°C. Aliquot and freeze at -20°C for long term storage. Avoid freeze/thaw cycles.
Usage Summary:	Immunohistochemistry: LS-B7409 in an IHC-plus antibody, validated by our pathologists for use in IHC against formalin-fixed, paraffin-embedded human tissues (IHC validation procedure). A concentration of 10 ug/ml is recommended. ELISA: In a sandwich ELISA (assuming 100 ul/well), a concentration of 2-4 ug/ml of this antibody will detect at least 1000 pg/ml of recombinant Human MIP-3alpha when used with biotinylated antigen affinity purified anti-Human MIP-3alpha (LS-C104612) as the detection antibody at a concentration of approximately 1-2 ug/ml. Western Blot: To detect Human MIP-3alpha by Western Blot analysis this antibody can be used at a concentration of 0.20-0.40 ug/ml. When used in conjunction with compatible secondary reagents, the detection limit for recombinant Human MIP-3alpha is 0.25-0.50 ng/lane, under non-reducing conditions.
Uses:	IHC - Paraffin (10 µg/ml), Western blot (0.2 - 0.4 µg/ml), ELISA (2 - 4 µg/ml) (Optimal dilution to be determined by the researcher)
Size:	500 µg
Concentration:	1 mg/ml (after resuspension)

Immunohistochemistry Image:



Anti-CCL20 antibody IHC of human spleen, lymphocytes. Immunohistochemistry of formalin-fixed, paraffin-embedded tissue after heat-induced antigen retrieval. Antibody LS-B7409 concentration 10 ug/ml.

Requested From:

Japan

Laboratory Reagent For In Vitro Research Use Only

Not for resale without prior written consent from LifeSpan BioSciences, Inc.

Created on 9/24/2014

© 2014 LifeSpan BioSciences