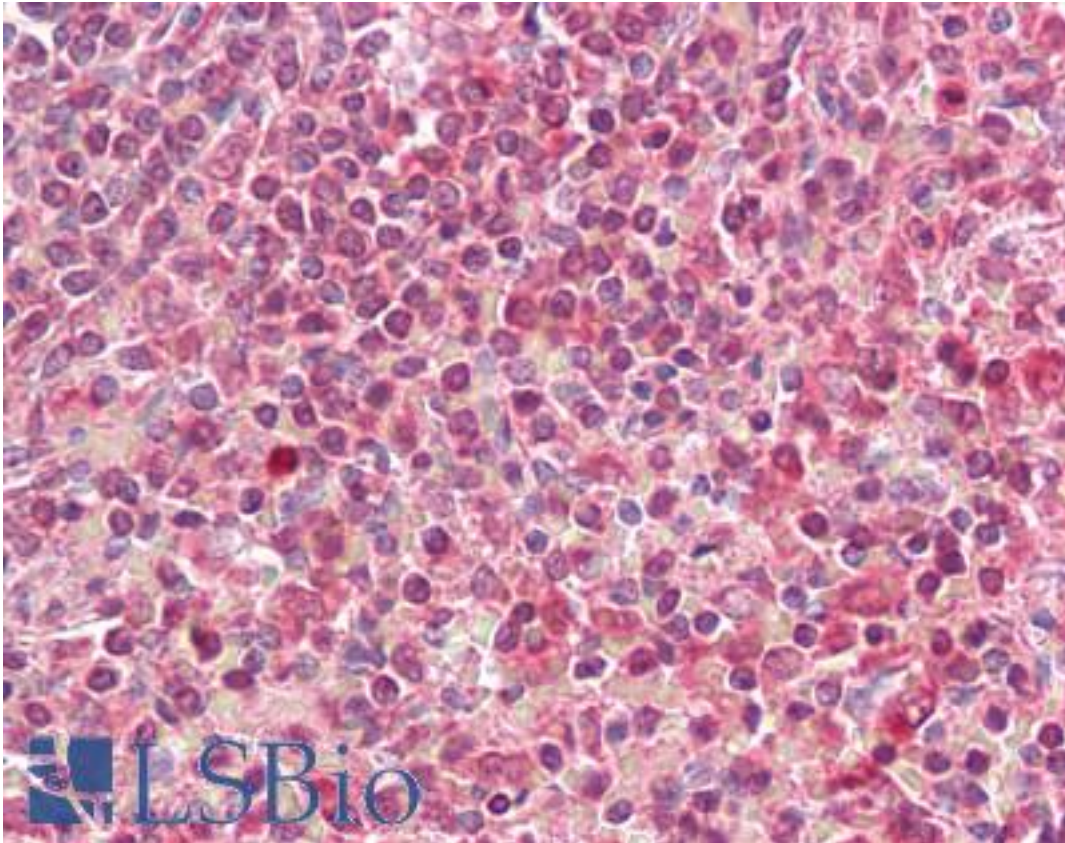


HLA-DQA2 Goat anti-Human Polyclonal (Internal) Antibody - LS-B7406 - LSBio

CatalogID:	LS-B7406
Validation:	This antibody replaces catalog number LS-C139657. It has been validated for use in the following assays: IHC-P.
Target:	major histocompatibility complex, class II, DQ alpha 2 (HLA-DQA2)
Synonyms:	HLA-DQA2 Antibody, DX-ALPHA Antibody, DX alpha chain Antibody, MHC class II DQA2 Antibody, HLA-DXA Antibody
Host	HLA-DQA2 antibody was produced in Goat
Clonality:	Polyclonal
Immunogen Species:	HLA-DQA2 antibody was raised against Human
Antigen Type:	Synthetic peptide
Immunogen:	HLA-DQA2 antibody was raised against synthetic peptide C-QSHGPSGQYTH from an internal region of human HLA-DQA2 (NP_064440.1). Percent identity by BLAST analysis: Human, Gorilla, Sheep, Goat, Bovine (100%); Chimpanzee, Zebu (91%).
Specificity:	Human HLA-DQA2.
Epitope:	Internal
Reactivity:	Human, Gorilla, Bovine, Goat, Sheep
Predicted Reactivity:	Chimpanzee
Purification:	Immunoaffinity purified
Presentation:	Tris-buffered saline, pH 7.3, 0.5% BSA, 0.02% sodium azide
Recommended Storage:	Store at -20°C. Minimize freezing and thawing.
Usage Summary:	Peptide ELISA: antibody detection limit dilution 1:16000. Western blot: Preliminary experiments gave bands at approx 35kD and 24kD in Human Lymph Node and Tonsil lysates after 1 ug/ml antibody staining. Please note that currently we cannot find an explanation in the literature for the bands we observe given the calculated size of 28.0kD according to NP_064440.1. Both detected bands were successfully blocked by incubation with the immunizing peptide (and BLAST results with the immunizing peptide sequence did not identify any other proteins to explain the additional bands).
Uses:	IHC - Paraffin (3.75 µg/ml), ELISA (1:16000) (Optimal dilution to be determined by the researcher)
Size:	50 µg
Concentration:	0.5 mg/ml

Immunohistochemistry Image:



Anti-HLA-DQA2 antibody IHC of human spleen. Immunohistochemistry of formalin-fixed, paraffin-embedded tissue after heat-induced antigen retrieval. Antibody LS-B7406 concentration 3.75 ug/ml.

Requested From:

Japan

Laboratory Reagent For In Vitro Research Use Only

Not for resale without prior written consent from LifeSpan BioSciences, Inc.

Created on 9/24/2014

© 2014 LifeSpan BioSciences