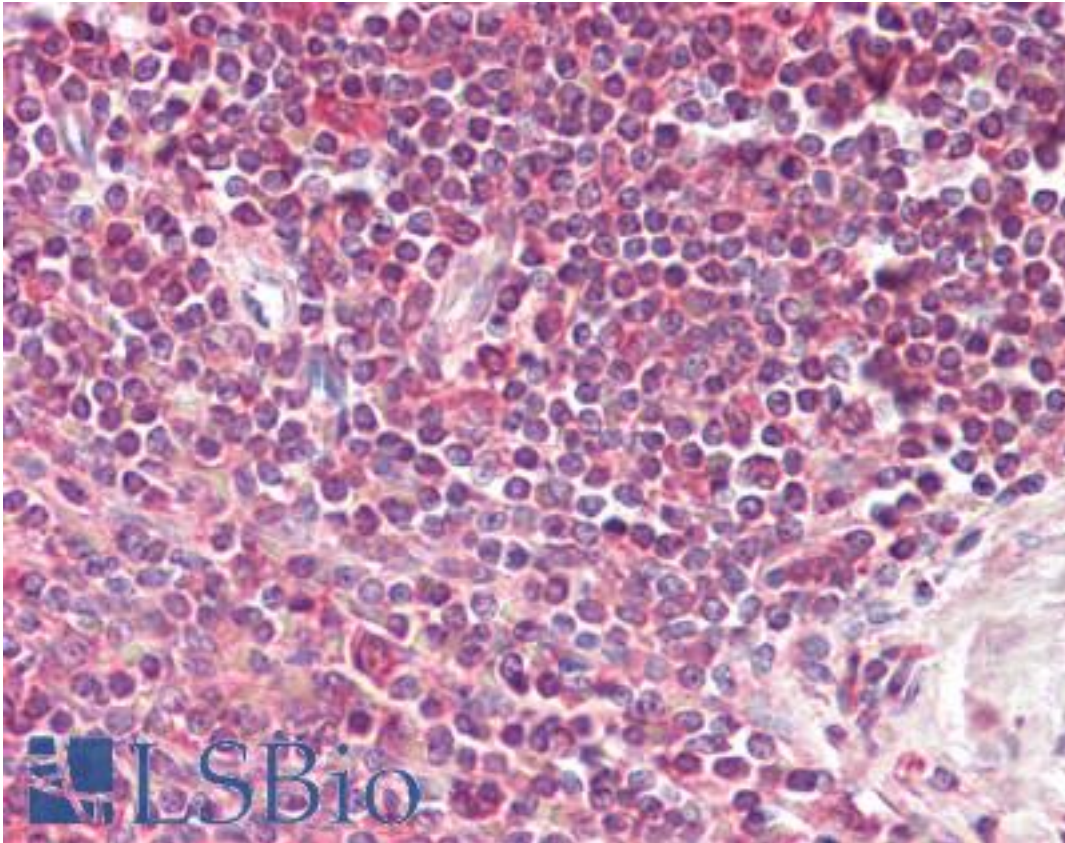


| LIMS2 Goat anti-Human Polyclonal (Internal) Antibody - LS-B7405 - LSBio |  |
|---|--|
| <b>CatalogID:</b>   | LS-B7405   |
| <b>Validation:</b>  | This antibody replaces catalog number LS-C139655. It has been validated for use in the following assays: IHC-P.  |
| <b>Target:</b>  | LIM And Senescent Cell Antigen-like Domains 2 (LIMS2)  |
| <b>Synonyms:</b>  | LIMS2 Antibody, PINCH2 Antibody, PINCH-2 Antibody, LIM-like protein 2 Antibody, ILK-binding protein Antibody   |
| <b>Host</b>   | LIMS2 antibody was produced in Goat  |
| <b>Clonality:</b>   | Polyclonal   |
| <b>Immunogen Species:</b>   | LIMS2 antibody was raised against Human  |
| <b>Antigen Type:</b>  | Synthetic peptide  |
| <b>Immunogen:</b>   | LIMS2 antibody was raised against synthetic peptide C-RWSNMSDALA from an internal region of human LIMS2 (NP_001129509.2; NP_001154875.1). Percent identity with other species by BLAST analysis: Human (100%), Marmoset (90%), Gorilla (80%), Monkey (80%), Rabbit (80%), Opossum (80%), Turkey (80%), Chicken (80%), Platypus (80%), Nectri (80%).  |
| <b>Specificity:</b>   | Human LIMS2. This antibody is expected to recognize isoform 1 (NP_001129509.2) and isoformn 3 (NP_001154875.1).  |
| <b>Epitope:</b>   | Internal   |
| <b>Reactivity:</b>  | Human  |
| <b>Predicted Reactivity:</b>  | Monkey   |
| <b>Purification:</b>  | Immunoaffinity purified  |
| <b>Presentation:</b>  | Tris-buffered saline, pH 7.3, 0.5% BSA, 0.02% sodium azide   |
| <b>Recommended Storage:</b>   | Store at -20°C. Minimize freezing and thawing.   |
| <b>Usage Summary:</b>   | Peptide ELISA: antibody detection limit dilution 1:8000. Western blot: Preliminary experiments gave an approx 80kD band in Human Heart and Mouse Heart lysates after 0.5 g/ml antibody staining. Please note that currently we cannot find an explanation in the literature for the band we observe given the calculated size of 41.2kD according to NP_001129509.2. The 80kD band was successfully blocked by incubation with the immunizing peptide. |
| <b>Uses:</b>  | IHC - Paraffin (3.75 µg/ml), ELISA (1:8000) (Optimal dilution to be determined by the researcher)  |
| <b>Size:</b>  | 50 µg  |
| <b>Concentration:</b>   | 0.5 mg/ml  |

**Immunohistochemistry Image:**



Anti-LIMS2 antibody IHC of human spleen. Immunohistochemistry of formalin-fixed, paraffin-embedded tissue after heat-induced antigen retrieval. Antibody LS-B7405 concentration 3.75 ug/ml.

**Requested From:**

Japan

Laboratory Reagent For In Vitro Research Use Only

Not for resale without prior written consent from LifeSpan BioSciences, Inc.

Created on 9/24/2014

© 2014 LifeSpan BioSciences