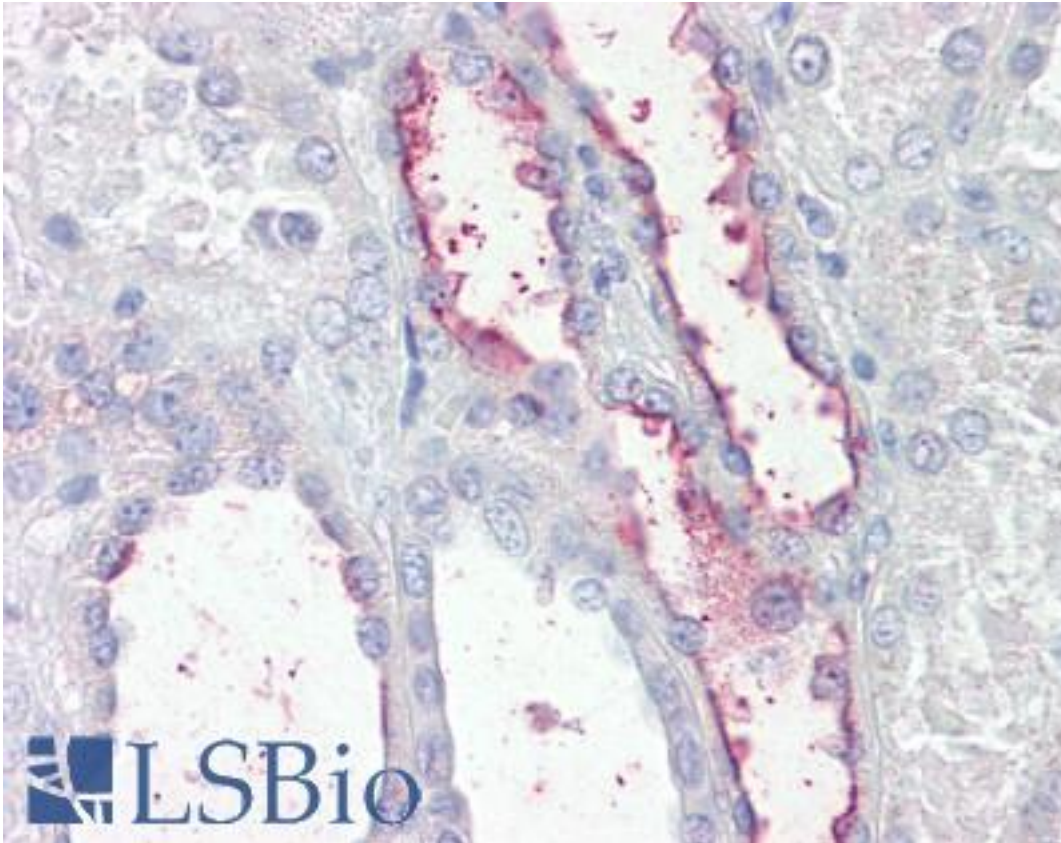


KCNE3 Goat anti-Human Polyclonal (Internal) Antibody - LS-B7398 - LSBio	
CatalogID:	LS-B7398
Validation:	This antibody replaces catalog number LS-C112972. It has been validated for use in the following assays: IHC-P.
Target:	potassium voltage-gated channel, Isk-related family, member 3 (KCNE3)
Synonyms:	KCNE3 Antibody, MinK-related peptide 2 Antibody, HOKPP Antibody, HYPP Antibody, MiRP2 Antibody
Family / Subfamily:	Ion Channel / Potassium channel - KCNE
Host	KCNE3 antibody was produced in Goat
Clonality:	Polyclonal
Immunogen Species:	KCNE3 antibody was raised against Human
Antigen Type:	Synthetic peptide
Immunogen:	KCNE3 antibody was raised against synthetic peptide C-PDNQTEERRASLP from an internal region of human KCNE3 (NP_005463.1). Percent identity by BLAST analysis: Human, Gorilla, Gibbon, Hamster (100%); Monkey, Mouse (92%); Rat, Bovine, Bat (85%).
Specificity:	Human KCNE3.
Epitope:	Internal
Reactivity:	Human, Gorilla, Gibbon, Hamster
Predicted Reactivity:	Monkey, Mouse
Purification:	Immunoaffinity purified
Presentation:	Tris-buffered saline, pH 7.3, 0.5% BSA, 0.02% sodium azide
Recommended Storage:	Store at -20°C. Minimize freezing and thawing.
Usage Summary:	Peptide ELISA: antibody detection limit dilution 1:1000. Western blot: Preliminary experiments in Human, Mouse and Rat Skeletal Muscle lysates gave no specific signal but low background (at antibody concentration up to 1 ug/ml).
Uses:	IHC - Paraffin (3.75 µg/ml), ELISA (1:1000) (Optimal dilution to be determined by the researcher)
Size:	50 µg
Concentration:	0.5 mg/ml

Immunohistochemistry Image:



Anti-KCNE3 antibody IHC of human kidney. Immunohistochemistry of formalin-fixed, paraffin-embedded tissue after heat-induced antigen retrieval. Antibody LS-B7398 concentration 3.75 ug/ml.

Requested From:

Japan

Laboratory Reagent For In Vitro Research Use Only

Not for resale without prior written consent from LifeSpan BioSciences, Inc.

Created on 9/24/2014

© 2014 LifeSpan BioSciences