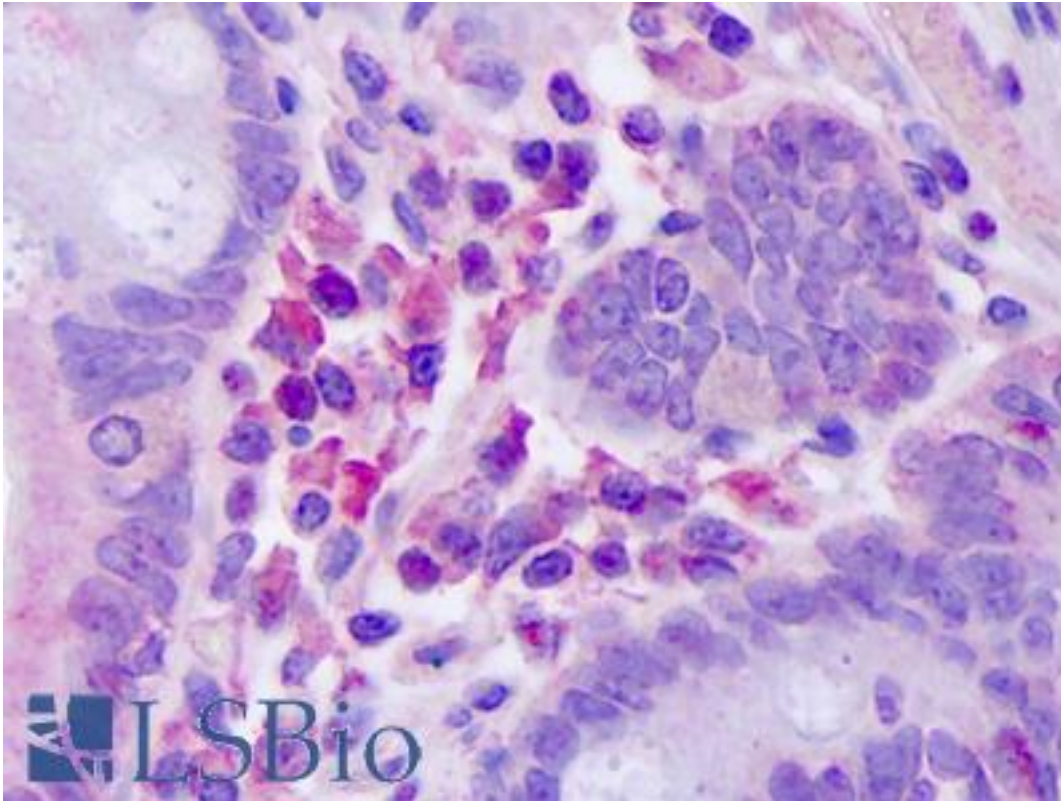


IL2RA / CD25 Mouse anti-Human Monoclonal Antibody - LS-B7396 - LSBio	
CatalogID:	LS-B7396
Validation:	This antibody replaces catalog number LS-C104460. It has been validated for use in the following assays: IHC-P.
Target:	interleukin 2 receptor, alpha (IL2RA)
Synonyms:	IL2RA Antibody, CD25 antigen Antibody, CD25 Antibody, IDDM10 Antibody, IL-2 receptor subunit alpha Antibody, IL2R Antibody, Interleukin 2 receptor, alpha Antibody, IL-2-RA Antibody, IL2-RA Antibody, TCGFR Antibody, IL-2R subunit alpha Antibody, p55 Antibody, TAC antigen Antibody
Family / Subfamily:	Interleukin
Host	IL2RA antibody was produced in Mouse
Clonality:	Monoclonal
Isotype:	IgG2a,k
Immunogen Species:	IL2RA / CD25 antibody was raised against Human
Antigen Type:	Cell extract
Immunogen:	IL2RA / CD25 antibody was raised against insect cell derived recombinant Human sIL-2Ralpha.
Specificity:	Human IL-2Ralpha
Reactivity:	Human
Purification:	Protein G purified
Reconstitution:	Reconstitute in sterile water
Presentation:	Lyophilized from PBS
Recommended Storage:	Store Lyophilized at room temperature up to 1 month; Reconstituted for up to two weeks at 2-8°C. Aliquot and freeze at -20°C for long term storage. Avoid freeze/thaw cycles.
Usage Summary:	Immunohistochemistry: LS-B7396 in an IHC-plus antibody, validated by our pathologists for use in IHC against formalin-fixed, paraffin-embedded human tissues (IHC validation procedure). A concentration of 10 ug/ml is recommended. ELISA: In a sandwich ELISA (assuming 100 ul/well), a concentration of 4-8 ug/ml of this antibody will detect at least 100 pg/ml of recombinant Human sIL-2Ralpha when used in conjunction with compatible secondary reagents. Western Blot: To detect Human sIL-2Ralpha by Western Blot analysis this antibody can be used at a concentration of 0.20-0.40 ug/ml. When used in conjunction with compatible secondary reagents the detection limit for recombinant Human sIL-2Ralpha is 2-4 ng/lane, under non-reducing conditions.
Uses:	IHC - Paraffin (10 µg/ml), IHC - Frozen (5 µg/ml), Western blot (0.2 - 0.4 µg/ml), ELISA (Optimal dilution to be determined by the researcher)
Size:	500 µg
Concentration:	1 mg/ml (after resuspension)

Immunohistochemistry Image:



Anti-CD25 antibody IHC of human plasma cells. Immunohistochemistry of formalin-fixed, paraffin-embedded tissue after heat-induced antigen retrieval. Antibody LS-B7396 concentration 10 ug/ml.

Requested From:

Japan

Laboratory Reagent For In Vitro Research Use Only

Not for resale without prior written consent from LifeSpan BioSciences, Inc.

Created on 9/24/2014

© 2014 LifeSpan BioSciences