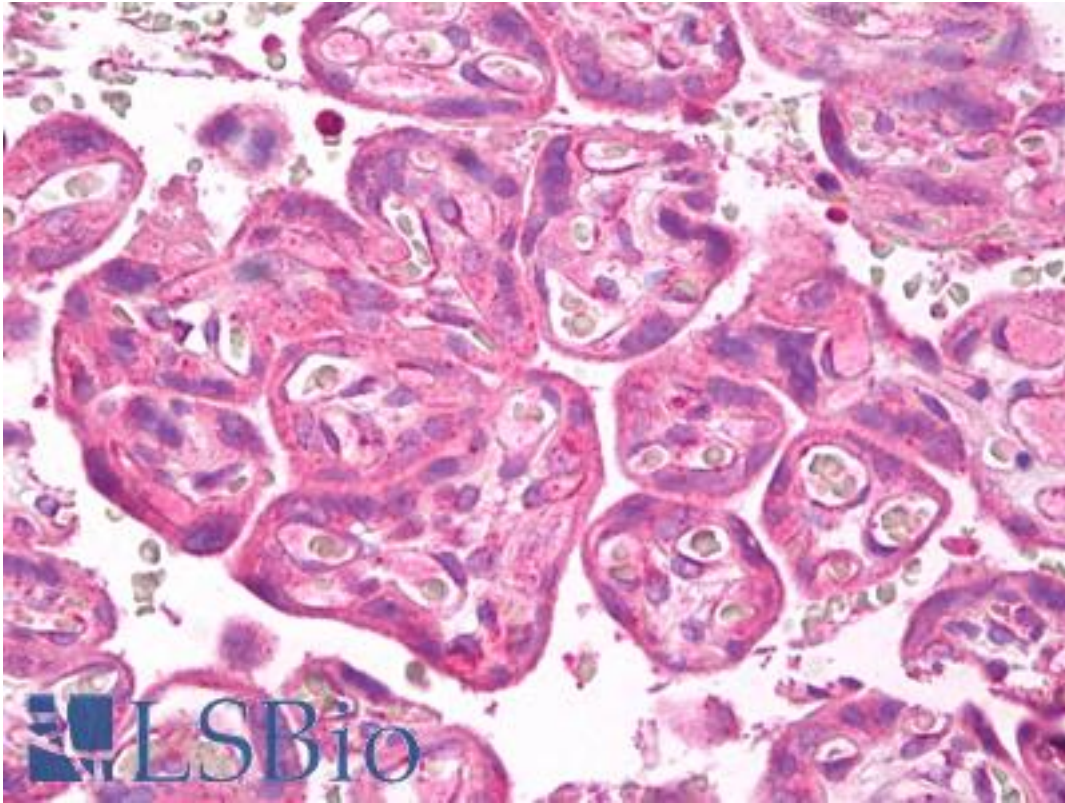


FLKT1 / FLT-1 / VEGFR1 Rabbit anti-Mouse Polyclonal (Internal) Antibody - LS-B7387 - LSBio	
<b>CatalogID:</b>	LS-B7387
<b>Validation:</b>	This antibody replaces catalog number LS-C92353. It has been validated for use in the following assays: IHC-P.
<b>Target:</b>	fms-related tyrosine kinase 1 (FLT1)
<b>Synonyms:</b>	FLT1 Antibody, FLT Antibody, FLT-1 Antibody, Fms-related tyrosine kinase 1 Antibody, SFlt1 Antibody, VEGF-r1 Antibody, VEG-R1 Antibody, Tyrosine-protein kinase FRT Antibody, VEGFR-1 Antibody, Fms-like tyrosine kinase 1 Antibody, FRT Antibody, VEGF receptor 1 Antibody, VEGF-r1 Antibody, VEGFR1 Antibody
<b>Family / Subfamily:</b>	Protein Kinase / VEGF Receptor
<b>Host</b>	FLT1 antibody was produced in Rabbit
<b>Clonality:</b>	Polyclonal
<b>Isotype:</b>	IgG
<b>Immunogen Species:</b>	FLKT1 / FLT-1 / VEGFR1 antibody was raised against Mouse
<b>Antigen Type:</b>	Synthetic peptide
<b>Immunogen:</b>	FLKT1 / FLT-1 / VEGFR1 antibody was raised against a synthetic peptide made to an internal region of the murine VEGFR1 protein sequence (between residues 800-900). There is 87% identity between the immunogen used for this production and the VEGFR-2 protein.
<b>Specificity:</b>	This antibody is specific for VEGFR-1 with significant crossreactivity with the VEGFR-2 protein. Species Crossreactivity: This antibody reacts with human protein. Other species have not yet been tested. The immunogen used for this antibody production has 100% homology with mouse, rat and human VEGFR-1 proteins.
<b>Epitope:</b>	Internal
<b>Reactivity:</b>	Mouse, Human
<b>Purification:</b>	Immunoaffinity purified
<b>Presentation:</b>	Tris-glycine, 150 mM sodium chloride, 0.05% sodium azide.
<b>Recommended Storage:</b>	Long term: -20°C; Short term: +4°C; Avoid freeze-thaw cycles.
<b>Usage Summary:</b>	Suitable for use in Western Blot. Positive control: HUVEC lysate.
<b>Uses:</b>	IHC - Paraffin (5 µg/ml), Western blot (Optimal dilution to be determined by the researcher)
<b>Size:</b>	50 µl
<b>Concentration:</b>	1 mg/ml

**Immunohistochemistry Image:**



Anti-VEGFR-1 antibody IHC of human placenta. Immunohistochemistry of formalin-fixed, paraffin-embedded tissue after heat-induced antigen retrieval. Antibody LS-B7387 concentration 5 ug/ml.

**Requested From:**

Japan

Laboratory Reagent For In Vitro Research Use Only

Not for resale without prior written consent from LifeSpan BioSciences, Inc.

Created on 9/24/2014

© 2014 LifeSpan BioSciences