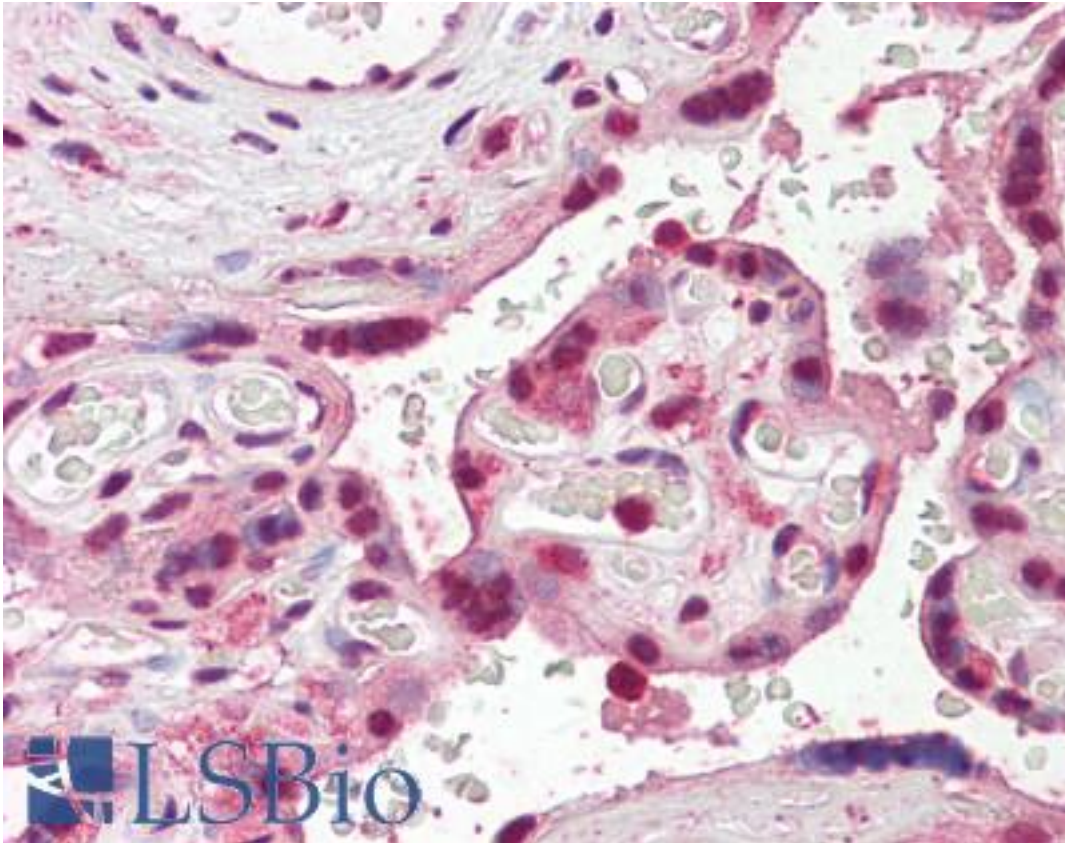


RAMA1 / SKA3 Goat anti-Human Polyclonal (Internal) Antibody - LS-B7373 - LSBio

CatalogID:	LS-B7373
Validation:	This antibody replaces catalog number LS-C112839. It has been validated for use in the following assays: IHC-P.
Target:	spindle and kinetochore associated complex subunit 3 (SKA3)
Synonyms:	SKA3 Antibody, C13orf3 Antibody, RAMA1 Antibody
Host	SKA3 antibody was produced in Goat
Clonality:	Polyclonal
Immunogen Species:	RAMA1 / SKA3 antibody was raised against Human
Antigen Type:	Synthetic peptide
Immunogen:	RAMA1 / SKA3 antibody was raised against synthetic peptide C-PLSKTNSSNDLE from an internal region of human SKA3 (NP_659498.3). Percent identity by BLAST analysis: Human, Gorilla, Gibbon, Dog (100%); Panda, Rabbit (92%); Monkey, Marmoset, Mouse, Toxoplasma (85%).
Specificity:	Human SKA3.
Epitope:	Internal
Reactivity:	Human, Gorilla, Gibbon, Dog
Predicted Reactivity:	Rabbit
Purification:	Immunoaffinity purified
Presentation:	Tris-buffered saline, pH 7.3, 0.5% BSA, 0.02% sodium azide
Recommended Storage:	Store at -20°C. Minimize freezing and thawing.
Usage Summary:	Peptide ELISA: antibody detection limit dilution 1:64000. Western blot: Preliminary experiments gave an approx 35kDa and 150kDa band in HeLa lysates after 2 ug/ml antibody staining. Please note that currently we cannot find an explanation in the literature for the bands we observe given the calculated size of 46.4kDa according to NP_659498.3. Both bands were successfully blocked by incubation with the immunizing peptide.
Uses:	IHC - Paraffin (3.75 µg/ml), ELISA (1:64000) (Optimal dilution to be determined by the researcher)
Size:	50 µg
Concentration:	0.5 mg/ml

Immunohistochemistry Image:



Anti-SKA3 antibody IHC of human placenta. Immunohistochemistry of formalin-fixed, paraffin-embedded tissue after heat-induced antigen retrieval. Antibody LS-B7373 concentration 3.75 ug/ml.

Requested From:

Japan

Laboratory Reagent For In Vitro Research Use Only

Not for resale without prior written consent from LifeSpan BioSciences, Inc.

Created on 9/24/2014

© 2014 LifeSpan BioSciences