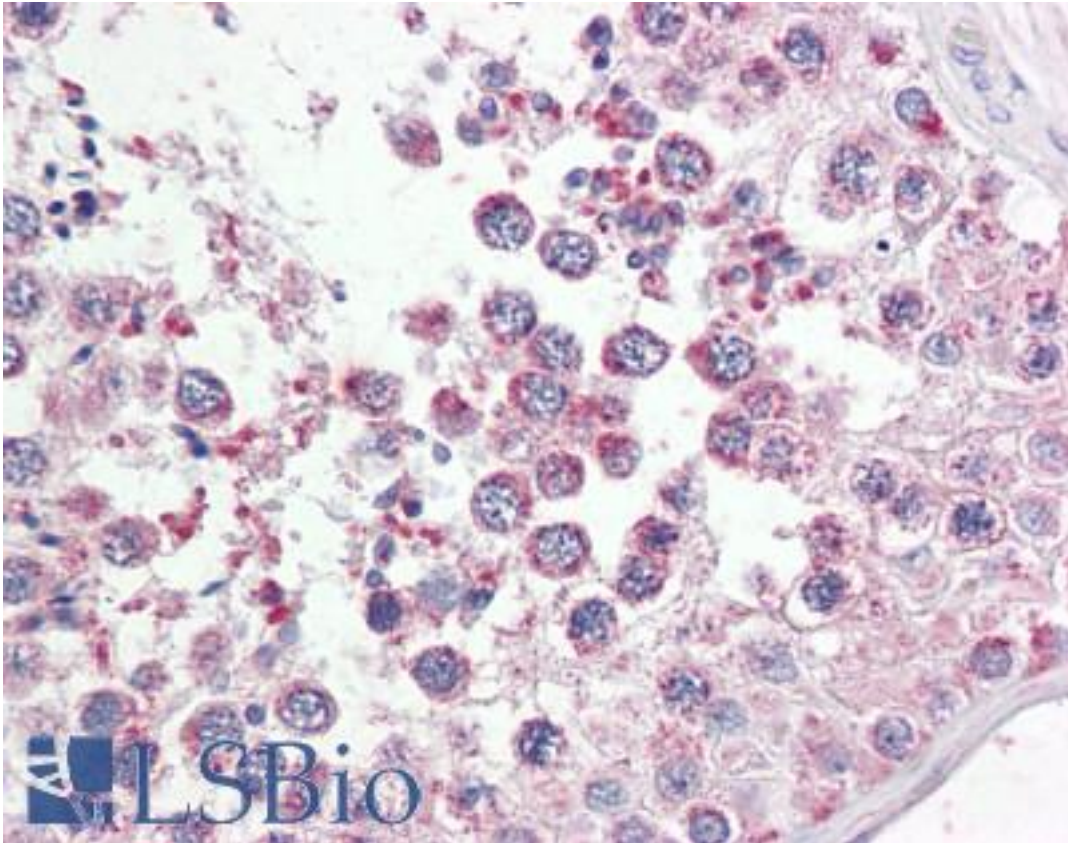


**UIMC1 / RAP80 Goat anti-Human Polyclonal (Internal) Antibody - LS-B7372 - LSBio**

|                              |  |
|------------------------------|--|
| <b>CatalogID:</b>            | LS-B7372   |
| <b>Validation:</b>           | This antibody replaces catalog number LS-C112668. It has been validated for use in the following assays: IHC-P.  |
| <b>Target:</b>               | ubiquitin interaction motif containing 1 (UIMC1)   |
| <b>Synonyms:</b>             | UIMC1 Antibody, BRCA1-A complex subunit RAP80 Antibody, Receptor associated protein 80 Antibody, RAP80 Antibody, RXRIP110 Antibody, X2HRIP110 Antibody, Receptor-associated protein 80 Antibody  |
| <b>Host</b>                  | UIMC1 antibody was produced in Goat  |
| <b>Clonality:</b>            | Polyclonal   |
| <b>Immunogen Species:</b>    | UIMC1 / RAP80 antibody was raised against Human  |
| <b>Antigen Type:</b>         | Synthetic peptide  |
| <b>Immunogen:</b>            | UIMC1 / RAP80 antibody was raised against synthetic peptide C-TRRQKEAKTKSDSG from an internal region of human UIMC1 / RAP80 (NP_057374.3). Percent identity by BLAST analysis: Human, Gorilla, Gibbon, Monkey, Marmoset (100%); Dog (93%); Rabbit, Pig (86%).  |
| <b>Specificity:</b>          | Human UIMC1 / RAP80.   |
| <b>Epitope:</b>              | Internal   |
| <b>Reactivity:</b>           | Human, Gorilla, Gibbon, Monkey   |
| <b>Predicted Reactivity:</b> | Dog  |
| <b>Purification:</b>         | Immunoaffinity purified  |
| <b>Presentation:</b>         | Tris-buffered saline, pH 7.3, 0.5% BSA, 0.02% sodium azide   |
| <b>Recommended Storage:</b>  | Store at -20°C. Minimize freezing and thawing.   |
| <b>Usage Summary:</b>        | Peptide ELISA: antibody detection limit dilution 1:32000. Western blot: Preliminary experiments gave an approx 60 kDa band in Human Heart and Spleen lysates and in lysates of cell lines A431, HeLa and HepG2 after 0.3 ug/ml antibody staining. Please note that currently we cannot find an explanation in the literature for the band we observe given the calculated size of 79.7 kDa according to NP_057374.3. The 60 kDa band was successfully blocked by incubation with the immunizing peptide. |
| <b>Uses:</b>                 | IHC - Paraffin (3.75 µg/ml), ELISA (1:32000) (Optimal dilution to be determined by the researcher)   |
| <b>Size:</b>                 | 50 µg  |
| <b>Concentration:</b>        | 0.5 mg/ml  |

**Immunohistochemistry Image:**



Anti-UIMC1 / RAP80 antibody IHC of human testis. Immunohistochemistry of formalin-fixed, paraffin-embedded tissue after heat-induced antigen retrieval. Antibody LS-B7372 concentration 3.75 ug/ml.

**Requested From:**

Japan

Laboratory Reagent For In Vitro Research Use Only

Not for resale without prior written consent from LifeSpan BioSciences, Inc.

Created on 9/24/2014

© 2014 LifeSpan BioSciences