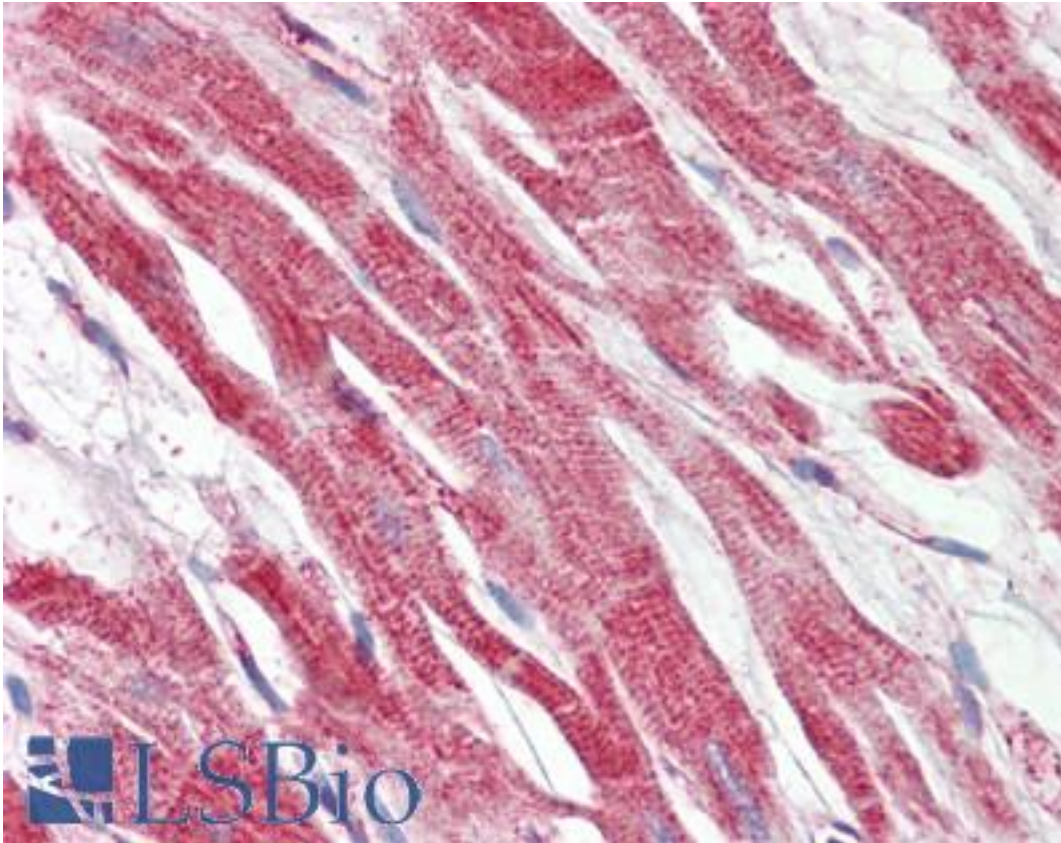


HAMP / Hepcidin Goat anti-Human Polyclonal (N-Terminus) Antibody - LS-B7371 - LSBio	
<b>CatalogID:</b>	LS-B7371
<b>Validation:</b>	This antibody replaces catalog number LS-C112698. It has been validated for use in the following assays: IHC-P.
<b>Target:</b>	hepcidin antimicrobial peptide (HAMP)
<b>Synonyms:</b>	HAMP Antibody, Hepcidin antimicrobial peptide Antibody, LEAP-1 Antibody, LEAP1 Antibody, HEPC Antibody, Hepcidin Antibody, HFE2B Antibody, PLTR Antibody, Putative liver tumor regressor Antibody
<b>Host</b>	HAMP antibody was produced in Goat
<b>Clonality:</b>	Polyclonal
<b>Immunogen Species:</b>	HAMP / Hepcidin antibody was raised against Human
<b>Antigen Type:</b>	Synthetic peptide
<b>Immunogen:</b>	HAMP / Hepcidin antibody was raised against synthetic peptide TSGSVFPQQTGQLAE-C from the N-terminus (near) of human HAMP / Hepcidin (NP_066998.1). Percent identity by BLAST analysis: Human, Chimpanzee, Gorilla, Orangutan, Gibbon, Monkey (100%); Marmoset, Panda (80%).
<b>Specificity:</b>	Human HAMP / Hepcidin.
<b>Epitope:</b>	N-Terminus
<b>Reactivity:</b>	Human, Chimpanzee, Gorilla, Orangutan, Gibbon, Monkey
<b>Purification:</b>	Immunoaffinity purified
<b>Presentation:</b>	Tris-buffered saline, pH 7.3, 0.5% BSA, 0.02% sodium azide
<b>Recommended Storage:</b>	Store at -20°C. Minimize freezing and thawing.
<b>Usage Summary:</b>	Peptide ELISA: antibody detection limit dilution 1:16000. Western blot: Preliminary experiments gave an approx 28kDa band in Human Liver lysates after 0.1 ug/ml antibody staining. Please note that currently we cannot find an explanation in the literature for the band we observe given the calculated size of 9.41kDa according to NP_066998.1. The 28kDa band was successfully blocked by incubation with the immunizing peptide.
<b>Uses:</b>	IHC - Paraffin (3.75 µg/ml), ELISA (1:16000) (Optimal dilution to be determined by the researcher)
<b>Size:</b>	50 µg
<b>Concentration:</b>	0.5 mg/ml

**Immunohistochemistry Image:**



Anti-HAMP / Hepcidin antibody IHC of human heart. Immunohistochemistry of formalin-fixed, paraffin-embedded tissue after heat-induced antigen retrieval. Antibody LS-B7371 concentration 3.75 ug/ml.

**Requested From:**

Japan

Laboratory Reagent For In Vitro Research Use Only

Not for resale without prior written consent from LifeSpan BioSciences, Inc.

Created on 9/24/2014

© 2014 LifeSpan BioSciences