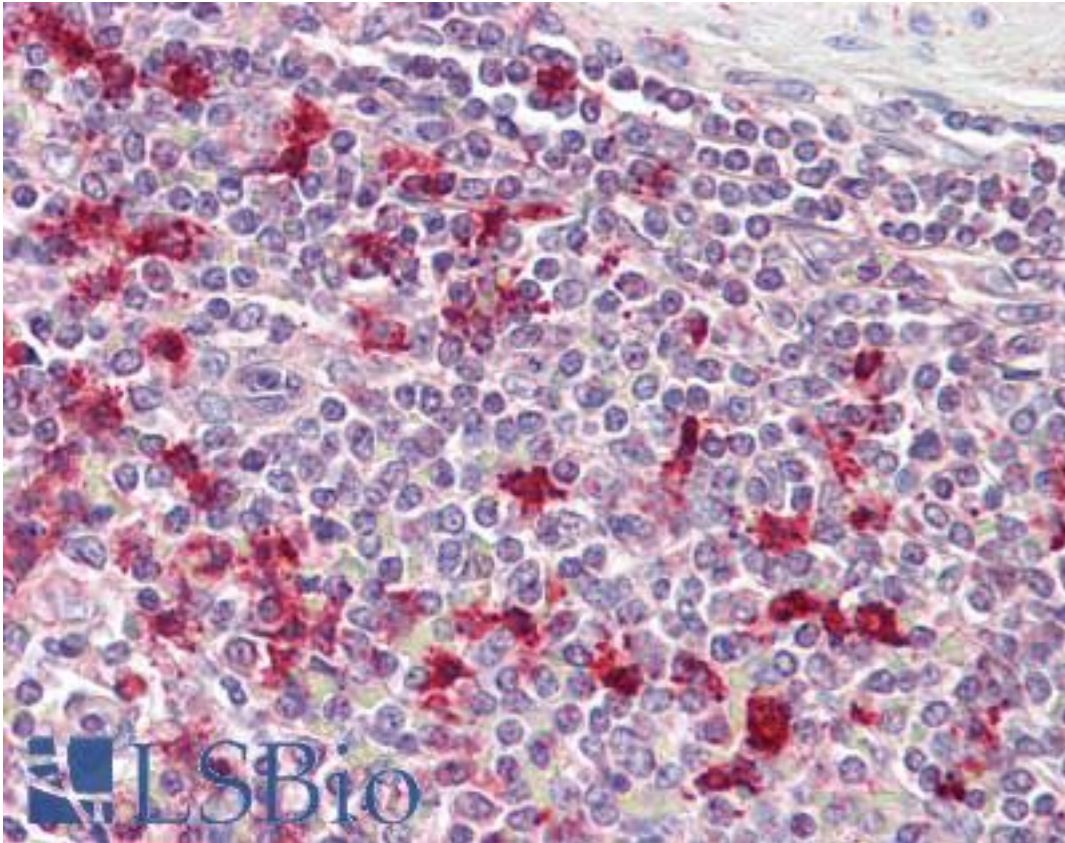


Ptma Goat anti-Human Polyclonal (C-Terminus) Antibody - LS-B7369 - LSBio	
<b>CatalogID:</b>	LS-B7369
<b>Validation:</b>	This antibody replaces catalog number LS-C112823. It has been validated for use in the following assays: IHC-P.
<b>Target:</b>	prothymosin, alpha (Ptma)
<b>Synonyms:</b>	Ptma Antibody, Gene sequence 28 Antibody, Prothymosin, alpha Antibody, TMSA Antibody, Prothymosin alpha Antibody, Prothymosin alpha protein Antibody, PTMA Antibody
<b>Host</b>	Ptma antibody was produced in Goat
<b>Clonality:</b>	Polyclonal
<b>Immunogen Species:</b>	Ptma antibody was raised against Human
<b>Antigen Type:</b>	Synthetic peptide
<b>Immunogen:</b>	Ptma antibody was raised against synthetic peptide C-DVDTKKQKTDEDD from the C-terminus of human PTMA (NP_001092755.1; NP_002814.3). Percent identity by BLAST analysis: Human, Gorilla, Orangutan, Monkey, Marmoset, Hamster, Elephant, Panda, Bovine, Horse, Platypus (100%); Gibbon, Mouse, Rat, Xenopus (92%).
<b>Specificity:</b>	Human PTMA. This antibody is expected to recognize both reported isoforms (NP_001092755.1; NP_002814.3).
<b>Epitope:</b>	C-Terminus
<b>Reactivity:</b>	Human, Gorilla, Orangutan, Monkey, Bovine, Hamster, Horse
<b>Predicted Reactivity:</b>	Gibbon, Mouse, Rat, Xenopus
<b>Purification:</b>	Immunoaffinity purified
<b>Presentation:</b>	Tris-buffered saline, pH 7.3, 0.5% BSA, 0.02% sodium azide
<b>Recommended Storage:</b>	Store at -20°C. Minimize freezing and thawing.
<b>Usage Summary:</b>	Peptide ELISA: antibody detection limit dilution 1:1000. Western blot: Preliminary experiments gave an approx. 38kDa band in lysates of cell line A431 after 0.2 ug/ml antibody staining. Please note that currently we cannot find an explanation in the literature for the band we observe given the calculated size of 12.2kDa according to NP_001092755.1 and of 12.1kDa according to NP_002814.3. The 38kDa band was successfully blocked by incubation with the immunizing peptide.
<b>Uses:</b>	IHC - Paraffin (3.75 µg/ml), ELISA (1:1000) (Optimal dilution to be determined by the researcher)
<b>Size:</b>	50 µg
<b>Concentration:</b>	0.5 mg/ml

**Immunohistochemistry Image:**



Anti-PTMA antibody IHC of human spleen. Immunohistochemistry of formalin-fixed, paraffin-embedded tissue after heat-induced antigen retrieval. Antibody LS-B7369 concentration 3.75 ug/ml.

**Requested From:**

Japan

Laboratory Reagent For In Vitro Research Use Only

Not for resale without prior written consent from LifeSpan BioSciences, Inc.

Created on 9/24/2014

© 2014 LifeSpan BioSciences