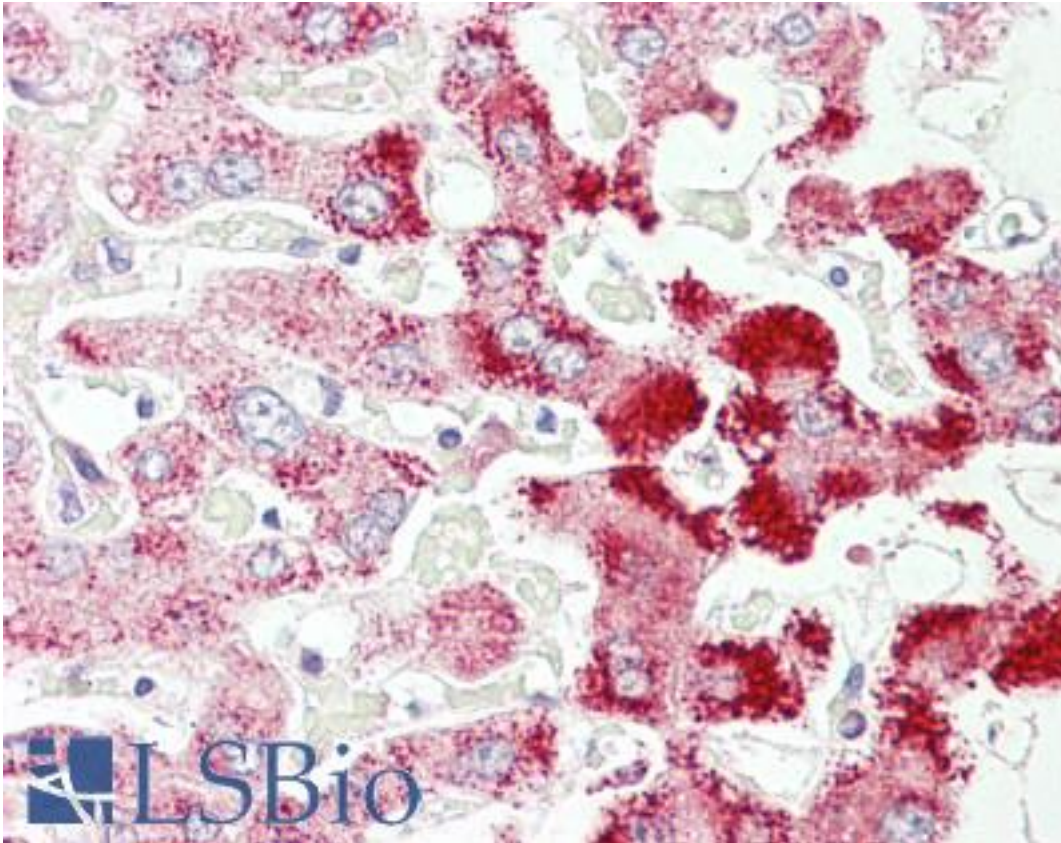


SCP2 / SCPX Goat anti-Human Polyclonal (Internal) Antibody - LS-B7367 - LSBio

CatalogID:	LS-B7367
Validation:	This antibody replaces catalog number LS-C87280. It has been validated for use in the following assays: IHC-P.
Target:	sterol carrier protein 2 (SCP2)
Synonyms:	SCP2 Antibody, NLTP Antibody, NSL-TP Antibody, SCP-CHI Antibody, SCP-X Antibody, Sterol carrier protein 2 Antibody, Sterol carrier protein X Antibody, SCP-2 Antibody, SCPX Antibody
Host	SCP2 antibody was produced in Goat
Clonality:	Polyclonal
Immunogen Species:	SCP2 / SCPX antibody was raised against Human
Antigen Type:	Synthetic peptide
Immunogen:	SCP2 / SCPX antibody was raised against synthetic peptide C-KNHHKHSVNNPYSQ from an internal region of human SCP2 (NP_001007099.1; NP_002970.2; NP_001180528.1; NP_001180529.1; NP_001180546.1). Percent identity by BLAST analysis: Human, Gorilla, Orangutan, Gibbon, Monkey, Marmoset, Rat, Hamster, Elephant, Bat, Bovine, Horse, Rabbit, Opossum, Drosophila, Ant, Beetle (100%); M. tuberculosis (92%).
Specificity:	Human SCP2. This antibody is expected to recognize isoform 1, 2, 6, 7 and 8 (NP_002970.2; NP_001007099.1; NP_001180529.1; NP_001180528.1; NP_001180546.1 respectively),
Epitope:	Internal
Reactivity:	Human, Gorilla, Orangutan, Gibbon, Monkey, Rat, Bat, Bovine, Hamster, Horse, Rabbit, Drosophila
Purification:	Immunoaffinity purified
Presentation:	Tris-buffered saline, pH 7.3, 0.5% BSA, 0.02% sodium azide
Recommended Storage:	Store at -20°C. Minimize freezing and thawing.
Usage Summary:	Peptide ELISA: antibody detection limit dilution 1:32000. Western Blot: Preliminary experiments gave an approx 28kD band in Human Adipose tissue lysates after 0.3 ug/ml antibody staining. Please note that currently we cannot find an explanation in the literature for the band we observe given the calculated size of 59.0kD according to NP_001007099.1 and of 6.7kD according to NP_002970.2. The 28kD band was successfully blocked by incubation with the immunizing peptide. We would appreciate any feedback from people in the field - have any results been reported with other antibodies / lysates? Have any further splice variants / modified forms been reported?
Uses:	IHC - Paraffin (3.75 µg/ml), ELISA (1:32000) (Optimal dilution to be determined by the researcher)
Size:	50 µg
Concentration:	0.5 mg/ml

Immunohistochemistry Image:



Anti-SCP2 antibody IHC of human liver. Immunohistochemistry of formalin-fixed, paraffin-embedded tissue after heat-induced antigen retrieval. Antibody LS-B7367 concentration 3.75 ug/ml.

Requested From:

Japan

Laboratory Reagent For In Vitro Research Use Only

Not for resale without prior written consent from LifeSpan BioSciences, Inc.

Created on 9/24/2014

© 2014 LifeSpan BioSciences