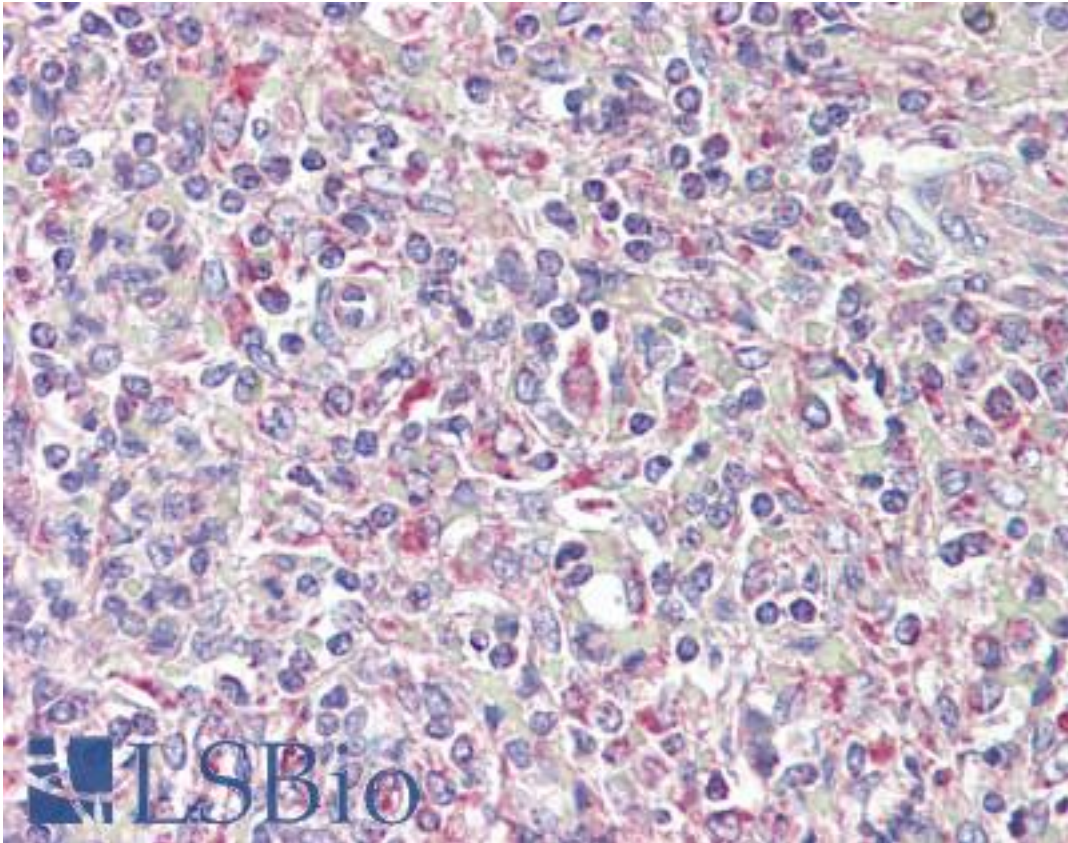


**TRIB1 Goat anti-Human Polyclonal (C-Terminus) Antibody - LS-B7366 - LSBio**

<b>CatalogID:</b>	LS-B7366
<b>Validation:</b>	This antibody replaces catalog number LS-C87254. It has been validated for use in the following assays: IHC-P.
<b>Target:</b>	tribbles pseudokinase 1 (TRIB1)
<b>Synonyms:</b>	TRIB1 Antibody, GIG-2 Antibody, TRB1 Antibody, Tribbles-like protein 1 Antibody, TRB-1 Antibody, Tribbles homolog 1 Antibody, C8FW Antibody, GIG2 Antibody, SKIP1 Antibody
<b>Host</b>	TRIB1 antibody was produced in Goat
<b>Clonality:</b>	Polyclonal
<b>Immunogen Species:</b>	TRIB1 antibody was raised against Human
<b>Antigen Type:</b>	Synthetic peptide
<b>Immunogen:</b>	TRIB1 antibody was raised against synthetic peptide C-TSDQIVPEYQEDSD from the C-terminus of human TRIB1 (NP_079471.1 ). Percent identity by BLAST analysis: Human, Gorilla, Gibbon, Monkey, Marmoset, Mouse, Bovine, Horse (100%); Elephant, Panda, Dog, Bat, Opossum (93%); Rat, Platypus (86%).
<b>Specificity:</b>	Human TRIB1.
<b>Epitope:</b>	C-Terminus
<b>Reactivity:</b>	Human, Gorilla, Gibbon, Monkey, Mouse, Bovine, Horse
<b>Predicted Reactivity:</b>	Bat, Dog
<b>Purification:</b>	Immunoaffinity purified
<b>Presentation:</b>	Tris-buffered saline, pH 7.3, 0.5% BSA, 0.02% sodium azide
<b>Recommended Storage:</b>	Store at -20°C. Minimize freezing and thawing.
<b>Usage Summary:</b>	Peptide ELISA: antibody detection limit dilution 1:8000. Western Blot: Preliminary experiments gave an approx 35kD band in Human Lymph Node and Peripheral Blood Mononucleocyte lysates after 0.3 ug/ml antibody staining. Please note that currently we cannot find an explanation in the literature for the band we observe given the calculated size of 41.0kD according to NP_079471.1. The 35kD band was successfully blocked by incubation with the immunizing peptide. We would appreciate any feedback from people in the field - have any results been reported with other antibodies / lysates? Have any further splice variants / modified forms been reported?
<b>Uses:</b>	IHC - Paraffin (3.75 µg/ml), ELISA (1:8000) (Optimal dilution to be determined by the researcher)
<b>Size:</b>	50 µg
<b>Concentration:</b>	0.5 mg/ml

**Immunohistochemistry Image:**



Anti-TRIB1 antibody IHC of human spleen. Immunohistochemistry of formalin-fixed, paraffin-embedded tissue after heat-induced antigen retrieval. Antibody LS-B7366 concentration 3.75 ug/ml.

**Requested From:**

Japan

Laboratory Reagent For In Vitro Research Use Only

Not for resale without prior written consent from LifeSpan BioSciences, Inc.

Created on 9/24/2014

© 2014 LifeSpan BioSciences