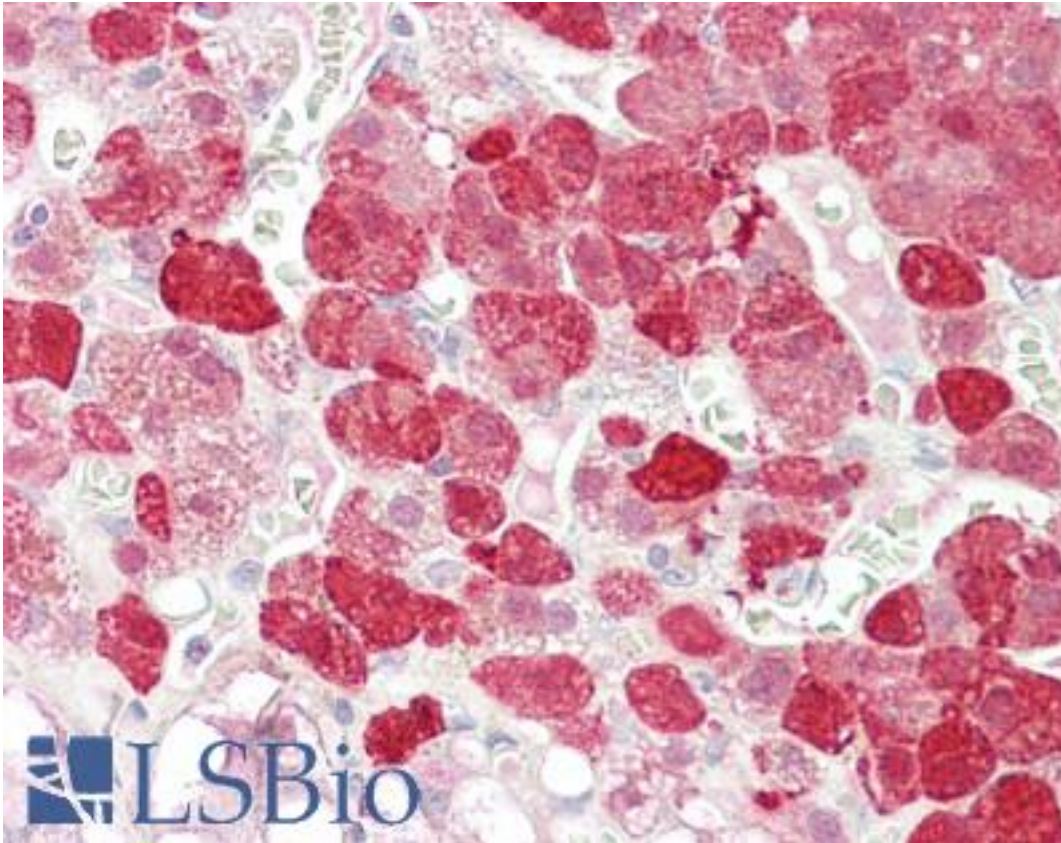


EPB41L4B Goat anti-Human Polyclonal (Internal) Antibody - LS-B7360 - LSBio	
CatalogID:	LS-B7360
Validation:	This antibody replaces catalog number LS-C61733. It has been validated for use in the following assays: IHC-P.
Target:	erythrocyte membrane protein band 4.1 like 4B (EPB41L4B)
Synonyms:	EPB41L4B Antibody, CG1 Antibody, FERM-containing protein CG1 Antibody, EHM2 Antibody, Protein EHM2 Antibody, Band 4.1-like protein 4B Antibody
Host	EPB41L4B antibody was produced in Goat
Clonality:	Polyclonal
Immunogen Species:	EPB41L4B antibody was raised against Human
Antigen Type:	Synthetic peptide
Immunogen:	EPB41L4B antibody was raised against synthetic peptide C-HNYQPQYHPNIHPSQ from an internal region of human EPB41L4B (NP_060894.2; NP_061987.3). Percent identity by BLAST analysis: Human, Gorilla, Gibbon, Monkey, Marmoset, Panda, Dog, Bat, Rabbit (100%); Hamster, Elephant, Turkey, Chicken (93%); Mouse, Rat, Bovine, Horse, Opossum (87%); Pig (80%).
Specificity:	Human EPB41L4B. This antibody is expected to recognise both reported isoforms (NP_060894.2; NP_061987.3).
Epitope:	Internal
Reactivity:	Human, Gorilla, Gibbon, Monkey, Bat, Dog, Rabbit
Predicted Reactivity:	Hamster, Chicken
Purification:	Immunoaffinity purified
Presentation:	Tris-buffered saline, pH 7.3, 0.5% BSA, 0.02% sodium azide
Recommended Storage:	Store at -20°C. Minimize freezing and thawing.
Uses:	IHC - Paraffin (3.75 µg/ml), ELISA (1:64000) (Optimal dilution to be determined by the researcher)
Size:	50 µg
Concentration:	0.5 mg/ml

Immunohistochemistry Image:



Anti-EPB41L4B antibody IHC of human adrenal. Immunohistochemistry of formalin-fixed, paraffin-embedded tissue after heat-induced antigen retrieval. Antibody LS-B7360 concentration 3.75 ug/ml.

Requested From:

Japan

Laboratory Reagent For In Vitro Research Use Only

Not for resale without prior written consent from LifeSpan BioSciences, Inc.

Created on 9/24/2014

© 2014 LifeSpan BioSciences