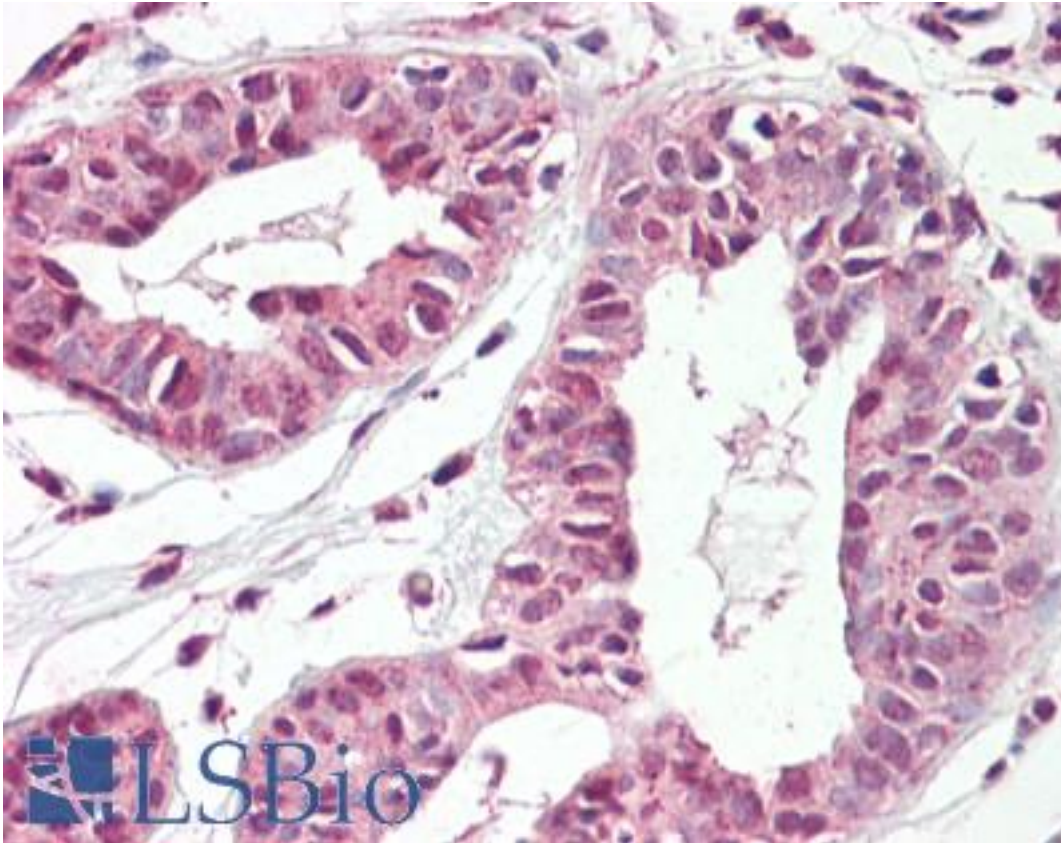


TREX2 Goat anti-Human Polyclonal (Internal) Antibody - LS-B7359 - LSBio

CatalogID:	LS-B7359
Validation:	This antibody replaces catalog number LS-C112744. It has been validated for use in the following assays: IHC-P.
Target:	three prime repair exonuclease 2 (TREX2)
Synonyms:	TREX2 Antibody, 3-5 exonuclease TREX2 Antibody
Host	TREX2 antibody was produced in Goat
Clonality:	Polyclonal
Immunogen Species:	TREX2 antibody was raised against Human
Antigen Type:	Synthetic peptide
Immunogen:	TREX2 antibody was raised against synthetic peptide C-HRSSLENPEHDES from an internal region of human TREX2 (NP_542432.2). Percent identity with other species by BLAST analysis: Human (100%), Marmoset (92%), Gibbon (85%), Monkey (85%), Mouse (85%), Rat (85%), Hamster (85%), Panda (85%), Dog (85%), Horse (85%).
Specificity:	Human TREX2.
Epitope:	Internal
Reactivity:	Human
Predicted Reactivity:	Monkey
Purification:	Immunoaffinity purified
Presentation:	Tris-buffered saline, pH 7.3, 0.5% BSA, 0.02% sodium azide
Recommended Storage:	Store at -20°C. Minimize freezing and thawing.
Usage Summary:	Peptide ELISA: antibody detection limit dilution 1:128000. Western blot: Preliminary experiments gave an approx 18kDa band in lysates of Jurkat, MOLT4 and U937 after 0.5 ug/ml antibody staining. Please note that currently we cannot find an explanation in the literature for the band we observe given the calculated size of 25.9kDa according to NP_542432.2. The 18kDa band was successfully blocked by incubation with the immunizing peptide.
Uses:	IHC - Paraffin (3.75 µg/ml), ELISA (1:128000) (Optimal dilution to be determined by the researcher)
Size:	50 µg
Concentration:	0.5 mg/ml

Immunohistochemistry Image:



Anti-TREX2 antibody IHC of human breast. Immunohistochemistry of formalin-fixed, paraffin-embedded tissue after heat-induced antigen retrieval. Antibody LS-B7359 concentration 3.75 ug/ml.

Requested From:

Japan

Laboratory Reagent For In Vitro Research Use Only

Not for resale without prior written consent from LifeSpan BioSciences, Inc.

Created on 9/24/2014

© 2014 LifeSpan BioSciences