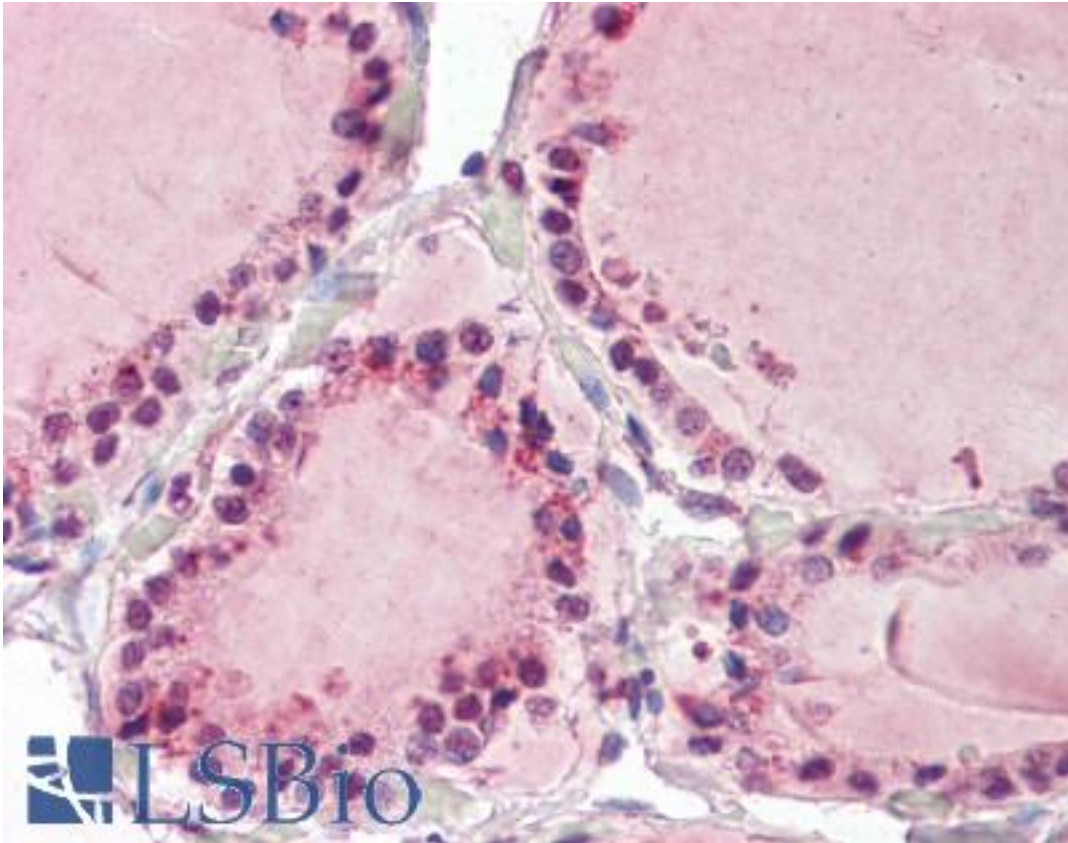


NAP1 / TAB3 Goat anti-Human Polyclonal (aa59-69) Antibody - LS-B7358 - LSBio	
CatalogID:	LS-B7358
Validation:	This antibody replaces catalog number LS-C55089. It has been validated for use in the following assays: IHC-P.
Target:	TGF-beta activated kinase 1/MAP3K7 binding protein 3 (TAB3)
Synonyms:	TAB3 Antibody, MAP3K7IP3 Antibody, NAP1 Antibody, NFkB activating protein 1 Antibody, TAK1-binding protein 3 Antibody, TAB-3 Antibody
Host	TAB3 antibody was produced in Goat
Clonality:	Polyclonal
Immunogen Species:	NAP1 / TAB3 antibody was raised against Human
Antigen Type:	Synthetic peptide
Immunogen:	NAP1 / TAB3 antibody was raised against synthetic peptide C-HSPDDNRMNRN from an internal region of human TAB3 / MAP3K7IP3 (NP_690000.2). Percent identity by BLAST analysis: Human, Gorilla, Gibbon, Monkey, Marmoset, Elephant, Panda, Dog, Bat, Horse, Rabbit, Pig (100%); Mouse, Hamster, Bovine, Opossum, Turkey, Chicken (91%); Lizard (82%).
Specificity:	Human TAB3 / MAP3K7IP3.
Epitope:	aa59-69
Reactivity:	Human, Gorilla, Gibbon, Monkey, Bat, Dog, Horse, Pig, Rabbit
Predicted Reactivity:	Mouse, Bovine, Hamster, Chicken
Purification:	Immunoaffinity purified
Presentation:	Tris-buffered saline, pH 7.3, 0.5% BSA, 0.02% sodium azide
Recommended Storage:	Store at -20°C. Minimize freezing and thawing.
Uses:	IHC - Paraffin (3.75 µg/ml), ELISA (1:32000) (Optimal dilution to be determined by the researcher)
Size:	50 µg
Concentration:	0.5 mg/ml

Immunohistochemistry Image:



Anti-TAB3 / MAP3K7IP3 antibody IHC of human thyroid. Immunohistochemistry of formalin-fixed, paraffin-embedded tissue after heat-induced antigen retrieval. Antibody LS-B7358 concentration 3.75 ug/ml.

Requested From:

Japan

Laboratory Reagent For In Vitro Research Use Only

Not for resale without prior written consent from LifeSpan BioSciences, Inc.

Created on 9/24/2014

© 2014 LifeSpan BioSciences