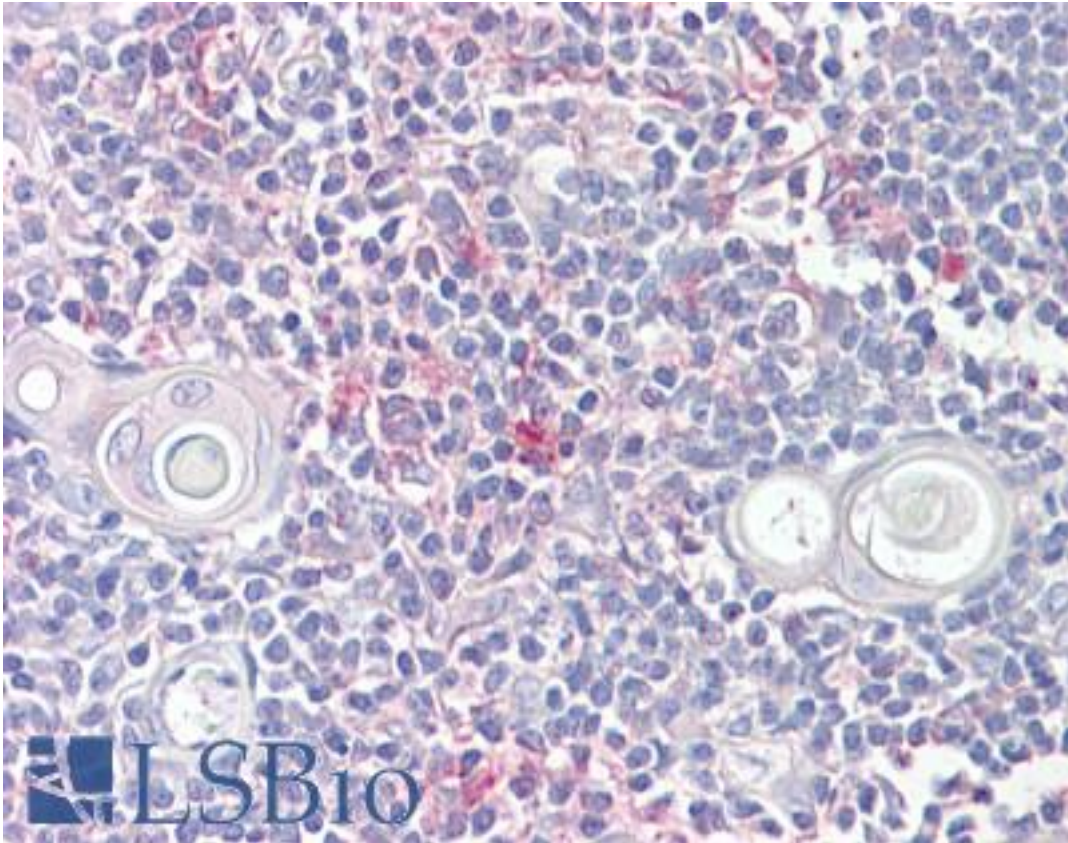


LITAF Goat anti-Human Polyclonal (Internal) Antibody - LS-B7357 - LSBio

CatalogID:	LS-B7357
Validation:	This antibody replaces catalog number LS-C61760. It has been validated for use in the following assays: IHC-P.
Target:	lipopolysaccharide-induced TNF factor (LITAF)
Synonyms:	LITAF Antibody, PIG7 Antibody, TP53I7 Antibody, p53-induced gene 7 protein Antibody, SIMPLE Antibody, CMT1C Antibody, LPS-induced TNF-alpha factor Antibody
Host	LITAF antibody was produced in Goat
Clonality:	Polyclonal
Immunogen Species:	LITAF antibody was raised against Human
Antigen Type:	Synthetic peptide
Immunogen:	LITAF antibody was raised against synthetic peptide C-PDGKGMNPPSYTQ from an internal region of human LITAF (NP_004853.2; NP_001129945.1). Percent identity by BLAST analysis: Human, Gorilla, Mouse, Rat, Hamster (100%); Gibbon, Monkey, Marmoset, Elephant, Panda, Bat, Dog, Bovine, Rabbit, Horse, Pig (93%); Opossum (86%).
Specificity:	Human LITAF. This antibody is expected to crossreact with both reported isoforms (NP_004853.2; NP_001129945.1).
Epitope:	Internal
Reactivity:	Human, Gorilla, Mouse, Rat, Hamster
Predicted Reactivity:	Gibbon, Monkey, Bat, Bovine, Dog, Horse, Pig, Rabbit
Purification:	Immunoaffinity purified
Presentation:	Tris-buffered saline, pH 7.3, 0.5% BSA, 0.02% sodium azide
Recommended Storage:	Store at -20°C. Minimize freezing and thawing.
Uses:	IHC - Paraffin (6.5 µg/ml), ELISA (1:8000) (Optimal dilution to be determined by the researcher)
Size:	50 µg
Concentration:	0.5 mg/ml

Immunohistochemistry Image:



Anti-LITAF antibody IHC of human thymus. Immunohistochemistry of formalin-fixed, paraffin-embedded tissue after heat-induced antigen retrieval. Antibody LS-B7357 concentration 6.5 ug/ml.

Requested From:

Japan

Laboratory Reagent For In Vitro Research Use Only

Not for resale without prior written consent from LifeSpan BioSciences, Inc.

Created on 9/24/2014

© 2014 LifeSpan BioSciences