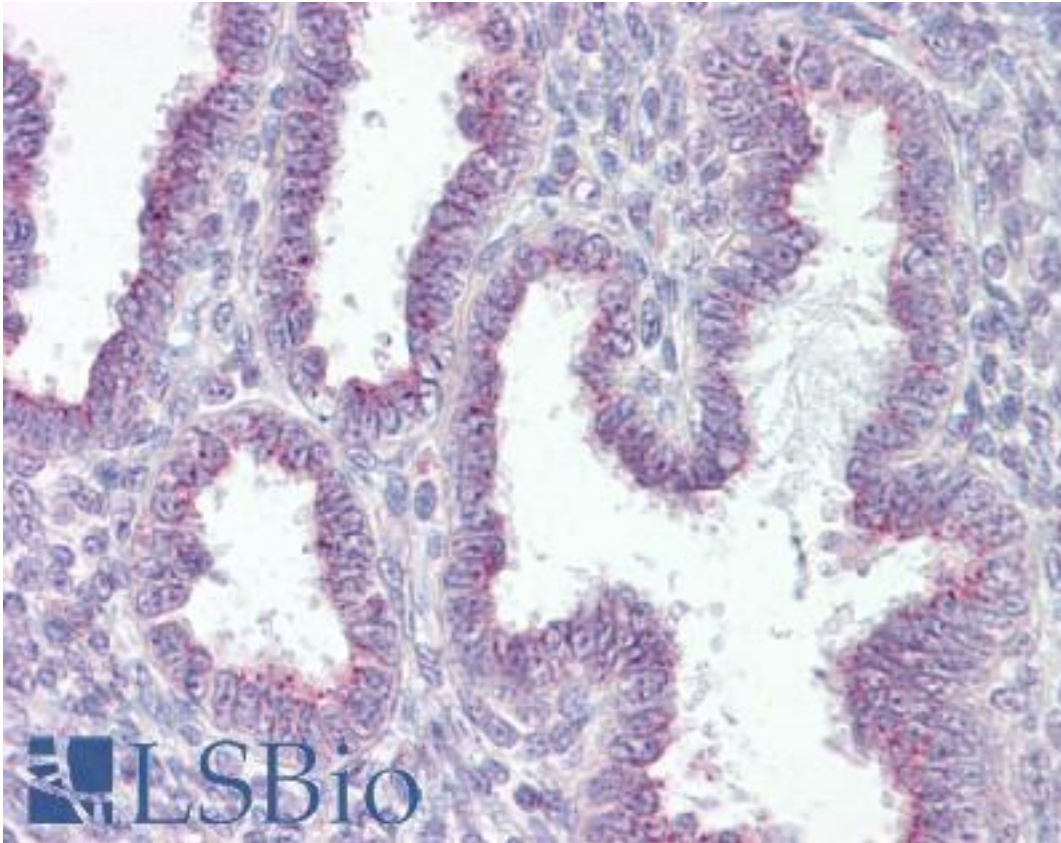


**RER1 Goat anti-Human Polyclonal (C-Terminus) Antibody - LS-B7355 - LSBio**

<b>CatalogID:</b>	LS-B7355
<b>Validation:</b>	This antibody replaces catalog number LS-C61786. It has been validated for use in the following assays: IHC-P.
<b>Target:</b>	retention in endoplasmic reticulum sorting receptor 1 (RER1)
<b>Synonyms:</b>	RER1 Antibody, Protein RER1 Antibody, RP4-740C4.2 Antibody
<b>Host</b>	RER1 antibody was produced in Goat
<b>Clonality:</b>	Polyclonal
<b>Immunogen Species:</b>	RER1 antibody was raised against Human
<b>Antigen Type:</b>	Synthetic peptide
<b>Immunogen:</b>	RER1 antibody was raised against synthetic peptide C-HGKRRYRGKEDAGK from the C-terminus of human RER1 (NP_008964.3). Percent identity by BLAST analysis: Human, Gorilla, Orangutan, Gibbon, Monkey (100%); Marmoset (93%); Mouse, Rat, Hamster, Panda, Bat, Bovine, Platypus, Catfish, Salmon (86%).
<b>Specificity:</b>	Human RER1.
<b>Epitope:</b>	C-Terminus
<b>Reactivity:</b>	Human, Gorilla, Orangutan, Gibbon
<b>Predicted Reactivity:</b>	Monkey
<b>Purification:</b>	Immunoaffinity purified
<b>Presentation:</b>	Tris-buffered saline, pH 7.3, 0.5% BSA, 0.02% sodium azide
<b>Recommended Storage:</b>	Store at -20°C. Minimize freezing and thawing.
<b>Uses:</b>	IHC - Paraffin (3.75 µg/ml), ELISA (1:128000) (Optimal dilution to be determined by the researcher)
<b>Size:</b>	50 µg
<b>Concentration:</b>	0.5 mg/ml

**Immunohistochemistry Image:**



Anti-RER1 antibody IHC of human uterus. Immunohistochemistry of formalin-fixed, paraffin-embedded tissue after heat-induced antigen retrieval. Antibody LS-B7355 concentration 3.75 ug/ml.

**Requested From:**

Japan

Laboratory Reagent For In Vitro Research Use Only

Not for resale without prior written consent from LifeSpan BioSciences, Inc.

Created on 9/24/2014

© 2014 LifeSpan BioSciences